

2015

# IASR/AFSP

## International Summit on Suicide Research

*Preventing Suicide:  
Progress Through Research*

October 11–14, 2015  
The Waldorf Astoria ✨ New York City

### PROGRAM BOOK

Jointly Provided By:



International Academy  
of Suicide Research



AMERICAN FOUNDATION FOR  
Suicide Prevention

[www.SuicideResearchSummit.org](http://www.SuicideResearchSummit.org)



October 11, 2015

Dear Colleagues,

It is our great pleasure to welcome you to *2015 International Summit on Suicide Research* sponsored by the International Academy of Suicide Research and the American Foundation for Suicide Prevention to be held at the beautiful Waldorf Astoria in New York City. We hope that this meeting will continue to provide a forum for all investigators working in suicide research to present their latest data, exchange new ideas, and discuss ongoing developments. Further, we hope to bring together investigators working in diverse areas of research, from molecular geneticists to epidemiologists and interventions researchers, to generate new interdisciplinary approaches to the problem of suicide and suicidal behavior. It is our hope that each participant will come away from this meeting energized with an appreciation of the breadth of the work being conducted in our field. Importantly, with your help, we hope to mentor, support and encourage young investigators who are the future of our research endeavors.

This year's meeting includes plenaries, oral presentations, and posters covering a breadth of topics and with participation from over 30 countries.

We are particularly pleased to present to you three poster sessions which will take place on Monday and Tuesday at 1:00 PM and on Wednesday at 10:45 AM. We believe that these events should be both informative and entertaining, and we encourage all meeting participants to attend and interact with the poster presenters, as well as meet with other colleagues.

This conference would not be taking place without the efforts of many individuals. In particular, the Organizing Committee would like to thank Kelly Phy and Sarah Timm of Parthenon Management Group, as well as our Scientific Advisory Committee for their continual, invaluable work in all aspects of the planning and preparation of the meeting.

We hope that you will also have some time to enjoy our exciting city. If there is anything we can do to make your visit a more enjoyable one, please let us know.

Sincerely,



**Maria Oquendo, M.D.**  
**Co-Chair**



**Barbara Stanley, PhD.**  
**Co-Chair**

# TABLE OF CONTENTS

Welcome .....	Inside Front Cover
About the Summit .....	3
About the Organizers .....	4
2015 Award Recipients .....	5
IASR Membership Information .....	7
Mentorship .....	8
Acknowledgements .....	9
Meeting Announcements .....	10
Featured Speakers .....	11
Continuing Education Information .....	13
Conference Map .....	15
Funding and Sponsor Acknowledgements .....	16
Sunday, October 11, 2015 .....	17
Monday, October 12, 2015 .....	27
Tuesday, October 13, 2015 .....	39
Wednesday, October 14, 2015 .....	51
Posters .....	61
Author Index .....	77



### *Preventing Suicide: Progress Through Research*

This 2015 International Suicide Research Summit will bring together suicide researchers studying topics ranging from neurobiology and genetics to prevention and intervention. All suicide researchers and those interested in learning about the most cutting edge evidence are invited to attend and take advantage of this excellent opportunity to network and interact. In addition to plenary sessions with preeminent suicide researchers and symposia, the meeting will include a mentoring program, poster sessions, and workshops addressing methodological issues particular to suicide research, such as assessment of suicidal behavior, strategies for research on low base rate outcomes, use of proxy measures, and maintaining the delicate balance between ethical and methodological concerns.

Conference Co-Chairs: Maria Oquendo, M.D. and Barbara Stanley, Ph.D., Department of Psychiatry, Columbia University, New York State Psychiatric Institute

The learning objectives for the Summit:

1. Participants will be able to articulate the key findings in the development of preventive/intervention strategies and how to incorporate translational research strategies into intervention studies.
2. Participants will be able to describe methodological and ethical challenges in research design for studies where the outcome of interest is suicidal behavior.
3. Participants will be able to enumerate the most recent neurobiological, genetic, psychological and social evidence related to suicidal behavior.

## ABOUT THE ORGANIZERS

### International Academy of Suicide Research



The International Academy for Suicide Research is an organization that promotes high standards of research and scholarship in the field of suicidal behaviour by fostering communication and co-operation among scholars engaged in such research.

The Academy's official publication is the Archives of Suicide Research. This is a peer-reviewed journal published by Taylor & Francis.

The Academy holds annual scientific and business meetings. These have been held in conjunction with conferences such as the International Association for Suicide Prevention, the European Symposium on Suicide and Suicidal Behaviour, and the American Association of Suicidology.

For more information, please visit: <http://www.suicide-research.org/>.

### American Foundation for Suicide Prevention



Founded in 1987 by a number of leading experts on suicide, business and community leaders and survivors of suicide, the American Foundation for Suicide Prevention (AFSP) is the leading national, not-for-profit organization exclusively dedicated to understanding and preventing suicide through research, education and advocacy, and to reaching out to people with mental disorders and those impacted by suicide.

To fully achieve its mission, the AFSP engages in the following Five Core Strategies:

- Fund scientific research
- Offer educational programs for professionals
- Educate the public about mood disorders and suicide prevention
- Promote policies and legislation that impact suicide and prevention
- Provide programs and resources for survivors of suicide loss and people at risk, and involve them in the work of the Foundation

For more information: <https://www.afsp.org/>.

## AWARDS

**The Morselli Medal** is awarded every two years by the International Academy for Suicide Research (IASR) to an individual who has made an outstanding and important lifetime contribution to the study of suicidal behaviour and/or suicide prevention. This is the Academy's most distinguished award and is intended to be a "lifetime achievement" award. The Award is named in honour of Enrico Morselli, late of the University of Genoa School of Medicine who is regarded as being the first scientific, statistically informed epidemiologist in suicidology.

### 2015 Winners of the Morselli Medal



**Mark Williams** is Emeritus Professor of Clinical Psychology at the University of Oxford, having been Wellcome Principal Research Fellow at Oxford from 2003 to 2012, and at Bangor University between 1991 and 2002. He collaborated with John Teasdale and Zindel Segal in developing Mindfulness-based Cognitive Therapy (MBCT) to prevent relapse and recurrence in major depression, and co-authored, with them, *Mindfulness-based Cognitive Therapy for Depression* (2013), *The Mindful Way Workbook* (2014) and with them and Jon Kabat-Zinn, *The Mindful Way Through Depression* (2007). He is a Fellow of the British Psychological Society, the Academy of Medical Sciences and the British Academy. Now retired, he continues to live near Oxford, to teach mindfulness to teachers-in-training across the world, and to explore, with colleagues, how mindfulness and compassion might most authentically be cultivated in evidence-based public policy.



**David Brent** is a child and adolescent psychiatrist with additional training in epidemiology who studies the risk factors, etiology, treatment, and prevention of adolescent suicidal behavior. He was involved in some of the first psychological autopsy studies of adolescent suicide, which identified depression and bipolar disorder, high suicidal intent, non-affective comorbidity, and access to firearms as factors that differentiated suicides from those who attempted or had significant suicidal ideation. Subsequently, he has studied the familial transmission of suicidal behavior, the impact of suicide bereavement on

peers, siblings, and youth, and the treatment and prevention of depression with pharmacotherapy and psychotherapy. Currently, he is working with a large team of investigators to develop a brief, adaptive screen for suicide risk to be administered in pediatric EDs, and on the development of an app-supported brief intervention of hospitalized suicidal youth.

## AWARDS

### **American Foundation for Suicide Prevention (AFSP) Young Investigator Travel Awardees**

#### **Sally Weinstein, Ph.D.**

Assistant Professor of Clinical Psychology in Psychiatry  
Department of Psychiatry  
University of Illinois at Chicago College of Medicine  
Chicago, IL

#### **Stéphane Richard-Devantoy, M.D., Ph.D.**

Adjunct Professor  
Douglas Mental Health University Institute  
McGill University  
Montréal, Canada



## IASR MEMBERSHIP INFORMATION

There are three categories of IASR members: **Junior Members, Regular Members and Fellows of the Academy.**

**Junior Members** are individuals engaged in suicide research under the direction of a mentor. Examples are postdoctoral trainees, doctoral or masters students. The duration of a junior membership is limited to 3 years at the end of which they will automatically be considered for regular membership.

Junior members:

- pay no dues
- have free access the electronic version of the journal
- are invited to the meeting
- receive the IASR newsletter
- are eligible for IASR Star Awards

**Regular Members** are individuals who are engaged in ongoing research on suicide, either directly or as advisers, reviewers or consultants in an academic institution or equivalent.

Regular members:

- pay annual dues of \$125 USD (US Dollars)
- receive a print copy of the journal
- have access the electronic version of the journal at no charge

**Fellows of the Academy** are individuals who have established a reputation as significant contributors to knowledge in the field of suicidal behavior. This is exemplified by directing and designing innovative research, making significant contributions to the peer reviewed literature and providing guidance to trainees and developing scientists. Fellows are appointed from among existing regular members or de novo from the scientific community.

### **Criteria for Membership in the Academy**

The person should be an outstanding and internationally recognized researcher in the field of suicidology as indicated by publications in peer review journals.

- The research need not necessarily be empirical research, but can include theoretical, ethical or legal research work.
- Should be highly recommended by peers.
- No history of scientific misconduct.

### **Application Procedure for Membership in the IASR**

The applicant should submit an updated curriculum vitae along with letters of nomination from two (2) current full members.

Please use the online forms at [www.suicide-research.org](http://www.suicide-research.org), or send your application material by mail to the IASR Secretary - Treasurer, Dr. Annette Erlangsen, at the following address:  
[secretary@suicide-research.org](mailto:secretary@suicide-research.org)

All materials received will be reviewed by the Membership Committee, and the applicant will be notified by letter of the Academy's decision.

## MENTORSHIP

**The International Academy of Suicide Research (IASR)** is committed to fostering the development of Early Career Researchers (ECRs), such as graduate students, postdoctoral fellows, residents, and junior faculty, within the field of suicidology and is planning an exciting and valuable program for ECRs during the International Summit on Suicide Research. This mentoring program, inaugurated at the previous IASR meeting, will pair ECRs with established senior investigators based upon their shared research interests. Mentors and mentees will meet at a special breakfast on the second day of the conference, at which Professor Matthew Nock will give a talk, providing his advice for junior investigators. The program will also feature the very popular, interactive 'Editors' Roundtable' session, with contributions from Drs. Barbara Stanley, Maria Oquendo, and Thomas Joiner.

# ACKNOWLEDGEMENTS

## IASR Board Members

**President:** Rory O'Connor  
**President-Elect:** Maria Oquendo

**ASR Editor-in-Chief:** Barbara Stanley  
**Secretary-Treasurer:** Annette Erlangsen

## Past Presidents

Gustavo Turecki  
David Shaffer  
Jouko Lonnqvist

Danuta Wasserman  
John Mann  
Bob Goldney

Armin Schmidtke  
Diego De Leo  
René FW Diekstra

## 2015 Summit Committees

### Organizing Committee

Maria Oquendo, Co-Chair, IASR  
Barbara Stanley, Co-Chair, IASR  
Christine Moutier, AFSP

Jill Harkavy-Friedman, AFSP  
Robert Gebbia, AFSP

### International Program Committee

Maria Oquendo, Co-Chair  
Barbara Stanley, Co-Chair  
Ella Arensman  
Enrique Baca-Garcia  
Edwin Boudreaux  
Lisa Brenner  
David Brent  
Gregory Brown

Philippe Courtet  
Madelyn Gould  
Jill Harkavy-Friedman  
Marjan Holloway  
Erkki Isometsa  
Cheryl King  
John Mann  
Lars Mehlum

Christine Moutier  
Matthew Nock  
Rory O'Connor  
Pilar Saiz  
Katalin Szanto  
Gustavo Turecki  
Kees van Heeringen

### International Advisory Committee

Maria Oquendo, Co-Chair  
Barbara Stanley, Co-Chair  
Alan Apter  
Victoria Arango  
Ella Arensman  
Enrique Baca-Garcia  
Annette Beautrais  
Antoni Benabarre  
Edwin Boudreaux  
Lisa Brenner  
David Brent  
Gregory Brown  
Eric Caine  
Helen Christensen  
Castulo Cisneros  
Yeates Conwell  
Rodrigo Cordoba  
Philippe Courtet  
Diego de Leo  
Robert Goldney  
Lilia González

Madelyn Gould  
John Greden  
David Gunnell  
Peter Gutierrez  
Jill Harkavy-Friedman  
Keith Hawton  
Ulrich Hegerl  
Marjan Holloway  
Erkki Isometsa  
David Jobes  
Thomas Joiner  
Nav Kapur  
Cheryl King  
David Klonsky  
Carlos Lopez  
John Mann  
Juan Carlos Martínez  
Lars Mehlum  
Matthew Miller  
Christine Moutier  
Charles Nemeroff

Matthew Nock  
Merete Nordentoft  
Rory O'Connor  
Hernan Ortiz  
Michael Phillips  
Jane Pirkis  
Ping Qin  
Zoltan Rhimer  
David Rudd  
Daniel Rujescu  
Pilar Saiz  
Marco Sarchiapone  
Katalin Szanto  
Gustavo Turecki  
Guillaume Vaiva  
Kees van Heeringen  
Lakshmi Vijayakumar  
Danuta Wasserman  
Paul Yip  
Gil Zalsman

# MEETING ANNOUNCEMENTS

## Meeting Services

### **Registration Desk Hours:**

#### **West Lounge – Main Lobby Level**

Saturday 4:00 PM – 7:00 PM

#### **Silver Corridor – Third Level**

Sunday 7:00 AM – 6:30 PM

Monday 7:00 AM – 5:00 PM

Tuesday 7:30 AM – 5:00 PM

Wednesday 7:30 AM – 2:00 PM

**The Summit Speaker Ready Room is open on the below dates and times for presenters to upload slides. The meeting organizers ask that all speakers upload their slides 24 hours prior to their scheduled presentation time.**

## **Speaker Ready Room**

### **Herbert Hoover Suite – Fourth Level**

Saturday 4:00 PM – 7:00 PM

Sunday 7:00 AM – 5:00 PM

Monday 7:00 AM – 5:00 PM

Tuesday 7:30 AM – 5:00 PM

Wednesday 7:00 AM – 12:30 PM

## Summit Wifi

Network: summit15

Password: summit15

**Americans with Disabilities Act** - It is the policy of the Summit not to discriminate against any person on the basis of disabilities. If you feel you need services or auxiliary aids mentioned in this act in order to fully participate in this continuing education activity, please call the Executive Office at 615-324-2365 or send an email to [info@suicideresearchsummit.org](mailto:info@suicideresearchsummit.org).

## FEATURED SPEAKERS

### ***On the Measurement of Suicidal Propensity and the Computation of Risk***

Sunday, October 11, 2015 from 4:00 PM – 5:00 PM



#### **Robert Gibbons, Ph.D.**

The University of Chicago Biological Sciences  
Director of the Center for Health Statistics

Robert Gibbons is a Pritzker Scholar and Professor of Biostatistics in the Departments of Public Health Sciences, Medicine and Psychiatry at the University of Chicago, where he also directs the Center for Health Statistics. Professor Gibbons is a Fellow of the American Statistical Association and a member of the National Academy of Medicine of the National Academy of Sciences. He has authored more than 275 peer-reviewed scientific papers and five books. His statistical work spans the areas of longitudinal data analysis, item response theory, environmental statistics and drug safety and has led to thousands of applications in the biological and social sciences. Professor Gibbons received the Harvard Award for life-time contributions to biostatistics, the Rema Lapouse

Award for contributions to Psychiatric Epidemiology from the American Public Health Association, the Long-Term Excellence Award from the Health Policy Statistics Section of the American Statistical Association, two Youden Prizes for contributions to statistics in chemistry from the American Statistical Association as well as their Outstanding Statistical Application award. He is a founder of the Mental Health Statistics section of the American Statistical Association.

## FEATURED SPEAKERS

### ***Leveraging Public Opinion and Policy to Support Suicide Prevention Research***

Sunday, October 11, 2015 from 4:00 PM – 5:00 PM



**Mary Woolley**

Research!America  
President

Mary Woolley is the president of Research!America, the nation's largest not-for-profit, membership supported grassroots public education and advocacy organization committed to making medical and health research a higher national priority. Under her leadership, Research!America has earned the attention and respect of elected and appointed officials, researchers in the public, private and academic sectors, media, and community leaders with its record of innovation in advocacy for research.

A native of Chicago, Woolley received a bachelor of science from Stanford University and a master of arts from San Francisco State University. In her early career, Woolley served as San Francisco project director for the then largest-ever NIH-funded clinical trial, the Multiple Risk Factor Intervention Trial (MRFIT). In 1981, she became administrator of the Medical Research Institute of San Francisco, and in 1986 was named the Institute's executive director and CEO. Woolley has served as president and CEO of Research!America since 1990.

### ***Reducing Suicide: A Research Perspective***

Tuesday, October 13, 2015 from 2:30 PM to 3:30 PM



**Thomas Insel, M.D.**

National Institute of Mental Health (NIMH)  
Director

Thomas R. Insel, M.D., is Director of the National Institute of Mental Health (NIMH), the component of the National Institutes of Health (NIH) committed to research on mental disorders. Dr. Insel has served as Director of this \$1.5B agency since 2002. During his tenure, Dr. Insel has focused on the genetics and neurobiology of mental disorders as well as transforming approaches to diagnosis and treatment. Prior to serving as NIMH Director, Dr. Insel was Professor of Psychiatry at Emory University where he was founding director of the Center for Behavioral Neuroscience and director of the Yerkes Regional Primate Center in Atlanta. Dr. Insel's research has examined the neural basis of complex social behaviors, including maternal care and attachment. A member of the Institute of Medicine, he has received numerous national and international awards and served in several leadership roles at NIH.



**Target Audience:** This course is designed for psychiatrists, psychologists and other professionals working to reduce the number of suicides that occur each year. There are no prerequisites for this course.

*These objectives support medical assessment and management with patient populations for **physicians, nurses, nurse practitioners, physician assistants and pharmacists.***

The learning objectives for the Summit:

1. Participants will be able to articulate the key findings in the development of preventive/ intervention strategies and how to incorporate translational research strategies into intervention studies.
2. Participants will be able to describe methodological and ethical challenges in research design for studies where the outcome of interest is suicidal behavior.
3. Participants will be able to enumerate the most recent neurobiological, genetic, psychological and social evidence related to suicidal behavior.

The learning objectives for Clinician's Day:

1. Participants will be able to articulate the risk factors and warning signs for suicide.
2. Participants will be able to describe several short-term management strategies for patients experiencing suicidal ideation or behavior.
3. Participants will be able to enumerate several available evidence-based strategies for treating the suicidal individual.
4. Participants will be able to discuss the key medical legal issues and recommended strategies for mitigating risk in working with suicidal patients.

**Continuing Education Credits** are available for physicians and psychologists. Applications for credit must be completed online with the meeting evaluation survey. The survey may be completed after the conference at [www.SuicideResearchSummit.org](http://www.SuicideResearchSummit.org). **Surveys for continuing education credit must be submitted no later than November 17, 2015.**

## ACCREDITATION STATEMENTS



**PHYSICIAN:** This activity has been planned and implemented in accordance with the accreditation requirements and policies of the Accreditation Council for Continuing Medical Education (ACCME) through the joint providership of USF Health, the International Academy of Suicide Research and the American Foundation for Suicide Prevention. USF Health is accredited by the ACCME to provide continuing medical education for physicians.

USF Health designates this live activity for a maximum of 23 *AMA PRA Category 1 Credits™*. Physicians should claim only the credit commensurate with the extent of their participation in the activity.



**PSYCHOLOGISTS:** USF Health is approved by the American Psychological Association to sponsor continuing education for psychologists. USF Health maintains responsibility for this program and its content. This activity is approved for 23 CE credits. Full attendance to the conference is required. Partial credit will not be awarded.

### Disclaimer

The information provided at this CME/CE activity is for continuing education purposes only and is not meant to substitute for the independent medical/clinical judgment of a healthcare provider relative to diagnostic and treatment options of a specific patient's medical condition.

USF Health Office of Continuing Professional Development reserves the right to cancel this activity due to unforeseen circumstances, in which the full registration fee will be refunded. USF Health is not responsible for travel expenses incurred by the participants in the unlikely event that this activity is cancelled. USF is an Equal Opportunity / Affirmative Action / Equal Access Institution. For disability accommodations contact CPDSUPPORT@health.usf.edu (813-224-7860), within five days of the event.

Disclosures for all Summit presenters can be viewed at [www.SuicideResearchSummit.org](http://www.SuicideResearchSummit.org).

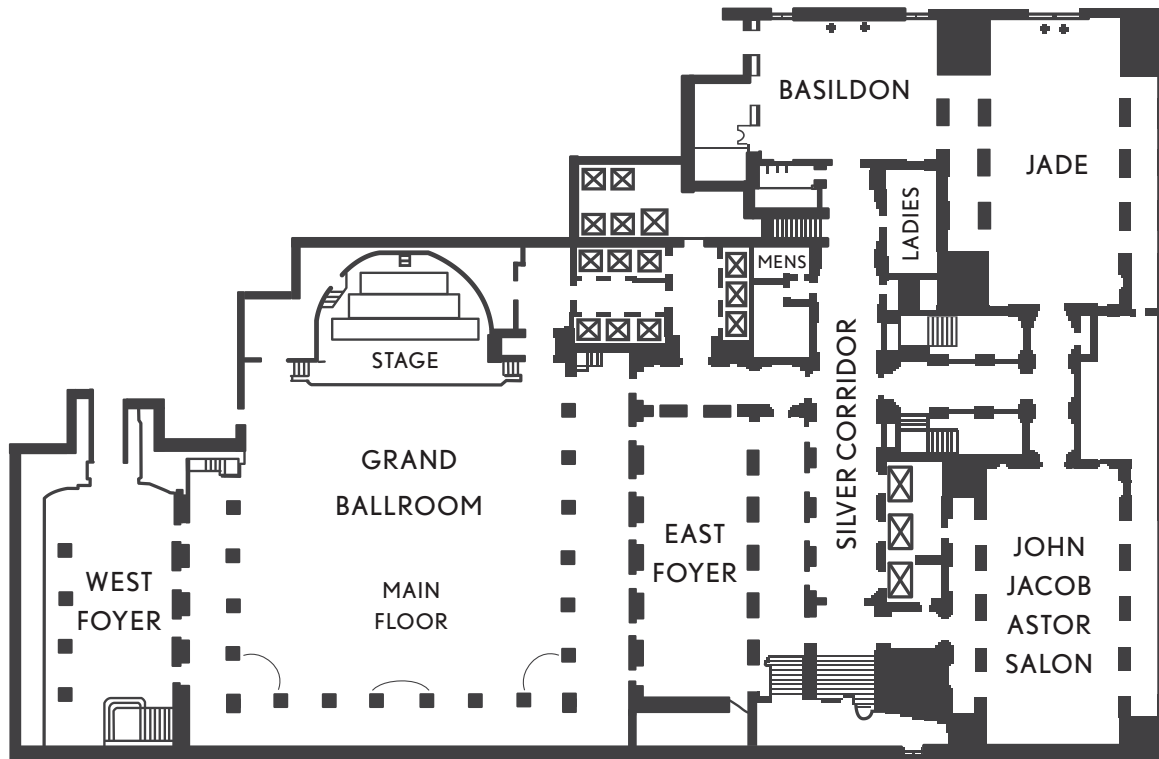
**All participants who request continuing education credits by November 17, 2015, should expect to receive their statement of credits via email in December.**

**The Meeting Evaluation Survey** will be available at [www.SuicideResearchSummit.org](http://www.SuicideResearchSummit.org). We encourage all registrants to complete the evaluation. **Attendees requesting CME or CE credits must complete the survey in order to obtain credits.** Your candid input on the 2015 meeting is appreciated as we strive to improve the meeting for future years.

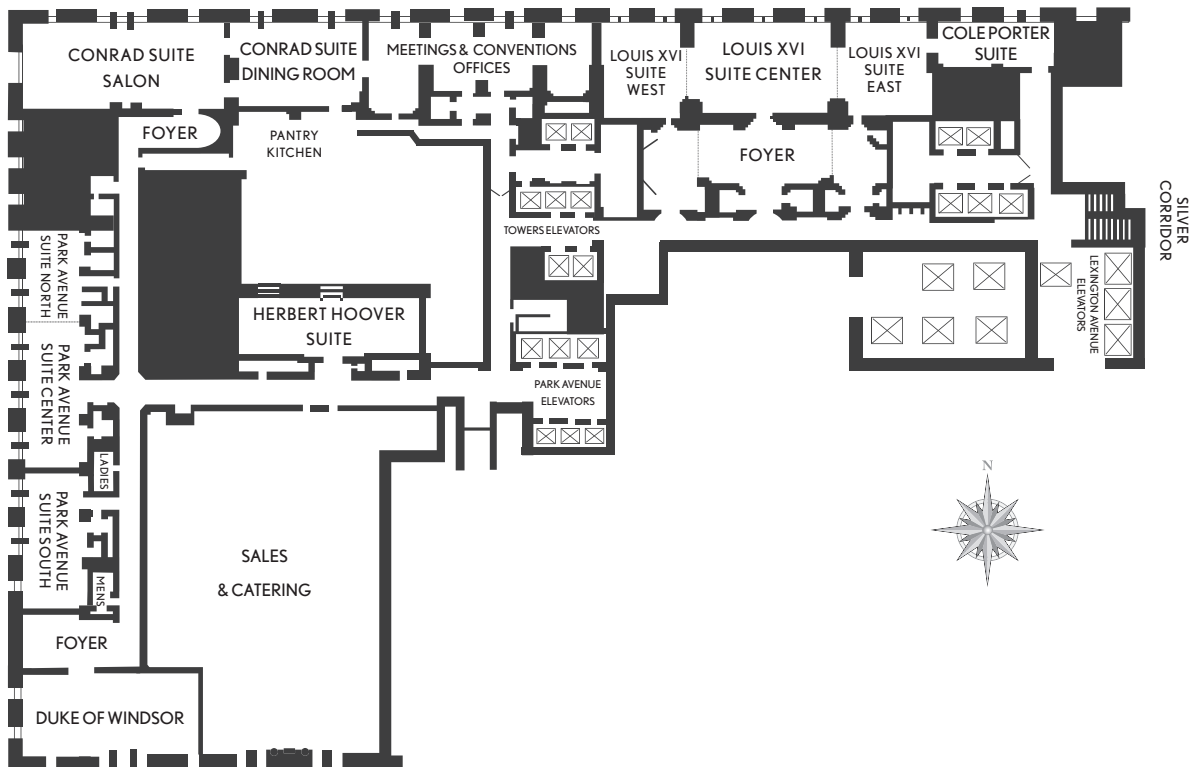


# CONFERENCE CENTER LAYOUT

## THIRD FLOOR BALLROOMS



## FOURTH FLOOR MEETING CENTER



## FUNDING AND SPONSOR ACKNOWLEDGEMENTS

The Summit would like to acknowledge the generosity of the following companies whose corporate support has contributed to the overall quality of this meeting:



The Summit would like to acknowledge the generosity of the following companies whose unrestricted educational grants have contributed to the overall quality of this meeting:

Lundbeck and Otsuka

Sunovion

Actavis/Forest Laboratories, LLC

# SUNDAY, OCTOBER 11, 2015

## Schedule At a Glance

7:30 AM	Morning Coffee	East Foyer
8:00 AM - 8:15 AM	Welcoming Remarks	Grand Ballroom
8:15 AM - 8:45 AM	<b>Suicide Prevention: Setting the Stage</b>	Grand Ballroom
8:45 AM - 9:45 AM	<b>Suicide Risk Assessment: State of the Art</b>	Grand Ballroom
9:45 AM - 10:00 AM	Break	East Foyer
10:00 AM - 11:00 AM	<b>Managing Suicidal Patients in Outpatient Settings: Strategies to Safely Avoid Hospitalization</b>	Grand Ballroom
11:00 AM - 12:00 PM	<b>Psychotherapeutic Approaches with Suicidal Patients</b>	Grand Ballroom
12:00 PM - 1:00 PM	Lunch on Own	
1:00 PM - 2:00 PM	<b>Neurobiology of Suicide and Pharmacological Approaches</b>	Grand Ballroom
1:00 PM - 2:45 PM	<b>Concurrent Oral Sessions</b> <i>-Genes, Gene Expression, and Neurobiology of Suicidal Behavior</i> <i>-Longitudinal Studies of Suicidal Behavior</i> <i>-Innovative Population and Community-based Interventions to Prevent Suicide</i>	Jade Astor Salon Basildon
2:00 PM - 2:45 PM	<b>Managing Medicolegal Risk when Treating Suicidal Patients</b>	Grand Ballroom
2:45 PM - 3:00 PM	Clinician's Day Wrap Up	Grand Ballroom
3:00 PM - 3:15 PM	Welcome & Morselli Award Presentation	Grand Ballroom
3:15 PM - 4:00 PM	<b>Living Room Discussion: Promises and Challenges of Interventions to Prevent Suicide to Suicide</b>	Grand Ballroom
4:00 PM - 5:00 PM	<b>Keynote Session</b> <i>Leveraging Public Opinion and Policy to Support Suicide Prevention Research, Mary Woolley</i> <i>On the Measurement of Suicidal Propensity and the Computation of Risk, Robert Gibbons</i>	Grand Ballroom
6:00 PM - 10:00 PM	Welcome Reception	Starlight Roof

Sunday  
October 11, 2015



## SUNDAY, OCTOBER 11, 2015

7:30 AM Morning Coffee  
Location: East Foyer

8:00 AM - 8:15 AM Welcoming Remarks  
Location: Grand Ballroom  
*AFSP and Lynn Keane*

8:15 AM - 8:45 AM **Suicide Prevention: Setting the Stage**  
Location: Grand Ballroom  
*Christine Moutier*

**Abstract:** Suicide prevention as a field has grown tremendously in the past 50 years. In this 30-minute session, key developments clinicians should be aware of for their practice and as leaders in society will be presented. This session will kick off the day-long conference, giving clinicians a number of perspectives to frame the issue of suicide throughout the day. Highlights include a conceptual model for understanding suicide risk, understanding suicide from a public health perspective, grassroots activities impacting social stigma, and public policies that have the potential to lower suicide rates. Clinicians can play a role in reducing the rate of suicide, both through their clinical work with patients at risk for suicide, but also through other potential roles they play: as leaders in their local, regional, or national communities, media spokespersons, educators, and policy advocates.

8:45 AM - 9:45 AM **Suicide Risk Assessment: State of the Art**  
Location: Grand Ballroom  
Chair: Keith Hawton  
*Jill Harkavy-Friedman*

**Abstract:** Clinicians are expected to assess for suicide risk with each person at intake. The process is started in the initial evaluation and continues throughout treatment. Assessment of current and past suicidal behavior and additional risk factors will be reviewed. The potential therapeutic impact of assessing for suicidal thoughts, behaviors and risk will be discussed as well as how to engage with collateral resources in order to maintain an approach aimed at suicide prevention. Active discussion will be encouraged throughout the presentation.

9:45 AM - 10:00 AM Break  
Location: East Foyer

10:00 AM - 11:00 AM

### **Managing Suicidal Patients in Outpatient Settings: Strategies to Safely Avoid Hospitalization**

Location:

Grand Ballroom

*David Jobes*

**Abstract:** There is emerging research showing the virtue of managing suicidal patients on an outpatient basis. This presentation will feature a review of suicide-specific management and treatment techniques that can be used to effectively work with suicidal patients within outpatient mental health care. Some of these interventions include various forms of stabilization planning (e.g., safety planning and crisis response planning). In terms of clinical treatments, replicated clinical trial studies have shown the effectiveness of Dialectical Behavior Therapy (DBT), Cognitive Therapy for Suicide Prevention (CT-SP), and the Collaborative Assessment and Management for Suicidality (CAMS) as proven evidence-based outpatient treatments for suicidal risk. In addition, there is emerging interest in brief interventions (1-4 sessions), the use of non-demand follow-up caring contact, and potential new technologies that can supplement suicide-specific care. These various interventions will all be considered within a stepped-care model of suicide treatment that emphasizes evidence-based suicide-specific care that is least restrictive and cost effective. Finally, potential concerns about suicide-related malpractice liability will be considered.

11:00 AM – 12:00 PM

### **Psychotherapeutic Approaches with Suicidal Patients**

Location:

Grand Ballroom

*Greg Brown and Lars Mehlum*

*Greg Brown*

**Abstract:** Although nearly all clinicians are faced with suicidal patients in their practice, there are few guidelines for treating patients with acute suicide ideation or who have recently made a suicide attempt. This presentation will provide an overview of an empirically supported cognitive intervention for treating suicidal patients. Conceptualization of the risk factors associated with suicidal acts from a cognitive perspective will be described and linked to treatment planning. The steps for conducting a cognitively-based suicide risk assessment and for developing a safety plan in collaboration with suicidal patients will be presented. Specific intervention strategies that take place in the early, intermediate, and later phases of treatment will be illustrated through didactic presentation and case discussion.

*Lars Mehlum*

**Abstract:** Suicidal and self-harming behavior - highly prevalent in adolescents and a strong risk factor for long-lasting psychiatric morbidity and completed suicide – is often experienced as particularly challenging and risky to treat by many clinicians. A large proportion of self-harming and suicidal teenagers receive little or no treatment, and among those adolescents who have indeed been referred to specialized care, many drop out prematurely because of their treatment interfering behaviors or lack of support from families or clinical services. Despite these challenges, several effective approaches

**Abstract Continued**

to treat suicidal teenagers have been developed in recent years; interventions that are accessible and acceptable to the teens and their families, as well as feasible to deliver in community mental health settings. This presentation will briefly review some of these treatments and their research base and, furthermore, highlight what seem to be important components of interventions aiming at reducing the risk of suicidal behavior in this patient population. Whereas treatment research with suicidal and self-harming adolescents and their families remains one of the most complex and demanding tasks clinical researchers can undertake, a lot of progress has been made over recent years that gives reason for treatment optimism provided we are able to use the new knowledge in routine clinical practice in the many contexts self-harming adolescents are encountered.

12:00 PM – 1:00 PM      Lunch on own

1:00 PM - 2:00 PM      **Neurobiology of Suicide and Pharmacological Approaches**  
Location:                      Grand Ballroom  
   *John Mann and John Walkup*

*John Mann*

**Abstract:** In 2004, the FDA placed a black box warning about risk of treatment-related suicide of antidepressants in children and in 2006 this warning was extended to young adults. Later this warning was extended to other classes of medication like anti-epileptic drugs and varenicline. It is hard to understand how so many different classes of medication, only some of which are antidepressants, can share the property of increasing the risk of suicidal behavior. At the same time we have learned certain things about the neurobiology of suicidal behavior, such as evidence for deficient serotonin transmission, that indicate enhancement of serotonin transmission should be protective. This presentation will review risk and benefit estimates from much research that has been published since the FDA warning was issued including results of randomized controlled trials to pharmaco-epidemiologic data sets. The results tend to show how FDA risk-benefit estimates, which are based on more than ten year old RCT-level meta-analyses, generated a more negative picture than current findings. These newer results are also more consistent with what is known about the neurobiology of suicidal behavior. A case may be made for re-evaluation of black box warnings related to suicide risk.

*John Walkup*

**Abstract:** This presentation will focus on the pharmacological approach to the children and adolescents with suicidal and self-injurious behavior. At this time there are limited data on pharmacological approaches to suicidal behavior, but extensive data exist regarding treatment of co-occurring psychiatric disorders and symptoms that are often driving suicidal behavior including impulsivity, anxiety, low mood, dysregulated emotions and behavior. The presentation will also review the data and impact of psychotropic medications on suicidal risk in children and adolescents. Particular emphasis will be on the importance of timely pharmacological intervention in reducing suicidal behavior.

**Concurrent Oral Sessions**

1:00 PM – 2:45 PM

Location:

**Genes, Gene Expression, and Neurobiology of Suicidal Behavior**

Jade

Chair: Gustavo Turecki

1:00 PM - 1:15 PM

White Matter Oligodendrocyte Pathology in Depression and Suicide

*Gregory Ordway*

1:15 PM - 1:30 PM

Brain Vitamin D Receptor and Cathelicidine Expression in Depressed Suicides

*Teodor Postolache*

1:30 PM - 1:45 PM

Regulation of Hippocampal Neurogenesis in Suicide

*Maura Boldrini*

1:45 PM - 2:00 PM

Discovery of a DNA Methylation Stress Proxy for Use in Suicide Prediction Model

*Makena Clive*

2:00 PM - 2:15 PM

Hippocampal CA3 Related Orienting Dysfunction in Depressed Suicide Victims?

*Lars Thorell*

2:15 PM - 2:30 PM

Association of Genes of the Serotonergic System with Completed Suicide: A Protocol Development for Study in Indian Population

*Chittaranjan Behera*

2:30 PM - 2:45 PM

Investigating DNA Methylation Alterations in Suicide Completers

*Marie Breen*



## SUNDAY, OCTOBER 11, 2015

1:00 PM – 2:45 PM **Innovative Population and Community-based Interventions to Prevent Suicide**

Location: Basildon  
Chair: Eric Caine

1:00 PM - 1:15 PM Suicide Rates and State Laws Regulating Access and Exposure to Handguns  
*Michael Anestis*

1:15 PM - 1:30 PM Interventions to Reduce Suicides at Suicide Hotspots  
*Jane Pirkis*

1:30 PM - 1:45 PM Online Suicide Risk Detection Using Automatic Text Classification  
*Bart Desmet*

1:45 PM - 2:00 PM Suicide Prevention at Community Level: From Research to Policy Through Science / Arts Collaboration  
*Kevin Malone*

2:00 PM - 2:15 PM Unlocking the Potential for Public Education Campaigns to Support Suicide Prevention initiatives: An Examination of the Use of Targeted Public Health Messaging to Promote Help Seeking  
*Elizabeth Karras*

2:15 PM - 2:30 PM International Rises in the Incidence of Helium Suicide: Epidemiology, the Internet and Public Health Responses  
*David Gunnell*

2:30 PM - 2:45 PM Evaluating the Effects of a School-based Screening for Current Suicidality in 11 European Countries  
*Michael Kaess*

## SUNDAY, OCTOBER 11, 2015

1:00 PM – 2:45 PM

Location:

### **Longitudinal Studies of Suicidal Behavior**

Astor Salon

Chair: Ping Qin

1:00 PM - 1:15 PM

The Effect of Hospitalization Following Suicide Attempt on Re-attempt Risk and Death among Veterans

*Claire Hoffmire*

1:15 PM - 1:30 PM

Nature and Determinants of the Longitudinal Course of Suicidal Ideation among U.S. Veterans: Results from the National Health and Resilience in Veterans Study

*Noelle Smith*

1:30 PM - 1:45 PM

Methods and Outcomes of Tribally Initiated Community-based Suicide Surveillance and Follow-up

*Mary Cwik*

1:45 PM - 2:00 PM

Suicide in Danish, Icelandic, and Norwegian Prisons, 1980-2012

*Britt Morthorst*

2:00 PM - 2:15 PM

Is the War Really Over? A 17-Year Longitudinal Study on Suicidal Ideation among Former Prisoners of War

*Yossi Levi-Belz*

2:15 PM - 2:30 PM

Does Psychosocial Therapy Provided to Persons After Deliberate Self-harm Improve Social Outcomes? - A Register-based, Nationwide Multicentre Study Using Propensity Score Matching

*Annette Erlangsen*

2:30 PM - 2:45 PM

Longitudinal Association Between Truancy and Suicide Attempts in a Large Sample of Adolescents

*Vladimir Carli*

## SUNDAY, OCTOBER 11, 2015

2:00 PM - 2:45 PM **Managing Medicolegal Risk when Treating Suicidal Patients**

Location: Grand Ballroom  
*Lanny Berman*

**Abstract:** Patients at-risk of suicide or suicidal behaviors are often anxiety-provoking to clinical mental health professionals and threaten negative outcomes, both in terms of their potential to act on suicidal urges and, in consequence to such actions, the potential threat of a malpractice action. Clinicians are charged with meeting the standard of care in their assessment and treatment of at-risk for suicide patients, but too frequently are driven by their anxiety, insufficient training in, or misguided understandings of what constitutes reasonable, no less optimal, care of these patients. This presentation will offer strategies to both meet and maximize standards of care in working with patients at-risk for suicide, hence minimize negative outcomes.

2:45 PM – 3:00 PM Clinician’s Day Wrap Up

Location: Grand Ballroom

3:00 PM – 3:15 PM Welcome & Morselli Award Presentation

Location: Grand Ballroom

3:15 PM – 4:00 PM **Living Room Discussion: Promises and Challenges of Interventions to Prevent Suicide to Suicide**

Location: Grand Ballroom

Participants: *Mark Williams*  
*David Brent*

4:00 PM – 5:00 PM **Keynote Session**

Location: Grand Ballroom

Leveraging Public Opinion and Policy to Support Suicide Prevention Research  
*Mary Woolley*

On the Measurement of Suicidal Propensity and the Computation of Risk  
*Robert Gibbons*

6:00 PM – 10:00 PM Welcome Reception

Location: Starlight Roof



**Schedule At a Glance**

6:45 AM	Early Career Researcher Breakfast and Editors' Roundtable	Louis XVI Suite
7:30 AM	Morning Coffee	East Foyer
8:00 AM - 9:15 AM	<b>Concurrent Symposia Sessions</b> <i>-Models to Understand Suicidal Behavior</i> <i>-Unlocking the Genetic Basis of Suicide</i> <i>-Suicidality Among Active Duty Military and Veterans: Analysis of Baseline Data from Current Clinical Trials</i> <i>-Strategies for Suicide Prevention at the Population Level</i>	Grand Ballroom Jade Astor Salon Basildon
9:30 AM - 10:45 AM	<b>Concurrent Symposia Sessions</b> <i>-Suicidal Behavior in Minority and Underrepresented Groups</i> <i>-NIMH Efforts to Improve Suicide Research: Panel Discussion on the Prioritized Agenda's Identified Research Infrastructure Needs</i> <i>-Understanding Factors that Impact the Transition from Suicidal Ideation to Suicide Attempts</i> <i>-Latest Findings in Neurocognition of Suicidal Behavior: What Does Neuroimaging and Neuropsychology Tell Us?</i>	Grand Ballroom Jade Astor Salon Basildon
10:45 AM - 11:00 AM	Break	East Foyer
11:00 AM - 12:15 PM	<b>Concurrent Symposia Sessions</b> <i>-Special Populations</i> <i>-Genetics of Suicidal Behavior: New Trends – ECNP Suicide Network Contribution</i> <i>-The Emergency Department Safety Assessment and Follow-up Evaluation: A Clinical Trial of Universal Screening and Enhanced Intervention</i> <i>-Registries and Administrative Databases</i>	Grand Ballroom Jade Astor Salon Basildon
12:15 PM - 1:00 PM	Lunch on own	
12:15 PM – 1:15 PM	IASR Membership Business Meeting ( <i>Members Only</i> )	Grand Ballroom
1:00 PM - 2:30 PM	<b>Poster Session I</b>	Grand Ballroom/ West Foyer
2:30 PM - 3:45 PM	<b>Concurrent Symposia Sessions</b> <i>-Novel Strategies for Data Collection and Intervention: Leveraging Technology</i> <i>-Research Update on Suicide and Ketamine</i> <i>-Suicide Screening in Primary Care</i> <i>-Decision Making and Suicidal Behavior</i>	Grand Ballroom Jade Astor Salon Basildon

## MONDAY, OCTOBER 12, 2015

### Schedule At a Glance (continued)

3:45 PM - 4:00 PM	Break	East Foyer
4:00 PM - 5:00 PM	Lived Experience in Suicide Research: The Power of Inclusion	Grand Ballroom

## MONDAY, OCTOBER 12, 2015

6:45 AM – 8:00 AM

### **Early Career Researcher Breakfast and Editors' Roundtable**

Location:

Louis XVI Suite

Participants:

*Matt Nock*

*Barbara Stanley*

*Maria Oquendo*

*Thomas Joiner*

7:30 AM

Morning Coffee

Location:

East Foyer

### **Concurrent Symposia Sessions**

8:00 AM - 9:15 AM

### **Models to Understand Suicidal Behavior**

Location:

Grand Ballroom

Chair: Thomas Joiner

A Two Path Model of Suicidal Behavior in Adolescents

*Alan Apter*

Using RDoC as a Framework for Advancing the Understanding of Suicidal Behavior

*Matthew Nock*

The Ideation-to-action Framework and the Three-step Theory (3ST) of Suicide

*E. David Klonsky*

From Thoughts to Action: Understanding the Psychology of Suicide Risk

*Rory O'Connor*

## MONDAY, OCTOBER 12, 2015

8:00 AM - 9:15 AM

Location:

### **Unlocking the Genetic Basis of Suicide**

Jade

Chair: John Mann

Genetics of Suicidal Behavior and Intermediate Phenotypes

*Dan Rujescu*

Behavioral Regulation by the Early-life Environment: Insight into Novel  
Molecular Mechanisms

*Gustavo Turecki*

Stressful Life Events and Suicidal Behavior

*Pilar Saiz*

New Targets in Genetics of Suicide in Bipolar Disorder

*Antoni Benabarre*

8:00 AM - 9:15 AM

Location:

### **Strategies for Suicide Prevention at the Population Level**

Basildon

Chair: Christine Moutier

Population-Based Outreach to Prevent Suicide Attempt in Large Health  
Systems

*Gregory Simon*

Research and Prevention Challenges Related to Suicide in the Middle Years of  
Life

*Eric Caine*

Youth Suicide Contagion: Implications for Suicide Prevention and Postvention  
on College and University Campuses

*Madelyn Gould*

Strategies for Suicide Prevention at the Population Level Saving and  
Empowering Young Lives in Europe: School-based Suicide Preventive  
Interventions

*Danuta Wasserman*



## MONDAY, OCTOBER 12, 2015

8:00 AM - 9:15 AM

### **Suicidality among Active Duty Military and Veterans: Analysis of Baseline Data from Current Clinical Trials**

Location:

Astor Salon

Chair: Peter Gutierrez

Moderator: Katherine Comtois

Differences in Risk Factors and Characteristics of Suicide Attempts Between Active Duty Military Personnel and Veterans

*Jennifer Villate*

Differentiators of Military Personnel with a History of One Versus Multiple Suicide Attempts

*Peter Gutierrez*

Acquired Capability for Suicide among Active Duty Military Personnel

*Amanda Kerbrat*

Suicidal Ideation Severity, Suicide Attempts and Resilience among Treatment-engaged Active Duty Service Members: Examining the Influence of PTSD, Depression, Substance Abuse and Traumatic Brain Injury

*Jennifer Villate*

### **Concurrent Symposia Sessions**

9:30 AM - 10:45 AM

### **Suicidal Behavior in Minority and Underrepresented Groups**

Location:

Grand Ballroom

Chair: Maria Oquendo

Suicide Prevention for American Indian Youth

*John Walkup*

State of the Science on Black Adolescents Suicidal Behavior

*Sean Joe*

Suicidal Behavior in Sexual Minorities in Sweden

*Charlotte Bjorkenstam*

Grady Nia Project: Culturally Competent Treatment of Abused, Suicidal Low-income African American Women

*Nadine Kaslow*

## MONDAY, OCTOBER 12, 2015

9:30 AM - 10:45 AM

### **NIMH Efforts to Improve Suicide Research: Panel Discussion on the Prioritized Agenda's Identified Research Infrastructure Needs**

Location:

Jade

Chair: Jane Pearson

Suicide Research Portfolio Analyses: Tracking Research Infrastructure Investments and Research Progress

*Jane Pearson*

NIMH Common Data Elements and Data Sharing Infrastructure

*Gregory Farber*

Applying RDoC to Suicide-related Research Studies

*Holly Garriock*

NIMH Priorities and Funding Approaches for Interventions Research on Suicide Prevention Strategies

*Joel Sherrill*

9:30 AM - 10:45 AM

### **Latest Findings in Neurocognition of Suicidal Behavior: What does Neuroimaging and Neuropsychology Tell Us?**

Location:

Basildon

Chair: Stéphane Richard-Devantoy

Deficient Inhibition as a Step Towards Suicide?

*Stéphane Richard-Devantoy*

Neurocognition in Relatives of Suicide Completers: What is Heritable?

*Fabrice Jollant*

Role of Valuation of Social and Environmental Factors in Suicide Attempters

*Emilie Olié*

Identifying Fundamental Neurocognitive Deficits in Suicide Attempters

*John Keilp*

## MONDAY, OCTOBER 12, 2015

9:30 AM - 10:45 AM

### **Understanding Factors that Impact the Transition from Suicidal Ideation to Suicide Attempts**

Location:

Astor Salon

Chair: Regina Miranda

Moderator: David Shaffer

Substance Use and Suicidality: Specificity of Substance Use by Injection to Suicide Attempts in an Epidemiological Sample

*Richard Liu*

Incidence, Persistence, and Transitions in Form of Suicidal Ideation in Early Adolescence

*Ana Ortin Peralta*

Understanding the Relationship of Self-reported Executive Functioning to Suicide Ideation and Suicide Attempt

*E. David Klonsky*

Brief Versus Chronic Suicidal Ideation: Implications for Adolescent Suicide Attempts

*Regina Miranda*

10:45 AM – 11:00 AM

Break

Location:

East Foyer

**Concurrent Symposia Sessions**

11:00 AM - 12:15 PM

Location:

**Special Populations**

Grand Ballroom

Chair: Paula Clayton

Suicide in the Military- It Could Be Prevented- Lessons Learned from the IDF  
Suicide Prevention Program

*Eyal Fruchter*

Prevention of Suicide in Later Life -- A Public Health Perspective

*Yeates Conwell*

Suicide and Traumatic Brain Injury: Key Findings and Necessary Next Steps to  
Inform Policy and Practice

*Lisa Brenner*

Decision Making and Late-life Suicide: With Age Comes Wisdom?

*Katalin Szanto*

11:00 AM - 12:15 PM

Location:

**Genetics of Suicidal Behaviour: New Trends. ECNP Suicide Network  
Contribution**

Jade

Chair: Philippe Courtet

Moderator: Danuta Wasserman

Gene-Environment Interactions Between HPA Axis Regulatory Genes and  
Stressful Life Events in Suicide Attempts: Focus on Serotonin Receptor Type-2A

*Yair Ben-Efraim*

Genomics of Personality Traits as Risk Factors for Suicidal Behavior

*Dan Rujescu*

Pharmacogenetic Risk Factors and Suicide Prevention

*Eva Peñas Lledo*

## MONDAY, OCTOBER 12, 2015

11:00 AM - 12:15 PM

### **Registries and Administrative Databases**

Location:

Basildon

Chair: Marco Sarchiapone

Psychosocial Treatments for Adults Who Self-harm: Systematic Review

*Keith Hawton*

Enhancing Surveillance of Self-harm and Suicide - A Core Component of National Suicide Prevention Programmes

*Ella Arensman*

Risk Factors for Suicide and Deliberate Self-harm: Searching Evidence from Registries

*Ping Qin*

11:00 AM - 12:15 PM

### **The Emergency Department Safety Assessment and Follow-up Evaluation: A Clinical Trial of Universal Screening and Enhanced Intervention**

Location:

Astor Salon

Chair: Edwin Boudreaux

The Emergency Department Safety Assessment and Follow-up Evaluation: Study Design and Methods

*Edwin Boudreaux*

The Emergency Department Safety Assessment and Follow-up Evaluation: The Screening Outcome Evaluation

*Edwin Boudreaux*

The Emergency Department Safety Assessment and Follow-up Evaluation: The Intervention Outcome Evaluation

*Ivan Miller*

12:15 PM – 1:00 PM

Lunch on own

12:15 PM – 1:15 PM

IASR Membership Meeting (*Members Only*)

Location:

Grand Ballroom

1:00 PM – 2:30 PM

Poster Session I

Location:

West Foyer and Grand Ballroom

\*See pages 61 through 65 for a full listing of poster presentations.

**Concurrent Symposia Sessions**

2:30 PM - 3:45 PM

**Novel Strategies for Data Collection and Intervention: Leveraging Technology**

Location:

Grand Ballroom

Chair: Erkki Isometsä

Using EMA to Assess Suicidal Ideation and Self Harm Behaviors

*Barbara Stanley*

Novel Methods to Assess and Follow Suicidal Ideation

*Enrique Baca-Garcia*

Technology Facilitated Suicide Prevention Strategies

*Edwin Boudreaux*

2:30 PM - 3:45 PM

**Research Update on Suicide and Ketamine**

Location:

Jade

Chair: Elizabeth Ballard

Does Ketamine Have Rapid Anti-suicidal Effects? Results from a Randomized Controlled Pilot Study

*James Murrough*

Rapid Reductions in Suicidal Ideation Following Repeated, Flexible Doses of Intravenous Ketamine in Outpatients with Treatment-resistant Depression and Serious Risk for Suicide

*Dawn Ionescu*

Imaging and Sleep-related Biomarkers of Rapid Reduction of Suicidal Thoughts in Response to Ketamine

*Elizabeth Ballard*

Reversal of Stress-induced Hopelessness by Acute Ketamine Treatment: Involvement of microRNAs

*Yogesh Dwivedi*

## MONDAY, OCTOBER 12, 2015

2:30 PM - 3:45 PM

### **Decision Making and Suicidal Behavior**

Location:

Basildon

Chair: Yari Gvion

Neural Reward Value Signals, Impulsivity and Suicidal Behavior

*Alexandre Dombrovski*

Social Decision Making and Late-life Suicidal Behavior

*Katalin Szanto*

Loss Aversion and Suicide Attempts

*Gergo Hadlaczky*

2:30 PM - 3:45 PM

### **Suicide Screening in Primary Care**

Location:

Astor Salon

Chair: Guy Diamond

Moderator: Julie Goldstein Grumet

Behavioral Health-works: Overview and Findings

*Guy Diamond*

Lessons Learned from a Decade of Suicide Prevention in Primary Care

*Matthew Wintersteen*

Inside the Behavioral Health Screen

*Tita Atte*

Scientific Contributions of the Behavioral Health Screen

*Joanna Herres*

3:45 PM – 4:00 PM

Break

Location:

East Foyer

## MONDAY, OCTOBER 12, 2015

4:00 PM – 5:00 PM

### ***Lived Experience in Suicide Research: The Power of Inclusion***

Location:

Grand Ballroom

Moderator: Doreen Marshall

Participants:

*Lynn Keane*

*DeQuincy Lezine*

*Ursula Whiteside*



**Schedule At a Glance**

7:30 AM	Morning Coffee	East Foyer
8:00 AM - 9:15 AM	<b>Concurrent Symposia Sessions</b> <i>-Cells to Circuits: Neurobiology of Suicidal Behavior</i> <i>-Children and Adolescents at Risk</i> <i>-Adapting Interventions for Suicidal Youth: Consideration of Comorbidity, Culture, and Setting</i> <i>-Advancing the Prediction and Prevention of Suicidal Thoughts and Behaviors</i>	Grand Ballroom Jade Astor Salon Basildon
9:30 AM - 10:45 AM	<b>Concurrent Symposia Sessions</b> <i>-Psychosocial Interventions for Suicidal Behavior</i> <i>-Mechanisms of Altered Transcription in Mental Illness and Suicide</i> <i>-Integrating RDoC Concepts in Studies of Developmental Trajectories of Adolescent Suicide Risk</i> <i>-Advances in Understanding Completed Suicide in Lesbian, Gay, Bisexual, and Transgender Populations</i>	Grand Ballroom Jade Astor Salon Basildon
10:45 AM - 11:00 AM	Break	East Foyer
11:00 AM - 12:15 PM	<b>Concurrent Oral Sessions</b> <i>-Exploring Psychological Models of Suicidal Behavior</i> <i>-Cognition, Decision-making and Stress in Suicidal Behavior</i> <i>-Psychological Autopsy and Epidemiological Finds in Suicide</i> <i>-Psychosocial and Pharmacological Interventions for Suicidal Individuals</i>	Grand Ballroom Jade Astor Salon Basildon
12:15 PM - 1:00 PM	Lunch on Own	
1:00 PM - 2:30 PM	<b>Poster Session II</b>	Grand Ballroom/West Foyer
2:30 PM - 3:30 PM	<b>Keynote</b> - Thomas Insel <i>Reducing Suicide: A Research Perspective</i>	Grand Ballroom
3:30 PM - 3:45 PM	Break	East Foyer
3:45 PM - 5:00 PM	<b>Concurrent Symposia Sessions</b> <i>-Suicide Risk, Prevention and Response in Vulnerable Older Adults</i> <i>-Studies on Youth Suicidal Ideation and Behavior in a Life-course Perspective - The Role of Psychiatric Disorders and Related Health Care</i> <i>-Telephone Crisis Lines for Suicide Prevention in the USA</i> <i>-New Directions in Screening Medical Patients for Suicide Risk: STAT-ED, ASQ and Beyond</i>	Grand Ballroom Jade Astor Salon Basildon



## TUESDAY, OCTOBER 13, 2015

7:30 AM Morning Coffee  
Location: East Foyer

### Concurrent Symposia Sessions

8:00 AM - 9:15 AM **Cells to Circuits: Neurobiology of Suicidal Behavior**  
Location: Grand Ballroom  
Chair: Charles Nemeroff

Biomarkers Related to an Enhanced Sensitivity to Social Exclusion  
*Philippe Courtet*

Neuroimaging of Suicide-related Brain Circuits  
*Kees van Heeringen*

Non-coding RNAs: Implications for Synaptic Plasticity, Stress, and Suicide Pathogenesis  
*Yogesh Dwivedi*

Genetic Vulnerability, Timing of Short-term Stress and Mood Regulation in Depression and Self Injury  
*Gil Zalsman*

8:00 AM - 9:15 AM **Children and Adolescents at Risk**  
Location: Jade  
Chair: Jill Harkavy-Friedman

Identifying Youth at Risk for Suicide in the Emergency Department  
*Cheryl King*

Treatment of Self-harm in Adolescents - What Works?  
*Lars Mehlum*

Suicide in Children and Adolescents: The Global Picture  
*Diego de Leo*

Universal Intervention and Population Based Prevention Approaches  
*Holly Wilcox*

## TUESDAY, OCTOBER 13, 2015

8:00 AM - 9:15 AM

### **Advancing the Prediction and Prevention of Suicidal Thoughts and Behaviors**

Location:

Basildon

Chair: Jessica Ribeiro

Moderator: Thomas Joiner

Risk Factors for Suicidal Thoughts and Behaviors: A Meta-analysis of 50 Years of Research

*Joseph Franklin*

Short-term Prediction of Suicidal Thoughts and Behaviors

*Jessica Ribeiro*

A Novel Phone App Substantially Reduces Self-injury, Suicide Plans, and Suicidal Behaviors: Evidence from Three Randomized Control Trials

*Joseph Franklin*

8:00 AM - 9:15 AM

### **Adapting Interventions for Suicidal Youth: Consideration of Comorbidity, Culture, and Setting**

Location:

Astor Salon

Chair: Christianne Esposito-Smythers

Moderator: Anthony Spirito

The Development of a Suicide, Alcohol, and HIV Prevention Program for Teens in Mental Health Treatment

*Christianne Esposito-Smythers*

Developing and Testing a Brief Alcohol Intervention for Adolescents in Inpatient Treatment Who Have Attempted Suicide

*Kimberly O'Brien*

Adapting a Cognitive-behavioral Protocol for Suicidal Latino Adolescents in Puerto Rico and the USA

*Yovanska Duarte Vélez*

Implementing a Cognitive Behavioral Protocol for Dually Diagnosed Adolescents in an Outpatient Community Mental Health Clinic Intensive Outpatient Program

*Jennifer Wolff*

**Concurrent Symposia Sessions**

9:30 AM - 10:45 AM

Location:

**Psychosocial Interventions for Suicidal Behavior**

Grand Ballroom

Chair: Barbara Stanley

Internet-based Therapies for Depression and Suicidality; Possibilities and Challenges of an Emerging Field

*Pim Cuijpers*

Clinical Trials of the Collaborative Assessment and Management of Suicidality (CAMS)

*David Jobes*

Safety Planning and Structured Follow-up: A Brief Intervention for Suicide Prevention in Emergency Department Settings

*Gregory Brown*

Suicide Research and Training: A Critique

*Marsha Linehan*

9:30 AM - 10:45 AM

Location:

**Mechanisms of Altered Transcription in Mental Illness and Suicide**

Jade

Chair: John Mann

The Functional Serotonin 1a Receptor Promoter Polymorphism, rs6295, is Associated with Psychiatric Hospitalization, Suicide Attempts, and Differences in Transcription

*Zoe Donaldson*

Regional Differences in Expression of the Astrocytic Marker GFAP in the Human Brain: A Postmortem Comparison of Suicide Completers and Healthy Controls

*Naguib Mechawar*

MicroRNA Biomarkers of Depression and Antidepressant Response

*Gustavo Turecki*

Transcriptional Integration of Genotype-environment Interactions at the HTR1A Gene

*Paul Albert*

## TUESDAY, OCTOBER 13, 2015

9:30 AM - 10:45 AM

### **Advances in Understanding Completed Suicide in Lesbian, Gay, Bisexual, and Transgender Populations**

Location:

Basildon

Chair: Ann Haas

Moderator: Jill Harkavy-Friedman

Methodological Challenges in Studying Completed Suicide in LGBT Populations

*Ann Haas*

Attempted Suicide and Death by Suicide among Persons Living in Same-sex Unions in Denmark, 1980-2011

*Annette Erlangsen*

Following Forward and Tracing Back: Initiatives in LGBT Suicide Research in the United States

*John Blosnich*

9:30 AM - 10:45 AM

### **Integrating RDoC Concepts in Studies of Developmental Trajectories of Adolescent Suicide Risk**

Location:

Astor Salon

Chair: Holly Garriock

Moderator: David Brent

Developmental Trajectories of Suicidal Thoughts and Behavior from Adolescence Through Adulthood: A Study of Mechanisms Informed by the Research Domain Criteria

*David Goldston*

Neurocognitive Functioning in Depressed Adolescents with a History of Suicide Attempt or Suicidal Ideation

*Jeffrey Bridge*

Physiological and Genomic Markers of Negative Valence Systems (Loss) as Prospective Predictors of Adolescent Girls' Suicidal Ideation and Attempts

*Mitchell Prinstein*

Life Stress, Impulsivity, Reward Sensitivity, and Suicidal Behavior in Adolescents

*Richard Liu*

## TUESDAY, OCTOBER 13, 2015

10:45 AM – 11:00 AM Break  
Location: East Foyer

### Concurrent Oral Sessions

11:00 AM – 12:15 PM **Exploring Psychological Models of Suicidal Behavior**  
Location: Grand Ballroom  
Chair: Rory O'Connor

11:00 AM - 11:15 AM The Integrated Motivational-Volitional (IMV) Model of Suicidal Behaviour: A Structural Equation Modelling Approach  
*Katie Dhingra*

11:15 AM - 11:30 AM The Roles of Perceived Burdensomeness and Depression in the Development of Suicidal Ideation in Individuals with Physical Disabilities  
*Lauren Khazem*

11:30 AM - 11:45 AM How Post-battle Experiences Relate to The Interpersonal-psychological Theory of Suicide in U.S. Army National Guard Sample  
*Rachel Martin*

11:45 AM - 12:00 PM Differentiating Suicide Attempters from Suicide Ideators Using the Integrated Motivational-volitional (IVM) Model of Suicidal Behaviour  
*Daniel Boduszek*

12:00 PM - 12:15 PM Nightmares and Insomnia Predict Suicidality if Interacting with Acquired Capability or Escape  
*Kevin Hochard*

## TUESDAY, OCTOBER 13, 2015

11:00 AM – 12:15 PM

Location:

### **Cognition, Decision-making, and Stress in Suicidal Behavior**

Jade

Chair: John Keilp

11:00 AM - 11:15 AM

Go/No-Go Deficits in Suicidal Behavior and Depression: A Neuroimaging Study

*Stéphane Richard-Devantoy*

11:15 AM - 11:30 AM

The Association Between Impaired Decision Making and Suicide Attempt in a High-risk Sample of Adolescent Offspring of Parents with Depression

*Gemma Hammerton*

11:30 AM - 11:45 AM

Cognitive and Affective Mechanisms of Risk among Suicidal Adults With and Without Substance Abuse

*David Goldston*

11:45 AM - 12:00 PM

Brain/behavior Interactions in Teen Suicide Attempters vs. Those Engaged in Non-suicidal Self-injury

*Daniel Dickstein*

12:00 PM - 12:15 PM

Evidence for the Role of the AKT Serine-threonine Kinase in Resilience to Chronic Stress

*Thomas Franke*



## TUESDAY, OCTOBER 13, 2015

### 11:00 AM – 12:15 PM **Psychosocial and Pharmacological Interventions for Suicidal Individuals**

Location: Basildon  
Chair: Greg Brown

- 11:00 AM - 11:15 AM A Multi-site Randomized Clinical Trial to Reduce Suicidal Ideation in Suicidal Adult Outpatients with Major Depressive Disorder: Development of a Methodology to Enhance Safety  
*William McCall*
- 11:15 AM - 11:30 AM Brief CBT is Effective at Reducing Post-treatment Suicide Attempts: What It Means for Clinical Practice  
*M. David Rudd*
- 11:30 AM - 11:45 AM Family Based Crisis Intervention for Suicidal Adolescents in the Emergency Department: Results of a Randomized Clinical Trial  
*Elizabeth Wharff*
- 11:45 AM - 12:00 PM Differences in Cortisol Response in Suicidal Individuals Following Treatment with Dialectical Behavior Therapy or Pharmacotherapy  
*Sadia Chaudhury*
- 12:00 PM - 12:15 PM Selective Attrition in Treatment Trials with Suicidal Patients May Bias Study Outcomes  
*Marianne Gorlyn*

## TUESDAY, OCTOBER 13, 2015

### 11:00 AM – 12:15 PM **Psychological Autopsy and Epidemiological Findings in Suicide**

Location: Astor Salon  
Chair: Yogesh Dwivedi

11:00 AM - 11:15 AM Data Sources in Psychological Autopsy Research: Assessing the Consistency of Information Obtained Through the Suicide Support and Information System in Ireland

*Celine Larkin*

11:15 AM - 11:30 AM Meta-analysis of Case-control Psychological Autopsy Studies: Focus on Mood and Alcohol Use Disorders

*Kenneth Conner*

11:30 AM - 11:45 AM The Association of Trends in Charcoal-burning Suicide with Google Search and Newspaper Reporting in Taiwan: A Time Series Analysis

*Shu-Sen Chang*

11:45 AM - 12:00 PM Suicide in Islamic Countries: Fact or Artifact?

*Murad Khan*

12:00 PM – 12:15 PM Heavy Alcohol Use Prior to Death among Suicide Decedents and a Population-based Comparison Sample: The Effects of the Great Recession

*Mark Kaplan*

12:15 PM – 1:00 PM Lunch on Own

1:00 PM – 2:30 PM Poster Session II

Location: West Foyer and Grand Ballroom

\*See pages 66 through 70 for a full listing of poster presentations.

### 2:30 PM – 3:30 PM **Reducing Suicide: A Research Perspective**

Location: Grand Ballroom  
Thomas Insel

3:30 PM – 3:45 PM Break

Location: East Foyer

**Concurrent Symposia Sessions**

3:45 PM - 5:00 PM

Location:

**Suicide Risk, Prevention and Response in Vulnerable Older Adults**

Grand Ballroom

Chair: Martha Bruce

Suicide Ideation in Home Healthcare Patients: The Depression Carepath Trial  
*Martha Bruce*

Impact of Shared Decision-making on Elderly Depressed Primary Care Patients with Suicidal Ideation  
*Patrick Raue*

Reducing Depression and Suicide Risk in Vulnerable Older Adults by Improving Links to Mental Health Treatment  
*Jo Anne Sirey*

Suicidal Ideation in Older Adults with Major Depression and Cognitive Impairment  
*Dimitris Kiosses*

3:45 PM - 5:00 PM

Location:

**Studies on Youth Suicidal Ideation and Behaviour in a Life-course Perspective - The Role of Psychiatric Disorders and Related Health Care**

Jade

Chair: Ellenor Mittendorfer-Rutz

When Self-reliance Isn't Safe: Associations Between Reduced Help-seeking and Subsequent Mental Health Symptoms in Suicidal Adolescents  
*Christa Labouliere*

Subtypes of Suicide Attempters Based on Early to Mid Childhood Latent Symptom Profiles of Anxiety, Depression, Concentration Problems and Aggressive, Disruptive Behaviors  
*Holly Wilcox*

Suicide Attempt in Young People: A Signal for Long-term Health Care and Social Needs  
*Sidra Goldman-Mellor*

Medical and Social Determinants of Subsequent Labour Market Marginalisation in Young Suicide Attempters  
*Thomas Niederkrotenthaler*

## TUESDAY, OCTOBER 13, 2015

3:45 PM - 5:00 PM

### **New Directions in Screening Medical Patients for Suicide Risk: STAT-ED, ASQ and Beyond**

Location:

Basildon

Chair: Lisa Horowitz

Moderator: Jane Pearson

Screening for Suicide Risk on a Pediatric Medical Inpatient Unit

*Lisa Horowitz*

Screening and Brief Intervention for Suicidal Youth Identified in the Pediatric Emergency Department Setting

*Jeffrey Bridge*

Screening for Suicide Risk in Adult Medical Inpatients: The ASQ'em Study

*Elizabeth Ballard*

Screening for Suicide in Youth Diagnosed with Developmental Delays, Intellectual Disabilities and Autism Spectrum Disorder

*Lisa Horowitz*

3:45 PM - 5:00 PM

### **Telephone Crisis Lines for Suicide Prevention in the USA**

Location:

Astor Salon

Chair: Wendi Cross

Examining Intervention Fidelity as a Predictor of Crisis Counselor Behaviors with Callers

*Wendi Cross*

Helping Callers to the National Suicide Prevention Lifeline Who Are at Imminent Risk of Suicide: Evaluation of Caller Risk Profiles and Helper Interventions

*Madelyn Gould*

Understanding the Intersectionality Between Intimate Partner Violence and Suicide: Can We Prevent Both Better by Working Together?

*Catherine Cerulli*

Characteristics of Callers to the Department of Veterans Affairs 24/7 Crisis Line

*Kerry Knox*

## WEDNESDAY, OCTOBER 14, 2015

7:30 AM	Morning Coffee	East Foyer
8:00 AM - 9:15 AM	<b>Symposia Session</b> <i>-Biomarkers in Suicide and Suicide Prediction</i> <b>Concurrent Oral Sessions</b> <i>-Differentiating Types of Suicidal Behavior</i> <i>-Genetic, Neurobiological and Neurocognitive Studies of Suicidal Behavior</i> <i>-Innovative Interventions with Suicidal Individuals</i>	Grand Ballroom  Jade Astor Salon  Basildon
9:30 AM - 10:45 AM	<b>Concurrent Oral Sessions</b> <i>-Suicide Attempts and Ideation: Effects of Social and Individual Risk Factors</i> <i>-Suicidal Behavior Across the Lifespan</i> <i>-Approaches to Saving Young Lives</i> <i>-Emotional, Social, and Psychological Contributions to Suicide Risk</i>	Grand Ballroom  Jade Astor Salon Basildon
10:45 AM - 12:45 PM	<b>Poster Session III</b> with Lunch	Grand Ballroom/East & West Foyers
12:45 PM - 1:45 PM	<b>Living Room Discussion:</b> <i>Integrating Psychological Theories and Neurobiological Models of Suicidal Behavior: An Impossible Dream?</i>	Grand Ballroom
1:45 PM	Meeting Adjourns	



7:30 AM Morning Coffee  
Location: East Foyer

### **Symposia Session**

8:00 AM – 9:15 AM **Biomarkers in Suicide and Suicide Prediction**  
Location: Grand Ballroom  
Chair: Douglas Meinecke  
Moderator: Holly Garriock

Multimodality Magnetic Resonance Imaging of Neural Circuitry Associated with Suicide Attempts in Adolescents with Mood Disorders

*Jennifer Johnston*

A Prospective Study of Suicidal Behavior: Higher Dorsal Raphe Nucleus 5HT1A Binding Potential and Medical Lethality

*Maria Oquendo*

Discovery, Replication, and Functional Implications of the SKA2 Epigenetic Biomarker for Suicide

*Zachary Kaminsky*

MicroRNA Profiling in Postmortem Brain and Plasma Exosomes: Biomarker Perspective of Suicidality

*Yogesh Dwivedi*

**Concurrent Oral Sessions**

8:00 AM – 9:15 AM

Location:

**Differentiating Types of Suicidal Behavior**

Jade

Chair: Kelly Posner

8:00 AM - 8:15 AM

An Investigation into the Psychological Characteristics of Self-harm Patients With and Without Suicidal Intent

*Sarah Eschle*

8:15 AM - 8:30 AM

An Investigation into the Relationship Between Self-compassion, Suicidal Ideation and Self-harm

*Seonaid Cleare*

8:30 AM - 8:45 AM

Aborted and Interrupted Suicides: A Literature Review

*Andriy Yur'yev*

8:45 AM - 9:00 AM

Prospective Examination of Peer Victimization as a Mediator of the Relation Between Maternal Depression and the Onset of Suicidal Thinking in Their Children: A Sex-moderated Mediation Model

*Aliona Tsypes*

9:00 AM - 9:15 AM

Attempted Suicide in Sri Lanka – Does Context Matter?

*Duleeka Knipe*



## WEDNESDAY, OCTOBER 14, 2015

8:00 AM – 9:15 AM

### **Innovative Interventions with Suicidal Individuals**

Location:

Basildon

Chair: Michelle Cornette

8:00 AM - 8:15 AM

Two Online Suicide Prevention Programs: Randomised Controlled Trial Data from Healthy Thinking and ibobbly

*Helen Christensen*

8:15 AM - 8:30 AM

The Effectiveness of Psychotherapy in Preventing Suicidal Attempts: A Meta-analysis

*Raffaella Calati*

8:30 AM - 8:45 AM

Mindfulness-based Cognitive Therapy for Preventing Suicide in Veterans (MBCT-S): Design and Implementation of an Ongoing Randomized Clinical Trial

*Alejandro Interian*

8:45 AM - 9:00 AM

An RCT of Motivational Interviewing to Address Suicidal Ideation with Psychiatrically Hospitalized Veterans: Design, Progress, and Lessons Learned

*Peter Britton*

9:00 AM - 9:15 AM

Increasing Post-hospitalization Treatment Engagement among Veterans Through the Home-based Mental Health Evaluation (HOME) Program

*Bridget Matarazzo*

## WEDNESDAY, OCTOBER 14, 2015

### 8:00 AM – 9:15 AM **Genetic, Neurobiological and Neurocognitive Studies of Suicidal Behavior**

Location: Astor Salon  
Chair: Julio Bobes

- 8:00 AM - 8:15 AM Vascular Endothelial Growth Factor (VEGF) in Cerebrospinal Fluid , Childhood Exposure to Interpersonal Violence and Impaired Socialization in Suicide Attempters  
*Jussi Jokinen*
- 8:15 AM - 8:30 AM A Targeted Sequencing Study of Glutamatergic Candidate Genes in Attempted Suicide  
*Sophia Gaynor*
- 8:30 AM - 8:45 AM Association of HTR2C Gene Variants with Suicidal Behavior: A Case-control Study  
*Carlos Alfonso Tovilla Zárate*
- 8:45 AM - 9:00 AM Diurnal Dynamics and Biological Correlates of Suicidal Moments Within Major Depression  
*Eimear Crowe*
- 9:00 AM - 9:15 AM Improvements in Executive Attention, Rumination, Cognitive Reactivity and Mindfulness among High Suicide-Risk Patients Participating in Adjunct Mindfulness-Based Cognitive Therapy  
*Megan Chesin*

**Concurrent Oral Sessions**

9:30 AM – 10:45 AM **Suicide Attempts and Ideation: Effects of Social and Individual Risk Factors**

Location: Grand Ballroom  
Chair: Christine Moutier

9:30 AM - 9:45 AM An Item-based Approach to Assessing Suicide Risk in the Population  
*Philip Batterham*

9:45 AM - 10:00 AM Suicide Literacy and Stigma: Scale Development, Correlates and Association With Help-seeking Attitudes and Intentions  
*Alison Caley*

10:00 AM – 10:15 AM Evaluation of Resting State Functional Connectivity as a Biomarker for Suicidal Behavior  
*Ricardo Caceda*

10:15 AM - 10:30 AM Personality Disorders and Suicide Attempts in Unipolar and Bipolar Mood Disorders  
*Erkki Isometsä*

10:30 AM - 10:45 AM Clarifying Capability: Identifying the Strongest Correlates of Suicide Attempts among Suicide Ideators  
*Alexis May*

## WEDNESDAY, OCTOBER 14, 2015

9:30 AM – 10:45 AM

Location:

### **Suicidal Behavior Across the Lifespan**

Jade

Chair: Jane Pearson

9:30 AM - 9:45 AM

Predicting Non-suicidal Self-injury across 12 Months: The Utility of Assessing (Experiential) Avoidance

*Emma Nielsen*

9:45 AM - 10:00 AM

Suicide Loss and Complicated Grief

*Sid Zisook*

10:00 AM - 10:15 AM

Telehealth Monitoring of Older Veterans with Major Depression and Risk for Suicide

*Gretchen Haas*

10:15 AM - 10:30 AM

Self-disclosed Characteristics which Distinguish Older Adults with Thoughts of Death from Those with Thoughts of Suicide; a Clinical/Epidemiological Investigation

*Gary Kennedy*

10:30 AM - 10:45 AM

Meta-analysis of the Association Between Suicidal Ideation and Later Suicide among Patients With Either a Schizophrenia Spectrum Psychosis or a Mood Disorder

*Matthew Large*

## WEDNESDAY, OCTOBER 14, 2015

9:30 AM – 10:45 AM **Emotional, Social, and Psychological Contributions to Suicide Risk**

Location:

Basildon

Chair: Gil Zalsman

9:30 AM - 9:45 AM Perfectionism and Emotional Pain Sensitivity in Self-harm Ideation and Enactment

*Olivia Kirtley*

9:45 AM - 10:00 AM Social Comparison Processes and Suicidality: An Investigation of the Relationship Between Social Comparisons, Social Rank Variables and Suicidal Ideation

*Karen Wetherall*

10:00 AM - 10:15 AM Investigating the Relationship Between Psychological Processes and Suicidal Ideation in Patients Who Have Self-harmed

*Julie Mansfield*

10:15 AM - 10:30 AM How Well Do the Interpersonal Needs Questionnaire and the Acquired Capability for Suicide Scales Work for Military Veterans?

*Peter Gutierrez*

10:30 AM - 10:45 AM Effects of Mood on Appraisal of Suicidal Intent by People Who Deliberately Self-harm

*Bergljot Gjelsvik*

## WEDNESDAY, OCTOBER 14, 2015

9:30 AM – 10:45 AM **Approaches to Saving Young Lives**

Location: Astor Salon  
Chair: Jill Harkavy-Friedman

9:30 AM - 9:45 AM Effectiveness of Adolescent Life-skills Training in Improving Mental Health and Preventing Suicidal Behavior in Rural Sri Lanka  
*Janaka Pushpakumara*

9:45 AM - 10:00 AM Prevention of Depression and Suicidal Behaviours in School  
*José Santos*

10:00 AM - 10:15 AM SIAM (Suicide Intervention Assisted by Messages): The Development of a Post-acute Crisis Text Messaging Outreach for Suicide Prevention  
*Sofian Berrouiguet*

10:15 AM - 10:30 AM Latent Classes of Childhood and Adolescent Trauma Exposure Predict Suicide Ideation and Attempt in Young Adulthood  
*Kathryn Van Eck*

10:30 AM - 10:45 AM Self-regulation Techniques in the Prevention of Suicide-directed Behavior among Children and Adolescents  
*Anastasia Polunina*

10:45 AM – 12:45 PM Poster Session III with Lunch  
Location: West Foyer and Grand Ballroom  
\*See pages 71 through 75 for a full listing of poster presentations.

12:45 PM – 1:45 PM **Living Room Discussion: Integrating Psychological Theories and Neurobiological Models of Suicidal Behavior: An Impossible Dream?**

Location: Grand Ballroom

Participants: *Thomas Joiner*  
*John Mann*  
*Gil Zalsman*  
*Rory O'Connor*

## POSTERS

### Session I – Monday, October 12, 2015

- M1. **Young Adults and Suicide /or Youth and Suicide. The French Organization, Phare Enfants-Parents, Conducted a Study Involving Parents who Lost a Child or Young Adult to Suicide**  
Thérèse Hannier
- M2. **Examining the Feasibility of Administering the Death/Suicide Implicit Association Test in a Medical Inpatient Setting**  
Daniel Powell, Lisa Horowitz, Elizabeth Ballard, Maryland Pao, Deborah Snyder, Matthew Nock, Catherine Glenn, Jeff Bridge
- M3. **Decision-making in Suicidal Ideators: A Case-control Study**  
Arielle Sheftall, Dustin Davidson, Sandy McBee-Strayer, John Ackerman, Kristen Mendoza, Brady Reynolds, Jeffrey Bridge
- M4. **Stress Reactivity, Life Stress, and Biased Cognitive Responses among Suicide Attempters and Non-attempters**  
Jorge Valderrama, Regina Miranda
- M5. **Timeline Analysis Approach to Military Suicide Case Reviews**  
Laura Armstrong, Christine Glasheen, Christopher Rennix
- M6. **Suicide in Illicit Drug Users Recruited in Drug Treatment Facilities**  
Elisabet Arribas-Ibar
- M7. **Exposure to Childhood Household Dysfunction, and Risk of Violent and Non-violent Self-harm in Young Adults: A Cohort Study of 107,518 Individuals in Stockholm County**  
Emma Bjorkenstam, Kyriaki Kosidou, Charlotte Bjorkenstam
- M8. **Clinical Relevance of the DSM-5 “With Anxious Distress” Specifier: A Risk Indicator for Suicidality?**  
Carla Canuso, Marsha Wilcox, Gayle Wittenberg, Justine Kent
- M9. **The Association of Trends in Charcoal-burning Suicide with Google Search and Newspaper Reporting in Taiwan: A Time Series Analysis**  
Shu-Sen Chang, Simon Kwok, Qijin Cheng, Paul Yip, Ying-Yeh Chen
- M10. **Suicidal Behavior and Non-suicidal Self Injury in Emergency Departments Underestimated by Administrative Claims Data**  
Megan Chesin, Barbara Stanley, Glenn Currier, Sadia Chaudhury, Shari Jager-Hyman, Hanga Galfavy, Gregory Brown

## POSTERS

- M11. **Early Life Adversities, Personality Functioning, and Suicide Risk in Adolescents: Understanding Their Independent and Joint Relationships**  
[Diana Clarke](#)
- M12. **Characteristics of Intentional Self-poisonings in Adolescents Versus Adults in Toxic Case Registry Entries**  
[Kenneth Conner](#), Beau Abar, Vincent Derienzo, Lisham Ashrafioun, Timothy Wiegand
- M13. **Aeroallergens, Air Pollution Exposures and Suicide Rates in Hungary, 2005-2011**  
[Thomas Cook](#), Teodor Postolache, Zoltán Rihmer, Xénia Gonda, Péter Döme
- M14. **Patients Who Screen Positive for Suicide Risk: An Exploratory Study**  
[Laurel Dezieck](#), Edwin Boudreaux
- M15. **How Do Treatments of Depression Effect Suicidal Behaviour in Major Depression?**  
[Andrea Fernandes](#), Robert Stewart, Rina Dutta
- M16. **Exposure to, and Searching for, Information about Suicide and Self-harm on the Internet: Prevalence and Predictors in a Population Based Cohort of Young Adults**  
[Becky Mars](#), Jon Heron, Lucy Biddle, Jenny L. Donovan, Rachel Holley, Martyn Piper, John Potokar, Clare Wyllie, David Gunnell
- M17. **Computational Modeling of Sexual Orientation Within Unlabeled Social Network Data to Inform Suicide Risk Prediction and Targeted Interventions**  
Roghayeh Feizi, Yijun Huang, Ji Liu, Christopher Homan, [Vincent Silenzio](#), Henry Kautz
- M18. **An Analysis of Homicide-suicide in Toronto Using Coroner Records**  
[Mark Sinyor](#), Michelle Messner, Alexander Simpson, Andrew Morgan, Ayal Schaffer
- M19. **Suicides and Medically Serious Attempters Are of the Same Population in Chinese Rural Young Adults**  
[Jie Zhang](#), Long Sun
- M20. **When Aspiration Fails: A Study of Its Effect on Mental Disorder and Suicide Risk**  
[Jie Zhang](#)
- M21. **The Unified Protocol for Suicidality: Acceptability, Feasibility, and Preliminary Efficacy Data from an Acute Crisis Stabilization Unit**  
[Kate Bentley](#), Shannon Sauer-Zavala, Clair Cassiello-Robbins, Laren Conklin, Stephanie Vento



## POSTERS

- M22. **Who Cares? Social Support and Social Network in Major Depression**  
Danielle Broxon, James Overholser, Jennifer Lehmann, Alison Athey, Josephine Ridley
- M23. **Clinical Correlates of Insomnia in Suicide Attempters**  
Sadia Chaudhury, Meghan Michalski, Barbara Stanley
- M24. **Clinical Correlates of Planned and Unplanned Suicide Attempts**  
Sadia Chaudhury, Tanya Singh, M. Elizabeth Sublette, Michael Grunebaum, Barbara Stanley, J. John Mann, Maria Oquendo
- M25. **Can a Rapid Response Social Care Intervention Reduce Future Self Harm and Suicide Attempts? Findings from a Social Work Intervention Following Self Harm (SWISH) in Wales, UK**  
Charlotte Davies, Nilufar Ahmed, Richard Jones, Peter Huxley, Ann John
- M26. **Open Board**
- M27. **Differentiating Groups of Pediatric Emergency Department Patients Based on Reported Suicidal Ideation and Behavior Endorsed on the Behavioral Health Screen**  
Joanna Herres, Tamar Kodish, Tita Atte, Joel Fein, Guy Diamond
- M28. **Suicidality and Depression in Adolescents Treated with Affective Psychotherapy in a Randomized Controlled Study**  
Göran Högberg
- M29. **Life is Precious: A Mixed Methods Evaluation of a Community-based Program to Reduce Suicidal Behavior in Latina Adolescents**  
Jennifer Humensky
- M30. **Suicide among Men Gamblers: Is Burden of Adversity the Same During Life Course Between Living Controls and Suicide Victims?**  
Mélina Andronicos, Guy Beauchamp, Mélanie DiMambro, Marie Robert, Jacques Besson, Monique Séguin
- M31. **Self-rated Expectations of Suicidal Behavior Predict Future Suicide Attempts among Adolescent and Young Adult Psychiatric Emergency Patients**  
Ewa Czyn, Adam Horwitz, Cheryl King

## POSTERS

- M32. **Child Sexual Abuse and Impulsivity Are Independently Associated to an Increase Number of Suicide Attempts among Female Patients**  
Federico Daray, Germán Teti., Sasha Rojas, Ana Bridges, Christal Badour, Leandro Grendas, Demián Rodante, Agustina Fógola, Federico Rebok
- M33. **A Global Burden of Suicide: Suicide Phenotypes among Guyanese Orphans**  
Ellen-ge Denton, Jazmin Mogavero, Nicolina Bolognese
- M34. **Belongingness and Suicidal Ideation among Hispanic/Latino Individuals**  
Christopher R. Hagan, Thomas E. Joiner
- M35. **Borderline Personality Disorder Features, Emotion Regulation, and Nonsuicidal Self-injury in Adolescent Inpatients**  
Claire Hatkevich, Andrea Fossati, Carla Sharp
- M36. **No Way Out: Entrapment as a Moderator of Suicide Ideation among Soldiers**  
Yossi Levi-Belz, Leah Shelef, Eyal Fruchter
- M37. **A New Tool to Behaviorally Assess Fearlessness: The Self-Directed Violence Picture System (SDVPS)**  
Sarra Nazem, Lisa Brenner
- M38. **Exploring the Relationship Between Coping, Experiential Avoidance and the Recency and Frequency of Self-harm**  
Emma Nielsen, Kapil Sayal, Ellen Townsend
- M39. **Racial/Ethnic Discrimination and Risk for Suicidal Behavior: The Mediating Roles of Posttraumatic Stress and Rumination Vary Across Race/Ethnicity**  
Lillian Polanco-Roman, Regina Miranda, Elizabeth Jeglic
- M40. **Family History of Suicide, Exposure to Interpersonal Violence in Childhood and Interpersonal Functioning in Suicide Attempters**  
Mia Rajalin, Tatja Hirvikoski, Ellinor Salander-Renberg, Marie Åsberg, Jussi Jokinen
- M41. **Classification of Facial Expressions of Emotion in Children With and Without a History of Maternal Depression and Suicidal Thinking**  
Aliona Tsypes, Katie Burkhouse, Brandon Gibb
- M42. **Health Care Resources, Family Supports, and Long-term Mental Health Outcomes for Suicidal Adolescents**  
Mary LeCloux, Peter Maramaldi, Kristie Thomas, Elizabeth Wharff

## POSTERS

- M43. **Determination of an Appropriate Days-supply of Medications with the Potential for Misuse, Divergence, and Intentional Overdose Dispensed in Community Pharmacy Practice**  
Christine Leong, Silvia Alessi-Severini, Jitender Sareen, Murray W. Enns, James Bolton
- M44. **Proposal Modelling Tool for Suicide Prevention and Intervention in Five Cities in Colombia**  
Edgar Munoz, Gloria Macias, Maria Gutierrez, Juan Rivas, Francisco Bonilla, Daniel Tobon
- M45. **Disordered Eating Symptomatology and Risk for Suicidal Behavior: The Role of Experiential Avoidance**  
Sasha Rojas, Kayla Skinner, Jennifer Veilleux
- M46. **Friendship, Depression and Suicide Attempts: Exploratory Analysis of a Longitudinal Follow-up Study**  
Julia Marver, Julia, Hanga, Ainsley, Elizabeth, Maria, J. John, Michael
- M47. **Discrepancies Between Parent and Child Reports of Distress and Suicidal Ideation and Mental Health Care Usage**  
Elise Paul
- M48. **Incidence of Completed Suicide in an Epidemiological First Episode Psychosis Cohort: Early Risk Factors and Comparison to Suicide Attempts**  
José M Pelayo-Terán, Yolanda Zapico-Merayo, Rosa Ayesa-Arriola, Elisa García Alcaraz, Begoña Vicente Hernández, Rocío Pérez-Iglesias, Javier David López Morfíngo, Benedicto Crespo-Facorro
- M49. **Active and Passive Problem Solving in the Relation Between Depressive Symptoms and Future Suicidal Ideation**  
Victoria Quinones, Justyna Jurska, Eileen Fener, Regina Miranda
- M50. **Prison Suicide: Theorising Its Regulation**  
Philippa Tomczak
- M51. **Self-poisoning Suicide Deaths in Bipolar Disorder: Characteristics and Comparison of Substances Ingested**  
Ayal Schaffer, Lauren Weinstock, Mark Sinyor, Catherine Reis, Benjamin Goldstein, Anthony Levitt
- M52. **Risk-taking Behavior and Suicidality: The Unique Role of Adolescent Drug Use**  
Brooke Ammerman, Laurence Steinberg, Michael McCloskey

## POSTERS

### Session II – Tuesday, October 13, 2015

- T1. **Suicide by Plastic Bag Asphyxiation With and Without Gassing in Hong Kong 2005-2013: Evidence for the Emergence of Suicide by Helium Inhalation**  
Shu-Sen Chang, Esther Lee, Qijin Cheng, Paul Yip
- T2. **Does Own-group Ethnic Density Protect Against Suicide among Serious Mental Health Disorders?**  
Andrea Fernandes, Javier Lopez-Morinigo, Rina Dutta, Chin-Kuo Chang, Robert Stewart, Richard Hayes
- T3. **Association Between Bullying-victimisation and Suicidality Outcomes in Youth: Results from a Prospective Birth Cohort**  
Michel Boivin, Louise Arseneault, Johanne Renaud, Richard Tremblay, Sylvana Côté, Marie-Claude Geoffroy
- T4. **Insomnia Severity and Subtypes: Predictive Validity of Sleep Disturbance in Treatment Resistant Depression**  
Evan Gilmer, Gustavo Turecki
- T5. **Military Suicide Epidemiology and Analytics in the Department of the Navy**  
Christine Glasheen, Laura Armstrong, Christopher Rennix
- T6. **Analysis of Suspected Suicides by Age Group at the Office of the Medical Examiner**  
Douglas Gray, Hilary Coon, Amanda Bakian, Deborah Yurgelun-Todd, Todd Grey, McGlade Erin, Callor Brandon, Byrd Joshua
- T7. **The Course and Predictors of Non-suicidal Self-injury and Deliberate Self-harm: A Systematic Review of Longitudinal Studies**  
Rebecca Groschwitz, Paul, Teresa, Lara
- T8. **Sleep Disturbance and Attempted Suicide in Rural China: A Case-control Study**  
Cun-Xian Jia, Wen-Chao Zhang, Li Wei, Ji-Yu Zhang, Xian-Chen Liu
- T9. **Gender Differences in Factors Associated with Suicidality among an Elderly Community Sample in South Korea**  
Sangha Kim, Kounseok Lee, Jun Won Kim, Hye Jin Seo, Won-Myong Bahk
- T10. **Association of Socio-economic Position and Suicide/attempted Suicide in Low and Middle Income Countries in South and South-East Asia – A Systematic Review**  
Duleeka Knipe, Robert Carroll, Kyla Thomas, Anna Pease, David Gunnell, Chris Metcalfe

## POSTERS

- T11. **Meta-analysis of the Association Between Suicidal Ideation and Later Suicide among Patients with Either a Schizophrenia Spectrum Psychosis or a Mood Disorder**  
Matthew Large
- T12. **Meta-analysis of Suicide Rates among Psychiatric In-patients**  
Matthew Large
- T13. **Using Data Linkage to Investigate Inconsistent Reporting of Self-harm and Questionnaire Non-response**  
Becky Mars, Rosie Cornish, Jon Heron, Andy Boyd, Catherine Crane, Keith Hawton, Glyn Lewis, Kate Tilling, John Macleod, David Gunnell
- T14. **Suicidal Behaviour among Patients with a First-episode Psychosis in a 3-year Follow-up: Timing Patterns and Stage-related Risk Factors**  
Rosa Ayesa-Arriola, Javier David Lopez Morinigo, Jose Maria Pelayo Teran, Rocio Perez-Iglesias, Anthony S. David, Benedicto Crespo-Facorro
- T15. **Using Text Messages to Predict Depression and Suicidal Behavior among LGBT Individuals**  
Megan Lytle, Vincent Silenzio, Cecilia Ovesdotter Alm, Christopher Homan
- T16. **The Intraurban Geography of Suicide in Toronto**  
Mark Sinyor, Richard Maaranen, Shauna Brail, Ayal Schaffer
- T17. **Exploring Genetic Risk Factors that Interact with Short-term Ambient Air Pollution Exposure to Increase Suicide Risk**  
Amanda Bakian, Brian Robison, Todd Darlington, Jim VanDerslice, Yue Zhang, Doug Gray, Todd Grey, Brandon Callor, Perry Renshaw, Rebekah Huber, Leslie Jerominski, Brian Dalley, Michael Klein, Nicola Camp, Rob Sargent, Hilary Coon
- T18. **Genetic Risk for Suicide in a High Risk Extended Family with Unusually High Rate of Female Suicide**  
Hilary Coon, Todd Darlington, W. Brandon Callor, Richard Pimentel, Rob Sargent, Venkatesh Rajamanickham, Shruti Muralidhar, Leslie Jerominski, Brian Dalley, Michael Klein, Jeff Cardon, Nate Hansen, Sheila Crowell, Amanda Bakian, Ken Smith, Hao Hu, Chad Huff, Megan Williams, Nicola Camp, Todd Grey, Douglas Gray
- T19. **Rare Exome Variation in Suicide Decedents: Neuronal Signaling and Synaptic Structure Genes**  
Todd Darlington, Shruti Muralidhar, Nancy William, Rob Sargent, Jeff Cardon, Leslie Jerominski, W. Brandon Callor, Todd Grey, Douglas Gray, Nicola Camp, Megan Williams, Hilary Coon

## POSTERS

- T20. **A Gene-environment Interaction Study of Childhood Sexual Trauma and the Dopamine D4 Receptor (DRD4) Predicting Suicidal Thoughts and Behaviors in Adolescents**  
Jim Doorley, Travis Mallard, Caitlin Williams, Christianne Esposito-Smythers
- T21. **Open Board**
- T22. **Polygenic Risk Score Analysis of Suicidal Behavior Severity in Bipolar Disorder**  
Clement Zai, Arun Tiwari, Vincenzo de Luca, John Vincent, James Kennedy
- T23. **Evaluation of Resting State Functional Connectivity as a Biomarker for Suicidal Behavior**  
Ricardo Caceda, Andrew James, Zachary Stowe, Bettina Knight, Clint Kilts
- T24. **Opportunities and Challenges: Exploring a Public Health Approach to Suicide Prevention in Rural Communities**  
John Cutcliffe, Jose Carlos Sanots
- T25. **Open Board**
- T26. **Interaction Between Multiple Forms of Bullying and Depression Predicts Suicidality in Youth**  
Tamar Kodish, Joanna Herres, Annie Shearer, Helen Squitieri, Tita Atte, Guy Diamond
- T27. **Family Support and Mental Health Service Use among Suicidal Adolescents**  
Mary LeCloux, Peter Maramaldi, Kristie Thomas, Elizabeth Wharff
- T28. **The Suicide Ideation and Behavior Assessment Tool: Development of a Novel Measure of Suicidal Ideation and Behavior and Perceived Risk of Suicide**  
Larry Alphas, Carla Canuso, David Williamson
- T29. **Evaluation of a Suicide Prevention Gatekeeper Training on an American Indian Reservation**  
Mary Cwik, Lauren Tingey, Alexandra Maschino, Kyle Hill
- T30. **Prevalence and Correlates of Mental Health Care Service Utilization among a National Sample of Firefighters Reporting Career Suicide Ideation, Plans, and Attempts**  
Melanie Hom, Ian Stanley, Fallon Moberg, Thomas Joiner
- T31. **Epigenetic Regulation of the Amygdala by Childhood Maltreatment and Suicide**  
Pierre-Eric Lutz, Stephan Busche, Laura Fiori, Jennie Yang, Raphaël Poujol, Alpha Diallo, Naguib Mechawar, Carl Ernst, Tomi Pastinen, Gustavo Turecki
- T32. **Suicidal Behavior in Veterans Correlates with Brain Glutamate Levels**  
Colin Riley

## POSTERS

- T33. **Cortisol Response Predicts Magnitude of Suicide Ideation Increases to Life Events**  
Sadia Chaudhury, Hanga Galfalvy, Barbara Stanley
- T34. **Identifying Emotional States in Individuals Immediately Following a Suicide Attempt**  
Sadia Chaudhury, Megan Chesin, Taylor Burke, Barbara Stanley
- T35. **Effectiveness of Adjunct Mindfulness-based Cognitive Therapy to Prevent Suicidal Behavior (MBCT-S) in Outpatients Who Are at Elevated Suicide Risk: Findings from a Pilot Study**  
Megan Chesin, Beth Brodsky, Alejandro Interian, Anna Kline, Miriam Latorre, Barbara Stanley
- T36. **Lessons Learned about Suicide Prevention and Patient Safety from a Medication Packaging Intervention**  
Peter Gutierrez, Lisa Brenner, Hal Wortzel, Jeri Forster, Rebecca Leitner
- T37. **A Pilot Intervention to Reduce Depressive Symptoms and Suicidal Behaviors of Young Asian American Women**  
Hyeouk Hahm, Aileen Lee, Christina Lee, Michelle Tagerman, Mihoko Maru
- T38. **Open Board**
- T39. **The Internal Struggle Hypothesis of Suicide and Qualitative Reasons for Living and Reasons for Dying**  
Keith Jennings, David Jobes, Stephen O'Connor, Aaron Beck, Gregory Brown
- T40. **Suicide Risk Parameters in the Prediction of Self-reported Sleep Disturbances**  
Joanne Kim, Kiara Timpano, Thomas Joiner, Rebecca Bernert
- T41. **Studying the Most At-risk Populations: Lessons Learned from a Clinical Trial of Bipolar Patients with Suicidal Ideation and Behavior**  
Rebecca Montana, Stephanie Salcedo, Thilo Deckersbach, Andrew Nierenberg, Louisa Sylvia
- T42. **Social Media and Suicide Prevention**  
Jo Robinson, Eleanor Bailey, Georgie Cox, Sarah Hetrick, Maria Rodrigues, Steve Fisher, Helen Herrman, Matt O'Donnell
- T43. **Meaning-centered Men's Groups for Men Facing Retirement: An Upstream Intervention to Decrease Risk for Onset of Suicide Ideation**  
Marnin Heisel, Gordon Flett, Paul Links, Ross Norman, Sisira Sarma, Sharon Moore, Norm O'Rourke, Rahel Eynan, Kim Wilson, Paul Fairlie, Beverly Farrell, Kristan Harris, Michelle Kerr, Bonnie Schroeder

## POSTERS

- T44. **The Development and Initial Validation of the Brief Adolescent Suicide Ideation Scale (BASIS)**  
Marni Heisel, Sandra Fisman, Julie Eichstedt, Stephanie Rabenstein, Heather Jacques, Kerry Collins, Devita Singh, Carlie Kramer, Brenda Davidson, Gina Bhullar, Paige Ethridge, Rahel Eynan, Gordon Flett
- T45. **Associations Between Perceived Criticism and Suicide Ideation and Attempts**  
Christopher Hagan, Thomas Joiner
- T46. **Dating Violence Victimization, Nonsuicidal Self-injury, and the Moderating Effect of Borderline Features in Adolescent Inpatients**  
Claire Hatkevich, William Mellick, Tyson Reuter, Jeff Temple, Carla Sharp
- T47. **Proactive Screening for Suicide Prevention**  
Newton Howard, Louis Jehel
- T48. **The Development, Implementation, and Evaluation of a Comprehensive Course on Suicide Within a Social Work Curriculum**  
Kimberly O'Brien, Joanna Almeida, Emma Gross, Christina Girona
- T49. **Recovery from Self-harm in Looked-after Young People: Which Supports and Clinical Services Help?**  
Ellen Townsend, Ruth Wadman, David Clarke, Kapil Sayal, Panos Vostanis, Marie Armstrong, Caroline Harroe, Pallab Majumder, Chelsea Sawyer, Alex Berry
- T50. **A Comparison of the “Lived Experience” of Self-harm in Young People With and Without Experience of Foster or Residential Care: A Synthesis of Qualitative Interviews With Two Groups**  
Ruth Wadman, Marie Armstrong, David Clarke, Caroline Harroe, Pallab Majumder, Kapil Sayal, Panos Vostanis, Ellen Townsend
- T51. **Frequency of Suicide Attempts among Female Patients Admitted for Suicidal Behavior: The Influence of Family History of Suicidal Behavior**  
Sasha Rojas, Demian Rodante, Courtney Dutton, Matthew Feldner, Federico Rebok, German Teti, Agustina Fógola, Federico Daray
- T52. **Lifetime Suicidal Ideation, Perceived Parental Love and Family Structure in Childhood: A Cross-sectional Study in the National Comorbidity Survey Replication**  
Ryoko Susukida, Holly Wilcox, Tamar Mendelson



## POSTERS

### Session III – Wednesday, October 14, 2015

- W1. **Suicide in the Oldest Old: An Observational Study and Cluster Analysis**  
Mark Sinyor, Lynnette Pei Lin Tan, Ayal Schaffer, Damien Gallagher, Kenneth Shulman
- W2. **One Year Follow-up of Patients Admitted at the Emergency Room for Suicidal Attempts**  
Carles Masip, M. Paz Flores, Carme Masferrer, Jordi Coletas, Victor Perez-Sola
- W3. **Is Transition to Permanent Work Disability in Young People Associated with Changes in Risk of Attempted Suicide?**  
Ellenor Mittendorfer-Rutz, Kristina Alexanderson, Hugo Westerlund, Theis Lande
- W4. **Suicide in Bosnia and Herzegovina and the City of Sarajevo with Special Reference to Ethnicity**  
Emina Music, Lars Jacobsson, Ellinor Salander Renberg
- W5. **Suicidal Gestures in Adolescents and Young Adults: Evidence from Clinical and Community Samples**  
Paul Plener, Rebecca Groschwitz
- W6. **Conversion of Qualitative Case Notes into Quantitative Data in Suicide Surveillance**  
Beth Poitras, Christine Glasheen, Christopher Rennix
- W7. **Who Receives a Diagnosis of Suicide Attempt in Clinics? – An Investigation of the National Patient Data from Norway**  
Ping Qin, Lars Mehlum
- W8. **Predictors of Suicide Classification among Drug-intoxication Deaths: A State-level Analysis**  
Ian Rockett, Gerald Hobbs, Dan Wu, Haomiao Jia, Kurt Nolte, Gordon Smith, Sandra Putnam, Eric Caine
- W9. **Open Board**
- W10. **Methods of Non-suicidal Self-injury: Their Functions and Relationship to Suicide**  
Magdalen Schluter, Sarah Victor, David Klonsky
- W11. **A Critical Review of the Use of Administrative Data to Study Suicide Bereavement Health Outcomes**  
Rae Spiwak, Brenda Elias, James Bolton, Mariette Chartier, Jitender Sareen

## POSTERS

- W12. **Career Prevalence and Correlates of Suicidal Thoughts and Behaviors among Firefighters: Results from a National Survey**  
Ian Stanley, Melanie Hom, Christopher Hagan, Thomas Joiner
- W13. **Open Board**
- W14. **Increase in Suicide Rates by Hanging in Mexican Population, 2003-2012**  
Carlos Alfonso Tovilla Zárate, Alicia González-Ramón, Isela Juárez-Rojop, Crystell Guzman, Lilia López-Naravez, Sherezada Pool-Garcia, Teresa Ramón Frías, Deysi Bermudez-Ocaña, Ariadna Pérez-Dagdag, Mariana Tosca Iglesias Tosca Iglesias
- W15. **Behavioral Inhibition as a Risk Factor for Lifetime Suicide Attempt. Findings from a Representative Community Sample of Adolescents and Young Adults**  
Catharina Voss, Eva Asselmann, Hans-Ulrich Wittchen, Roselind Lieb, Beesdo-Baum Katja
- W16. **Trajectories of Work Disability Prior to Suicide**  
Mo Wang, Charlotte Björkenstam, Kristina Alexanderson, Bo Runeson, Petter Tinghög, Ellenor Mittendorfer-Rutz
- W17. **A Qualitative Inquiry into Young People's Views on Suicide and on Connectedness to the Community in an Area of Northern Ireland: Creative Endeavours and Challenges**  
Trisha Forbes
- W18. **Open Board**
- W19. **Open Board**
- W20. **Meaningful Involvement of Young People with Lived Experience of Self-harm in Research: Ethical and Methodological Implications**  
Ellen Townsend, Ruth Wadman, David Clarke, Kapil Sayal, Panos Vostanis, Marie Armstrong, Caroline Harroe, Pallab Majumder, Chelsea Sawyer, Alex Berry
- W21. **Open Board**
- W22. **Suicide Risk and Eating Disorders: Youth in Primary Care**  
Jody Russon, Janell Mensinger, Guy Diamond, Suzanne Levy, Tita Atte
- W23. **Suicide and 'Suicide' Bombing: Do They Have a Common Pathway?**  
Murad Khan

## POSTERS

- W24. **Attitude of Psychotherapists Toward Suicide Prevention: Effect of Training for Suicide Prevention**  
Shizuka Kawamoto, Daisuke Kawashima, Keisuke Shiraga, Kenji Kawano
- W25. **Development a Scale for Evaluation of Suicide Prevention Education**  
Kenji Kawano, Shizuka Kawamoto, Daisuke Kawashima, Sachiko Syojima, Keisuke Shiraga, Yotaro Katsumata
- W26. **Mental Health in Higher Education. Prevention of Suicidal Behaviors**  
José Santos, John Cutcliffe, Cândida Loureiro, Carlos Dias, Rosa Simões, Sónia Cunha Leal, Joana Pinto, Rita Ferreira, Carla Pacheco
- W27. **Impact of Websites on Suicide Prevention on Users' Suicidal Ideation and Their Knowledge about Suicide**  
Benedikt Till, Ulrich S. Tran, Thomas Niederkrotenthaler
- W28. **Suicidal Ideation and Intent among Young Asian-American Women Using Columbia-Suicide Severity Rating Scale (C-SSRS)**  
Hyeouk Hahm, Julie Petersen, Min Kim, Elaine Choe
- W29. **Preventing Suicide in Schools: An Evaluation of the Safetalk Program in the Northern Territory**  
Jo Robinson, Karen Reval, Eleanor Bailey, Alex Parker, Matt Spittal, Jane Pirkis, Madelyn Gould, Alan Woodward
- W30. **Insomnia Diagnostic Subtypes as a Predictor of Suicidal Symptom Severity, Depressive Symptoms, and Insomnia Severity**  
Amanda Moskowitz, Naomi Iwata, Joanne Kim, Rebecca Bernert
- W31. **Differences in Parenting Behaviors for Mothers of Suicidal Versus Nonsuicidal Adolescents**  
Megan Puzia, Erin Kauffman, Sheila Crowell
- W32. **Motivators and Influences on American Indian Adolescent Alcohol Use: A Qualitative Case Control Study**  
Lauren Tingey, Mary Cwik, Novalene Goklish, Francene Larzelere-Hinton, Angelita Lee, Rosemarie Suttle, Rachel Chambers, Allison Barlow
- W33. **Family-based Psychosocial Treatment for Suicide Prevention in Pediatric Bipolar Disorder (PBD)**  
Sally Weinstein, Rick Cruz, Amy West

## POSTERS

- W34. **Interpersonal Sensitivity as a Mediator of the Association Between Peer Victimization and Suicidal Ideation**  
Caitlin Williams, James Doorley, Christianne Esposito-Smythers
- W35. **Testing the Feasibility, Usability, and Acceptability of a Smartphone Application Intervention for Suicidal Adolescents**  
Kimberly O'Brien, Mary LeCloux, Christina Girona, Abigail Ross, Elizabeth Wharff
- W36. **Anxiety Moderation of SSRI Versus Bupropion Effects on Suicidal Depression: Exploratory Analysis of an 8-Week Clinical Trial**  
Sadia Chaudhury, Julia Marver, Steven Ellis, Ainsley Burke, Maria Oquendo, J. John Mann, Michael Grunebaum
- W37. **The Effectiveness of Psychotropic Medications on Suicidal Ideation in Schizophrenia Patients**  
Vincenzo De Luca, Ahmed Hassan
- W38. **Long-term Antipsychotics Use in Delusional Disorder with Suicidal Ideation. Case Report**  
Carlos Rodriguez Gomez-Carreño
- W39. **Open Board**
- W40. **Predicting Suicide Attempts among Young Adults with Suicidal Ideation: The Roles of Hopelessness and Psychotic Experiences**  
Jordan DeVlyder, Matthew Hilimire
- W41. **Measuring Change In Suicidal Ideation During An EMA Study In Borderline Personality Disorder Patients**  
Hanga Galfalvy, Sadia Chaudhury, Barbara Stanley
- W42. **Is There a Relationship Between Suicidal Intent and Lethality in Deliberate Self-poisoning?**  
Bergljot Gjelsvik, Fridtjof Heyerdahl, Daniel Lunn, Jane Holmes, Keith Keith
- W43. **Screening for Suicide Risk in Adult Medical Inpatients**  
Lisa Horowitz
- W44. **The Interactive Effects of Major Depressive Episodes and the Acquired Capability for Suicide on Suicidal Behavior in a Military Sample**  
Christopher Hagan, Carol Chu, Matthew Podlogar, Jennifer Buchman, Caroline Silva, Bruno Chiurliza, Jennifer Hames, Ian Stanley, Thomas Joiner

## POSTERS

- W45. **Suicidal Ideation and Intent, Episodic Life Stress, and Borderline Features in Adolescent Inpatients with Major Depression and Comorbid Borderline Personality Disorder**  
Claire Hatkevich, William Mellick, Victor Wasserman, Amanda Venta, Carla Sharp, Iram Kazimi
- W46. **Does Depression Screening Identify Adult Medical Inpatients at Risk for Suicide?**  
Daniel Powell, Lisa Horowitz, Maryland Pao, Deborah Snyder, Elizabeth Ballard, Jeff Bridge, Edwin Boudreaux
- W47. **Somatic Inpatient Care Preceding Admission for Deliberate Self-harm among Young People**  
Hans Idenfors, Lotta Strömsten, Ellinor Salander Renberg
- W48. **Parental Grief after Offspring Suicide and Adaptation to the Loss: What Can Reduce Distress?**  
Daisuke Kawashima, Shizuka Kawamoto, Kenji Kawano
- W49. **Ethnic Differences in Cognitive Correlates of Suicidal Ideation among South Asian American Emerging Adults**  
Robert Lane, Soumia Cheref, Regina Miranda



## AUTHOR INDEX

Abar, Beau	62	Bonilla, Francisco	65
Ackerman, John	61	Boudreaux, Edwin	9, 35, 36, 62, 75
Ahmed, Nilufar	63	Boyd, Andy	67
Albert, Paul	43	Brail, Shauna	67
Alcaraz, Elisa García	65	Brandon, Callor	66
Alessi-Severini, Silvia	65	Breen, Marie	22
Alexanderson, Kristina	71, 72	Brenner, Lisa	9, 34, 64, 69
Alm, Cecilia Ovesdotter	67	Brent, David	5, 9, 25, 44
Almeida, Joanna	70	Bridge, Jeffrey	44, 50, 61, 75
Alphs, Larry	68	Bridges, Ana	64
Ammerman, Brooke	65	Britton, Peter	55
Andronicos, Mélina	63	Brodsky, Beth	69
Anestis, Michael	23	Brown, Gregory	9, 20, 43, 47, 61, 69
Apter, Alan	9, 29	Broxon, Danielle	63
Arango, Victoria	9	Bruce, Martha	49
Arensman, Ella	9, 35	Buchman, Jennifer	74
Armstrong, Laura	61, 66	Burke, Ainsley	74
Armstrong, Marie	70, 72	Burke, Taylor	69
Arribas-Ibar, Elisabet	61	Burkhouse, Katie	64
Arseneault, Louise	66	Busche, Stephan	68
Åsberg, Marie	64	Caceda, Ricardo	57, 68
Ashrafioun, Lisham	62	Caine, Eric	9, 23, 30, 71
Asselmann, Eva	72	Calati, Raffaella	55
Athey, Alison	63	Calear, Alison	57
Atte, Tita	37, 63, 68, 72	Callor, W. Brandon	67
Ayesa-Arriola, Rosa	65, 67	Camp, Nicola	67
Baca-Garcia, Enrique	9, 36	Canuso, Carla	61, 68
Badour, Christal	64	Cardon, Jeff	67
Bahk, Won-Myong	66	Carli, Vladimir	24
Bailey, Eleanor	69, 73	Carroll, Robert	66
Bakian, Amanda	66, 67	Cassello-Robbins, Clair	62
Ballard, Elizabeth	36, 50, 61, 75	Cerulli, Catherine	50
Barlow, Allison	73	Chambers, Rachel	73
Batterham, Philip	57	Chang, Chin-Kuo	66
Beauchamp, Guy	63	Chang, Shu-Sen	48, 61, 66
Beautrais, Annette	9	Chartier, Mariette	71
Beck, Aaron	69	Chaudhury, Sadia	47, 61, 63, 69, 74
Behera, Chittaranjan	22	Chen, Ying-Yeh	61
Benabarre, Antoni	9, 30	Cheng, Qijin	61, 66
Ben-Efraim, Yair	34	Cheref, Soumia	75
Bentley, Kate	62	Chesin, Megan	56, 61, 69
Berman, Lanny	25	Chiurliza, Bruno	74
Bermudez-Ocaña, Deysi	72	Choe, Elaine	73
Bernert, Rebecca	69, 73	Christensen, Helen	9, 55
Berrouguet, Sofian	60	Chu, Carol	74
Berry, Alex	70, 72	Cisneros, Castulo	9
Besson, Jacques	63	Clarke, David	70, 72
Bhullar, Gina	70	Clarke, Diana	62
Biddle, Lucy	62	Clayton, Paula	34
Björkenstam, Charlotte	31, 61, 72	Cleare, Seonaid	54
Bjorkenstam, Emma	61	Clive, Makena	22
Blosnich, John	44	Coletas, Jordi	71
Bobes, Julio	56	Collins, Kerry	70
Boduszek, Daniel	45	Comtois, Katherine	31
Boivin, Michel	66	Conklin, Laren	62
Boldrini, Maura	22	Conner, Kenneth	48, 62
Bolognese, Nicolina	64	Conwell, Yeates	9, 34
Bolton, James	65, 71	Cook, Thomas	62

## AUTHOR INDEX

Coon, Hilary	66, 67	Esposito-Smythers, Christianne	42, 68, 74
Cordoba, Rodrigo	9	Ethridge, Paige	70
Cornette, Michelle	55	Eynan, Rahel	69, 70
Cornish, Rosie	67	Fairlie, Paul	69
Côté, Sylvana	66	Farber, Gregory	32
Courtet, Philippe	9, 34, 41	Farrell, Beverly	69
Cox, Georgie	69	Fein, Joel	63
Crane, Catherine	67	Feizi, Roghayeh	62
Crespo-Facorro, Benedicto	65, 67	Feldner, Matthew	70
Cross, Wendi	50	Fener, Eileen	65
Crowe, Eimear	56	Fernandes, Andrea	62, 66
Crowell, Sheila	67, 73	Ferreira, Rita	73
Cruz, Rick	73	Fiori, Laura	68
Cuijpers, Pim	43	Fisher, Steve	69
Currier, Glenn	61	Fisman, Sandra	70
Cutcliffe, John	68, 73	Flett, Gordon	69, 70
Cwik, Mary	24, 68, 73	Flores, M. Paz	71
Czyz, Ewa	63	Fógola, Agustina	64, 70
Dalley, Brian	67	Forbes, Trisha	72
Daray, Federico	64, 70	Forster, Jeri	69
Darlington, Todd	67	Fossati, Andrea	64
David, Anthony S.	67	Franke, Thomas	46
Davidson, Brenda	70	Franklin, Joseph	42
Davidson, Dustin	61	Frías, Teresa Ramón	72
Davies, Charlotte	63	Fruchter, Eyal	34, 64
Deckersbach, Thilo	69	Galfalvy, Hanga	61, 69, 74
De Leo, Diego	9, 41	Gallagher, Damien	71
De Luca, Vincenzo	68, 74	Garriock, Holly	32, 44, 53
Denton, Ellen-ge	64	Gaynor, Sophia	56
Derienzo, Vincent	62	Gebbia, Robert	9
Desmet, Bart	23	Geoffroy, Marie-Claude	66
DeVylder, Jordan	74	Gibb, Brandon	64
Dezieck, Laurel	62	Gibbons, Robert	11, 25
Dhingra, Katie	45	Gilmer, Evan	66
Diallo, Alpha	68	Gironda, Christina	70, 74
Diamond, Guy	37, 63, 68, 72	Gjelsvik, Bergljot	59, 74
Dias, Carlos	73	Glasheen, Christine	61, 66, 71
Dickstein, Daniel	46	Glenn, Catherine	61
Diekstra, René FW	9	Goklish, Novalene	73
DiMambro, Mélanie	63	Goldman-Mellor, Sidra	49
Dombrowski, Alexandre	37	Goldney, Bob	9
Döme, Péter	62	Goldney, Robert	9
Donaldson, Zoe	43	Goldstein, Benjamin	65
Donovan, Jenny L.	62	Goldston, David	44, 46
Doorley, James	74	Gomez-Carreño, Carlos Rodriguez	74
Doorley, Jim	68	Gonda, Xénia	62
Dutta, Rina	62, 66	González, Lilia	9
Dutton, Courtney	70	González-Ramón, Alicia	72
Dwivedi, Yogesh	36, 41, 48, 53	Gorlyn, Marianne	47
Eck, Kathryn Van	60	Gould, Madelyn	9, 30, 50, 73
Eichstedt, Julie	70	Gray, Douglas	66, 67
Elias, Brenda	71	Greden, John	9
Ellis, Steven	74	Grendas, Leandro	64
Enns, Murray W.	65	Grey, Todd	66, 67
Erin, McGlade	66	Groschwitz, Rebecca	66, 71
Erlangsen, Annette	9, 24, 44	Gross, Emma	70
Ernst, Carl	68	Grumet, Julie Goldstein	37
Eschle, Sarah	54	Grunebaum, Michael	63, 74



## AUTHOR INDEX

Gunnell, David	9, 23, 62, 66, 67	Jacobsson, Lars	71
Gutierrez, Maria	65	Jacques, Heather	70
Gutierrez, Peter	9, 31, 59, 69	Jager-Hyman, Shari	61
Guzman, Crystell	72	James, Andrew	68
Gvion, Yari	37	Jeglic, Elizabeth	64
Haas, Ann	44	Jehel, Louis	70
Haas, Gretchen	58	Jennings, Keith	69
Hadlaczky, Gergo	37	Jerominski, Leslie	67
Hagan, Christopher R.	64, 70, 72, 74	Jia, Cun-Xian	66
Hahm, Hyeouk	69, 73	Jia, Haomiao	71
Hames, Jennifer	74	Jobes, David	9, 20, 43, 69
Hammerton, Gemma	46	Joe, Sean	31
Hannier, Thérèse	61	John, Ann	63
Hansen, Nate	67	Johnston, Jennifer	53
Harkavy-Friedman, Jill	9, 19, 41, 44, 60	Joiner, Thomas E.	9, 29, 42, 60, 64, 68, 69, 70, 72, 74
Harris, Kristan	69	Jokinen, Jussi	56, 64
Harroe, Caroline	70, 72	Jollant, Fabrice	32
Hassan, Ahmed	74	Jones, Richard	63
Hatkevich, Claire	64, 70, 75	Joshua, Byrd	66
Hawton, Keith	9, 19, 35, 67	Júarez-Rojop, Isela	72
Hayes, Richard	66	Jurska, Justyna	65
Heeringen, Kees van	9, 41	Kaess, Michael	23
Hegerl, Ulrich	9	Kaminsky, Zachary	53
Heisel, Marnin	69, 70	Kaplan, Mark	48
Hernández, Begoña Vicente	65	Kapur, Nav	9
Heron, Jon	62, 67	Karras, Elizabeth	23
Herres, Joanna	37, 63, 68	Kaslow, Nadine	31
Herrman, Helen	69	Katja, Beesdo-Baum	72
Hetrick, Sarah	69	Katsumata, Yotaro	73
Heyerdahl, Fridtjof	74	Kauffman, Erin	73
Hilimire, Matthew	74	Kautz, Henry	62
Hill, Kyle	68	Kawamoto, Shizuka	73, 75
Hirvikoski, Tatja	64	Kawano, Kenji	73, 75
Hobbs, Gerald	71	Kawashima, Daisuke	73, 75
Hochard, Kevin	45	Kazimi, Iram	75
Hoffmire, Claire	24	Keane, Lynn	19, 38
Högberg, Göran	63	Keilp, John	32, 46
Holley, Rachel	62	Keith, Keith	74
Holloway, Marjan	9	Kennedy, Gary	58
Holmes, Jane	74	Kennedy, James	68
Hom, Melanie	68, 72	Kent, Justine	61
Homan, Christopher	62, 67	Kerbrat, Amanda	31
Horowitz, Lisa	50, 61, 74, 75	Kerr, Michelle	69
Horwitz, Adam	63	Khan, Murad	48, 72
Howard, Newton	70	Khazem, Lauren	45
Hu, Hao	67	Kilts, Clint	68
Huang, Yijun	62	Kim, Joanne	69, 73
Huber, Rebekah	67	Kim, Jun Won	66
Huff, Chad	67	Kim, Min	73
Humensky, Jennifer	63	Kim, Sangha	66
Huxley, Peter	63	King, Cheryl	9, 41, 63
Idenfors, Hans	75	Kiosses, Dimitris	49
Iglesias, Mariana Tosca	72	Kirtley, Olivia	59
Insel, Thomas	12, 48	Klein, Michael	67
Interian, Alejandro	55, 69	Kline, Anna	69
Ionescu, Dawn	36	Klonsky, E. David	9, 29, 33, 71
Isometsä, Erkki	9, 36, 57	Knight, Bettina	68
Iwata, Naomi	73		

## AUTHOR INDEX

Knipe, Duleeka	54, 66	Marver, Julia	65, 74
Knox, Kerry	50	Maschino, Alexandra	68
Kodish, Tamar	63, 68	Masferrer, Carme	71
Kosidou, Kyriaki	61	Masip, Carles	71
Kramer, Carlie	70	Matarazzo, Bridget	55
Kwok, Simon	61	May, Alexis	57
Labouliere, Christa	49	McBee-Strayer, Sandy	61
Lande, Theis	71	McCall, William	47
Lane, Robert	75	McCloskey, Michael	65
Large, Matthew	58, 67	Mechawar, Naguib	43, 68
Larkin, Celine	48	Mehlum, Lars	9, 20, 41, 71
Larzelere-Hinton, Francene	73	Meinecke, Douglas	53
Latorre, Miriam	69	Mellick, William	70, 75
Leal, Sónia Cunha	73	Mendelson, Tamar	70
LeCloux, Mary	64, 68, 74	Mendoza, Kristen	61
Lee, Aileen	69	Mensingher, Janell	72
Lee, Angelita	73	Messner, Michelle	62
Lee, Christina	69	Metcalfe, Chris	66
Lee, Esther	66	Michalski, Meghan	63
Lee, Kounseok	66	Miller, Ivan	35
Lehmann, Jennifer	63	Miller, Matthew	9
Leitner, Rebecca	69	Miranda, Regina	33, 61, 64, 65, 75
Leong, Christine	65	Mittendorfer-Rutz, Ellenor	49, 71, 72
Levi-Belz, Yossi	24, 64	Moberg, Fallon	68
Levitt, Anthony	65	Mogavero, Jazmin	64
Levy, Suzanne	72	Montana, Rebecca	69
Lewis, Glyn	67	Moore, Sharon	69
Lezine, DeQuincy	38	Morgan, Andrew	62
Lieb, Roselind	72	Moríñigo, Javier David López	65, 67
Linehan, Marsha	43	Morthorst, Britt	24
Links, Paul	69	Moskowitz, Amanda	73
Liu, Ji	62	Moutier, Christine	9, 19, 30, 57
Liu, Richard	33, 44	Munoz, Edgar	65
Liu, Xian-Chen	66	Muralidhar, Shruti	67
Lledo, Eva Peñas	34	Murrough, James	36
Lonnqvist, Jouko	9	Music, Emina	71
Lopez, Carlos	9	Nazem, Sarra	64
Lopez-Morinigo, Javier	66	Nemeroff, Charles	9, 41
López-Naravez, Lilia	72	Niederkrotenthaler, Thomas	49, 73
Loureiro, Cândida	73	Nielsen, Emma	58, 64
Lunn, Daniel	74	Nierenberg, Andrew	69
Lutz, Pierre-Eric	68	Nock, Matthew	9, 29, 61
Lytle, Megan	67	Nolte, Kurt	71
Maaranen, Richard	67	Nordentoft, Merete	9
Macias, Gloria	65	Norman, Ross	69
Macleod, John	67	O'Brien, Kimberly	42, 70, 74
Majumder, Pallab	70, 72	O'Connor, Rory	9, 29, 45, 60
Mallard, Travis	68	O'Connor, Stephen	69
Malone, Kevin	23	O'Donnell, Matt	69
Mann, J. John	63, 74	Olié, Emilie	32
Mann, John	9, 21, 30, 43, 60	Oquendo, Maria	9, 29, 31, 53, 63, 74
Mansfield, Julie	59	Ordway, Gregory	22
Maramaldi, Peter	64, 68	O'Rourke, Norm	69
Mars, Becky	62, 67	Ortiz, Hernan	9
Marshall, Doreen	38	Overholser, James	63
Martínez, Juan Carlos	9	Pacheco, Carla	73
Martin, Rachel	45	Pao, Maryland	61, 75
Maru, Mihoko	69	Parker, Alex	73

## AUTHOR INDEX

Pastinen, Tomi	68	Rojas, Sasha	64, 65, 70
Paul, Elise	65	Ross, Abigail	74
Pearson, Jane	32, 50, 58	Rudd, M. David	9, 47
Pease, Anna	66	Rujescu, Daniel	9, 30, 34
Pelayo-Terán, José M	65	Runeson, Bo	72
Peralta, Ana Ortin	33	Russon, Jody	72
Pérez-Dagdug, Ariadna	72	Saiz, Pilar	9, 30
Pérez-Iglesias, Rocío	65, 67	Salander-Renberg, Ellinor	64
Perez-Sola, Victor	71	Salcedo, Stephanie	69
Petersen, Julie	73	Santos, José	60, 68, 73
Phillips, Michael	9	Sarchiapone, Marco	9, 35
Pimentel, Richard	67	Sareen, Jitender	65, 71
Pinto, Joana	73	Sargent, Rob	67
Piper, Martyn	62	Sarma, Sisira	69
Pirkis, Jane	9, 23, 73	Sauer-Zavala, Shannon	62
Plener, Paul	71	Sawyer, Chelsea	70, 72
Podlogar, Matthew	74	Sayal, Kapil	64, 70, 72
Poitras, Beth	71	Schaffer, Ayal	62, 65, 67, 71
Polanco-Roman, Lillian	64	Schluter, Magdalen	71
Polunina, Anastasia	60	Schmidtke, Armin	9
Pool-Garcia, Sherezada	72	Schroeder, Bonnie	69
Posner, Kelly	54	Séguin, Monique	63
Postolache, Teodor	22, 62	Seo, Hye Jin	66
Potokar, John	62	Shaffer, David	9, 33
Poujol, Raphaël	68	Sharp, Carla	64, 70, 75
Powell, Daniel	61, 75	Shearer, Annie	68
Prinstein, Mitchell	44	Sheftall, Arielle	61
Pushpakumara, Janaka	60	Shelef, Leah	64
Putnam, Sandra	71	Sherrill, Joel	32
Puzia, Megan	73	Shiraga, Keisuke	73
Qin, Ping	9, 24, 35, 71	Shulman, Kenneth	71
Quinones, Victoria	65	Silenzio, Vincent	62, 67
Rabenstein, Stephanie	70	Silva, Caroline	74
Rajalin, Mia	64	Simões, Rosa	73
Rajamanickham, Venkatesh	67	Simon, Gregory	30
Raue, Patrick	49	Simpson, Alexander	62
Rebok, Federico	64, 70	Singh, Devita	70
Reis, Catherine	65	Singh, Tanya	63
Renaud, Johanne	66	Sinyor, Mark	62, 65, 67, 71
Renberg, Ellinor Salander	71, 75	Sirey, Jo Anne	49
Rennix, Christopher	61, 66, 71	Skinner, Kayla	65
Renshaw, Perry	67	Smith, Gordon	71
Reuter, Tyson	70	Smith, Ken	67
Reval, Karen	73	Smith, Noelle	24
Reynolds, Brady	61	Snyder, Deborah	61, 75
Rhimer, Zoltan	9	Spirito, Anthony	42
Ribeiro, Jessica	42	Spittal, Matt	73
Richard-Devantoy, Stéphane	6, 32, 46	Spiwak, Rae	71
Ridley, Josephine	63	Squitieri, Helen	68
Rihmer, Zoltán	62	Stanley, Barbara	9, 29, 36, 43, 61, 63, 69, 74
Riley, Colin	68		
Rivas, Juan	65	Stanley, Ian	68, 72, 74
Robert, Marie	63	Steinberg, Laurence	65
Robinson, Jo	69, 73	Stewart, Robert	62, 66
Robison, Brian	67	Stowe, Zachary	68
Rockett, Ian	71	Strömsten, Lotta	75
Rodante, Demián	64, 70	Sublette, M. Elizabeth	63
Rodrigues, María	69	Sun, Long	62

## AUTHOR INDEX

Susukida, Ryoko	70	Wasserman, Danuta	9, 30, 34
Suttle, Rosemarie	73	Wasserman, Victor	75
Sylvia, Louisa	69	Wei, Li	66
Syojima, Sachiko	73	Weinstein, Sally	6, 73
Szanto, Katalin	9, 34, 37	Weinstock, Lauren	65
Tagerman, Michelle	69	West, Amy	73
Tan, Lynnette Pei Lin	71	Westerlund, Hugo	71
Temple, Jeff	70	Wetherall, Karen	59
Teran, Jose Maria Pelayo	67	Wharff, Elizabeth	47, 64, 68, 74
Tetí, German	64, 70	Whiteside, Ursula	38
Thomas, Kristie	64, 68	Wiegand, Timothy	62
Thomas, Kyla	66	Wilcox, Holly	41, 49, 70
Thorell, Lars	22	Wilcox, Marsha	61
Till, Benedikt	73	William, Nancy	67
Tilling, Kate	67	Williams, Caitlin	68, 74
Timpano, Kiara	69	Williams, Mark	5, 25
Tingey, Lauren	68, 73	Williams, Megan	67
Tinghög, Petter	72	Williamson, David	68
Tiwari, Arun	68	Wilson, Kim	69
Tobon, Daniel	65	Wintersteen, Matthew	37
Tomczak, Philippa	65	Wittchen, Hans-Ulrich	72
Townsend, Ellen	64, 70, 72	Wittenberg, Gayle	61
Tran, Ulrich S.	73	Wolff, Jennifer	42
Tremblay, Richard	66	Woodward, Alan	73
Tsypes, Aliona	54, 64	Woolley, Mary	12, 25
Turecki, Gustavo	9, 22, 30, 43, 66, 68	Wortzel, Hal	69
Vaiva, Guillaume	9	Wu, Dan	71
Valderrama, Jorge	61	Wyllie, Clare	62
VanDerslice, Jim	67	Yang, Jennie	68
Veilleux, Jennifer	65	Yip, Paul	9, 61, 66
Vélez, Yovanska Duarté	42	Yurgelun-Todd, Deborah	66
Venta, Amanda	75	Yur'yev, Andriy	54
Vento, Stephanie	62	Zai, Clement	68
Victor, Sarah	71	Zalsman, Gil	9, 41, 59, 60
Vijayakumar, Lakshmi	9	Zapico-Merayo, Yolanda	65
Villate, Jennifer	31	Zárate, Carlos Alfonso Tovilla	56, 72
Vincent, John	68	Zhang, Jie	62
Voss, Catharina	72	Zhang, Ji-Yu	66
Vostanis, Panos	70, 72	Zhang, Wen-Chao	66
Wadman, Ruth	70, 72	Zhang, Yue	67
Walkup, John	21, 31	Zisook, Sid	58
Wang, Mo	72		