

44th ANNUAL RESEARCH CONFERENCE

***Advancing Nursing Research With
Diverse Populations***

April 1 – 4, 2020

VIRTUAL CONFERENCE



IOWA IS YOUR CAREER DESTINATION

Exceptional environment and strong interdisciplinary teams place the University of Iowa on the leading edge of nursing innovation.

AREAS OF EXCELLENCE

- Pain, Palliative Care and Symptom Science
- Gerontology and Community Engagement
- Chronic Illness Management
- Health Systems and Information Technology
- Informatics and Data Science

TOP-RANKED PROGRAMS

- World-renowned PhD program
- Cutting-edge DNP and CNL programs
- Innovative healthcare simulation experiences
- Post-graduate Dual-certification options

FACULTY OPPORTUNITIES

- Tenure and Clinical Track openings
- Sally Mathis Hartwig Professorship in Gerontological Nursing
- Rita and David Frantz Endowed Professorship in Nursing

OUTSTANDING RESOURCES

- NIH Clinical and Translational Science Award
- NINR P20 Exploratory Center for Advancing Multimorbidity Science
- NINR T32 in Pain and Associated Symptoms
- Csomay Center for Gerontological Excellence
- Center for Nursing Classification and Clinical Effectiveness

IOWA
NURSING

nursing.uiowa.edu
nursing-research@uiowa.edu



Dear Colleagues,

On behalf of the Midwest Nursing Research Society Board of Directors, I want to thank the 1,314 dedicated members for ensuring that MNRS continues to be the premiere regional nursing research society. Each year at the annual conference I am astounded by the research that our members are sharing. The nursing discipline has an exponential impact because of you and your scholarship.



As we carry this innovative trend into 2020, we cordially invite you to join MNRS in the first ever VIRTUAL conference. While the format will be different, the schedule will remain as planned on April 1 -4, 2020. Additionally, we would like to thank our host schools University of Illinois at Chicago, Loyola University Chicago, and Rush University. This conference would not have been possible without the generous support of these schools and all the organizations who participate as sponsors, advertisers, and exhibitors.

I would like to extend my appreciation to the Program Planning Committee (PPC) and volunteers who contributed countless hours to ensuring the success of the conference on this new virtual platform. Under the leadership of Dr. Susie Breitenstein, the PPC has organized a stimulating conference that will provide opportunities for attendees to hear about generation and application of cutting-edge research, engage in thoughtful discussions, network with fellow nursing scholars, and learn about emerging research methods and applications.

Highlights of the conference include paper presentations, poster discussions, and poster presentations that cover all nineteen (19) of the MNRS Research Interest Groups. Additionally, we have Dr. Shannon Zenk from the University of Illinois at Chicago, and Dr. Kathleen Delaney Simpson from Rush University providing the opening and closing keynote presentations focused on the 2020 Conference theme: *Advancing Nursing Research with Diverse Populations*. MNRS will continue to provide outstanding career development guidance and learning opportunities for nurse scientists and scholars at all levels – from students and junior investigators to mid-career and senior scientists.

How ironic that this global health pandemic is occurring in the World Health Organization's Year of the Nurse and Midwife. It is through the example of Florence Nightingale that nurses, nurse researchers, and nurse educators will rise to the challenge that has presented itself and will continue forward in the months ahead. Thank you for all you do and for being a part of the healthcare solution.

In the meantime, we encourage you to join us for the 2020 Annual Research Conference and take full advantage of opportunities to hear the latest in nursing research and network with old and new colleagues and friends.

Enjoy the conference and stay safe and healthy.



Cindy Anderson, PhD, RN, WHNP-BC, ANEF, FAHA, FNAP, FAAN
President, Midwest Nursing Research Society



OFFICE OF THE GOVERNOR

207 STATE HOUSE
SPRINGFIELD, ILLINOIS 62706JB PRITZKER
GOVERNOR

April 1-4, 2020

Greetings!

I am pleased to welcome everyone to the 44th Annual Midwest Nursing Research Society Conference.

Today's attendees play a large role in protecting the health of our nation's residents. Since its founding, the Midwest Nursing Research Society has provided a platform for members of the nursing profession to explore innovative solutions to the challenges facing our health care system. Health care is a human right, and like my administration, the Midwest Nursing Research Society is dedicated to ensuring that every resident of our country benefits from advances in medicine. This annual conference provides such an opportunity, with nearly 1,000 attendees from across the nation gathering to discuss, showcase, and learn from one another and leaders in the nursing community. It brings me pride to lead a state with professionals so dedicated to bettering the health of the communities they serve.

As you reflect on your achievements from this past year, I hope you all can make new connections and plan for a future that builds on your accomplishments. I am certain that this conference will go a long way towards ensuring Illinoisans remain healthy and able to thrive for years to come.

On behalf of the people of Illinois, I offer my best wishes for a memorable and productive conference.

Sincerely,

A handwritten signature in black ink, appearing to read "JB Pritzker".



VILLAGE OF SCHAUMBURG

MUNICIPAL CENTER / 101 SCHAUMBURG COURT / SCHAUMBURG, IL 60193-1899
847.895.4500 / TDD 847.923.4435 / FAX 847.895.7806 / WWW.CI.SCHAUMBURG.IL.US

PROCLAMATION

WHEREAS, nursing researchers and scientists work on every level from the cell, to the person, to the community and all the way through to health systems and policy; and

WHEREAS, the nurse's perspective on health and healthcare, from patients' personal health behaviors to societal and environmental influences on how people live, is unique among healthcare providers; and

WHEREAS, the best outcomes in healthcare are often realized through evidence-based practice, thus it makes sense that the best people to drive discoveries and produce evidence that is crucial to nursing practice are nurses themselves; and

WHEREAS, the theme for the Midwest Nursing Research Society's 44th annual conference April 1-4 at the Renaissance Schaumburg Convention Center is "Advancing Nursing Research with Diverse Populations"; and

WHEREAS, the goals of this conference are to exchange novel scientific ideas to support the generation of nursing research and implementation of evidence-based practice with diverse populations, describe how nursing research can influence the overall health of diverse populations and discuss innovative strategies for nursing research and evidence-based practice.

NOW, THEREFORE, BE IT RESOLVED, that I, Tom Dailly, Village President of the Village of Schaumburg, do hereby proclaim April 1, 2020, as:

Nursing Research Awareness Day in Schaumburg



IN WITNESS WHEREOF, I have hereunto set my hand and caused the Seal of the Village of Schaumburg to be affixed this 1st day of April 2020.

Tom Dailly

Tom Dailly
Village President

TABLE OF CONTENTS

President's Message.....	3
Illinois Gubernatorial Letter.....	4
Schaumburg President's Proclamation.....	5
MNRS Leadership.....	7
Program Planning Committee.....	8
General Information.....	10
MNRS Keynote Presentations.....	14
MNRS Presentations: Formats and Special Sessions.....	17
2020 Host and Co-Host Schools.....	23
Conference Sponsors.....	24
Virtual Exhibitor Information.....	26
Acknowledgements—Reviewers, Moderators & Volunteers.....	28
Schedule-at-a-Glance.....	29
MNRS Award and Grant Recipients.....	31
MNRS 2020 RIG Awards.....	37
Foundation Donors.....	41
Save the Date: 2021 Conference in Des Moines!	43



2019-2020 MNRS BOARD OF DIRECTORS

President

**Cindy Anderson, PhD, RN, WHNP-BC, ANEF,
FAHA, FNAP, FAAN**
The Ohio State University

Past President

Janean Holden, PhD, RN, FAAN
University of Michigan

Vice President

Jill Kilanowski, PhD, RN, APRN, CPNP, FAAN
Retired

Treasurer

Sharon Tucker, PhD, RN, PMHCNS-BS, FAAN
The Ohio State University

Secretary

Amy Jude Hoffman, PhD, RN, MSN
The University of Nebraska Medical Center

MNRS Foundation President

JoEllen Wilbur, PhD, RN, FAAN
Rush University

Board Director- at- Large

Kelly Wierenga, PhD, RN
Indiana University

Board Director- at- Large

Kamal Eldeirawi, PhD
University of Illinois at Chicago

Board Director- at- Large

Heather K. Hardin, PhD, RN
Case Western Reserve University

Student Representative

Sarah Oerther, MSN, MEd, BSN, RN
Saint Louis University

2019-2020 MNRS FOUNDATION BOARD OF TRUSTEES

MNRS Foundation President

JoEllen Wilbur, PhD, RN, FAAN
Rush University

Past President

Janet Larson, PhD, RN, FAAN
University of Michigan

Secretary

Robert Topp, PhD, RN
The University of Toledo, College of Nursing

Board Liaison

Sharon Tucker, PhD, RN, ARNP-CNS, FNAP, FAAN
The Ohio State University

Trustee

Ann Marie McCarthy, PhD, RN, FNASN, FAAN
University of Iowa

Trustee

Jean F. Wyman, PhD, CNP, RN, FAAN
University of Minnesota - School of Nursing

Trustee

**Cynthia Arslanian-Engoren, ACNS-BC, FAAN, FAHA,
PhD**
University of Michigan

Trustee

Christine Kovach, PhD, RN, FGSA, FAAN
Ovation Communities

Trustee

Grant Pignatiello, PhD, RN
Case Western Reserve University

2020 PROGRAM PLANNING COMMITTEE

PPC Chair

Susan Breitenstein, PhD, RN, FAAN
The Ohio State University

PPC Chair- Elect

Julie Anderson, CCRC, PhD, RN
Winona State University

PPC Immediate Past Chair

Marilyn Frenn, CNE ANEF, FTOS, PhD, RN, FAAN
Marquette University

PPC Board Liaison

Jill F. Kilanowski, PhD

PPC Members-at- Large

Nancy Albert, PhD, CCNS, NE-BC, CCRN, FAHA, FAAN
Cleveland Clinic Foundation

Meriam Caboral-Stevens, PhD, RN, NP-C
Eastern Michigan University

Kimberly Dillon-Bleich, PhD
Ursuline College

Christine Eisenhauer, PhD, CNE, ARNP-CNS
University of Nebraska Medical Center

Barbara Fowler, BSN, MSN, PHCNS-BC, PhD
Wright State University

Carol Geary, MBA, BSN, PhD
University of Nebraska Medical Center

Mikel Hand, EdD, RN, OCN, NE-BC, NEA-BC
University of Southern Indiana

Teresa S Johnson, PhD, RN
University of Wisconsin - Milwaukee

Jamie Leslie, PhD
University of Cincinnati

Cheng-Ching Liu, PhD
Michigan State University

Angela Opsahl, DNP, RN, CPHQ
Indiana University School of Nursing

Lorraine Robbins, PhD, RN, FNP-BC, FAAN
Michigan State University

Elizabeth Swanson, PhD, RN
University of Iowa

Tanya Trotter, APRN, CNS-BC
University of North Dakota

Roxanne Vandermause, PhD
University of Missouri - St. Louis

Joachim G Voss, ACRN, PhD, RN, RN
Case Western Reserve University

Eileen Collins, PhD, RN, ATSF, FAAN
University of Illinois at Chicago (2020 Host School)

Karen Saban, PhD, RN, APRN, CNRN, FAHA, FAAN
Loyola University Chicago (2020 Host School)

JoEllen Wilbur, PhD, APN, CNP, RN, FAAN
Rush University Medical Center (2020 Host School)

Linda Hand, PhD
University of Iowa (2021 Host School)

Barbara St. Marie, PhD, AGPCNP, FAANP
University of Iowa (2021 Host School)

RESEARCH GRANTS

With its continued mission of supporting the advancement of nursing research, the Sigma Foundation for Nursing is currently accepting applications for many collaborative research grants.

Grants are made possible through contributions to the Sigma Foundation for Nursing's research endowment.



1 APRIL

Association of Nurses in AIDS Care Grant
Hospice and Palliative Nurses Foundation
End-of-Life Nursing Care Research Grant

**Midwest Nursing Research Society
Research Grant**

National Association of Hispanic Nurses
Research Grant

Southern Nursing Research Society
Research Grant



1 MAY

Global Nursing Research Grant
American Nurses Foundation Grant

View more grant opportunities at www.SigmaNursing.org/Grants.

CLEVELAND STATE UNIVERSITY

APPLY NOW FOR OUR DOCTOR OF NURSING PRACTICE!

- Family Nurse Practitioner – post BSN
- Psychiatric/Mental Health Nurse Practitioner – post BSN
- Health Systems Leadership – post MSN

Accepting applications now for Fall 2020

CSU OFFERS A FULLY ONLINE MASTER OF SCIENCE IN NURSING DEGREE WITH FOUR TRACKS TO CHOOSE FROM:

- Education
- Clinical Nurse Leader
- Forensics
- Specialized Population

Accepting applications now for Fall 2020

LOOKING TO BRIDGE FROM YOUR ADN TO A BSN? CSU OFFERS A FULLY ONLINE RN TO BSN PROGRAM

Enrollment is year round

PRE-LICENSURE PROGRAMS TO EARN YOUR BSN

- 18 month Accelerated BSN
- Traditional Daytime BSN
- Evening/Weekend BSN



School
of Nursing

TO APPLY VISIT OUR WEBSITE: www.csuohio.edu/nursing

FOR MORE INFORMATION ON ANY OF OUR NURSING PROGRAMS EMAIL US AT: sonadvising@csuohio.edu

PRE-CONFERENCE WORKSHOPS



Three pre-conference workshop are offered on Wednesday, April 1, 2020. These pre-conference workshops are ticketed and there is an additional registration fee to attend. Pre-conference workshop information is available in the online agenda planner.



DOWNLOAD THE MNRS APP

The MNRS Mobile App is available in the [App Store](#) for iPhones and the [Google Play Store](#) for Androids. Search 'MNRS 2020' to download today and look for the MNRS logo. The app is free to download.

If you want to use the 'Create Your Schedule' functionality, you will have to do that while connected to internet. You will be able to view the conference schedule, assigned rooms, zoom links and times while disconnected. This is a great way to track which sessions you attended and reference while completing your evaluation!

The mobile app is a tool that will allow you to browse the Annual Conference schedule, read the Program Book, view abstracts, and plan your personalized agenda for the conference.



NEW MEMBERS/FIRST-TIME ATTENDEES

New members and first-time attendees are invited to an MNRS Orientation on Wednesday, April 1, 6:30-8:00 PM.



JOIN THE CONVERSATION

MNRS has gone social and we invite you to join the online conversation. Please be sure to follow/like the following MNRS social media accounts: **@MidwestNursing @MidwestNursingResearchSociety @TheMNRS**



And do not forget to use the hashtag **#MNRS2020** if you post pictures or comments about the 2020 Annual Research Conference.



MNRS NETWORKING LOUNGE

MNRS is a great place to network and collaborate with your fellow nurse researchers and clinicians. Please be sure to create a personal Zoom meeting and share your meeting room ID to create a virtual Networking Lounge to enable conversation, consultation, and potential collaboration among members with highly similar research interests. You can gather informally or formally to converse about research projects and ideas, obtain consultation from one another, and explore potential collaboration.

Consider using a personal Zoom meeting room to:

- Gather to discuss collaborating on a study or writing a grant application.
- Gather to begin planning a pre- conference workshop or a symposium.
- Provide information sessions about training opportunities.
- Meet with a MNRS senior scientist or mentor



CREATING AND USING ZOOM MEETING ROOMS

Creating a Zoom Personal Meeting Room Instructions:

- ❖ Go to www.zoom.us
- ❖ Click on the blue box in the top right side of the screen “**Sign-Up. It’s Free**”
- ❖ Enter your email address
- ❖ Wait for the confirmation email and activate your account
- ❖ Login and view your profile to see your personal meeting room link.

Accessing a Zoom Personal Meeting Room Instructions:

- ❖ Go to www.zoom.us
- ❖ Click “**Join a Room**”
- ❖ Enter the meeting ID or personal room name provided



QUESTIONS

If you have questions before or during the conference, we encourage you to:

- 1) Use the chat feature within the session to contact AV support staff
- 2) Use the Q&A feature to ask a question of the presenter
- 3) Email info@mnrs.org with additional questions or concerns. Calling the MNRS Executive Office is not advised as the response time may be delayed during the conference.



Ways to Support the Foundation

Virtual Raffle



CLICK HERE
to purchase Raffleless Raffle Tickets.

Gemstone Society



CLICK HERE to make a monthly or one-
time donation.

All gifts to the Foundation support nursing research, grant recipients, and MNRS.



GLADLY WE

Teach & Research

Illinois State University's Mennonite College of Nursing celebrates more than 100 years of history in nursing education—and we're aiming higher.

A RESEARCH INSTITUTION ON THE RISE

NEW Office for Research,
Scholarship & Innovation

Research start-up
packages available

Top 50 college town with
an easy drive to Chicago

First-choice institution with
high-achieving students

JOIN US

Learn more about our research and programs at:

Nursing.IllinoisState.edu



**Virtual
Tour**

Scan below or visit:
IllinoisState.edu/Visit



**ILLINOIS STATE
UNIVERSITY**
Mennonite College of Nursing

CONFERENCE THEME & OBJECTIVES

The theme for the 2020 conference is “*Advancing Nursing Research with Diverse Populations*”. The learner outcomes for the conference are:

- Exchange novel scientific ideas to support the generation of nursing research and implementation of evidence-based practice with diverse populations
- Describe how nursing research can influence the overall health of diverse populations
- Discuss innovative strategies for nursing research and evidence-based practice regarding global issues, immigration, intersections of care, disparity of care, equity and inclusion for care and research, and diverse and vulnerable populations.

KEYNOTE SPEAKERS



Shannon N. Zenk, PhD, MPH, FAAN

*Neighborhood Research to Advance Health Equity:
Up, Out, and Onward*

Thursday, April 2, 8:45 – 9:45 AM

Shannon N. Zenk, PhD, MPH, RN, FAAN is Nursing Collegiate Professor in the University of Illinois at Chicago College of Nursing. Dr. Zenk’s research focuses on understanding and addressing socio-environmental determinants of health to improve population health and eliminate inequities. Through pioneering research on food deserts, Dr. Zenk helped bring national attention to the problem of inadequate access to healthful foods in low-income and segregated neighborhoods. Dr. Zenk has since produced crucial evidence on the health implications of these neighborhood disparities, including by leveraging electronic health record data in longitudinal studies of millions of Americans. Using quasi-experimental study designs, she studies how intervention effectiveness depends on environmental context and evaluates policy impacts on health. Recognizing that a sole focus on residential environments may mischaracterize environmental exposures and lead to misdirected or bypassed interventions, her other research expands environmental measurement to include “activity spaces”. Dr. Zenk is currently combining real-time data collection approaches (e.g., GPS tracking, smartphone surveys, food images, accelerometry) to understand how activity-space environmental exposures and personal trait and state factors (e.g., executive functioning, stress) interact to influence health behaviors in a multiethnic sample of 500 midlife adults. As a proponent of team science, she collaboratively conducts all this research as part of multidisciplinary teams.

The research of Dr. Zenk and her teams is widely recognized with broad impact. She and her colleagues have published some 110 journal articles and book chapters with more than 5500 citations and have received \$50 million in extramural funding. Their research has informed eminent scientific reports and statements and advocacy efforts, and ultimately has helped spark policy changes to improve access to healthy food. Dr. Zenk chairs the NIH Community Influences on Health Behavior study section and is Associate Editor for *Health & Place* and *Health Education & Behavior*. Her recent honors include the International Nurse Researcher Hall of Fame, Sigma Theta Tau and the President’s Award, Friends of the National Institute of Nursing Research. Dr. Zenk earned a BSN from Illinois Wesleyan University, joint MS-MPH from the University of Illinois at Chicago, and PhD from the University of Michigan School of Public Health.

KEYNOTE SPEAKERS



Kathleen R. Delaney, PhD, PMH-NP, FAAN

*Science as a Foundational Driver of Population Health:
Get Noticed, Disrupt, and Stay Connected*

Saturday, April 4: 10:30 – 11:45 AM

As a teacher/practitioner at Rush College of Nursing (CON), Dr Delaney has blended her academic, clinical & research roles. Her research has focused on creating safe and healing psychiatric environments for individuals with serious emotional disorders (SED) and on increasing access to child mental health services.

Dr. Delaney recently designed and tested a measure of the degree a treatment environment is patient-centered/recovery oriented. Dr Delaney has authored policy statements focused on reducing stigma, prevention & bringing mental health services to the community settings where individuals live and work. She is currently a professor at the CON, director of the HRSA funded, Psychiatric Mental Health Nurse Residency program & a member of state and national committees studying workforce & quality of mental health care.





202



*Year of the Nurse
& Midwife*

**An inspiration to nurse
researchers for 200 years...**

**Who
INSPIRED
you?**

[Click here](#) to make a gift to the
MNRS Foundation and Honor
a Researcher.

#MNRS2020

#YearOfTheNurse



VIRTUAL CONFERENCE

The 44th Annual Research Conference has transitioned to a VIRTUAL experience. All the science sessions will be hosted on a Zoom platform and will run April 1-4, 2020, as originally scheduled. All session links will be shared with presenters and attendees before the conference launches. Please note that sessions will be recorded and remain live in a conference library for **30 days** in case you are not able to attend the conference on the dates scheduled.

If you have questions before or during the conference, we encourage you to:

- 1) Use the chat feature within the session to contact AV support staff
- 2) Use the Q&A feature to ask a question of the presenter
- 3) Email info@mnrs.org with additional questions or concerns. Calling the MNRS Executive Office is not advised as the response time may be delayed during the conference.

POSTER PRESENTATIONS

All poster presentations will be available in the e-poster gallery for conference attendees to view at their convenience. [Click here to access the gallery](#). Poster presenters can be contacted during their assigned session using the “**Join Online Meeting**” link. This link will bring you to the presenter’s personal Zoom meeting room or email address depending on which they selected as their preferred communication method. Authors are asked to be in attendance during the poster session to answer questions about your poster.

POSTER SESSION HOURS

Thursday, April 2, 2020: 3:15 PM – 4:45 PM CDT

Friday, April 3, 2020: 1:15 PM – 2:45 PM CDT

STUDENT POSTER COMPETITION

The Student Poster Competition will transition to the virtual format. Student work will be judged online using the e-poster gallery and winners will be announced via a conference wide email during the schedule session times, as well as, during the Business Meeting and Awards Ceremony.

To foster discussion and feedback regarding posters, students are asked to be in attendance to their personal Zoom room during the assigned poster session to answer questions about their science.

BSN & MN/MSN: Thursday, April 2, 2020: 3:15 PM – 4:45 PM CDT

PhD & DNP: Friday, April 3, 2020: 1:15 PM – 2:45 PM CDT

NEW PRESENTATION FORMATS

The Postcard Presentation is a new format for the 2020 Annual Research Conference and provide opportunities for the author to provide one electronic slide and a 5-minute summary highlighting the key points of the work.

20x20 Presentations are also new and are opportunities for the author to give an oral presentation using 20 slides that automatically advance every 20 seconds. The session will include 6 presentations and will conclude with up to 15 minutes of group discussion.

POSTER DISCUSSION

Since we do not have the opportunity to showcase physical posters within poster discussion presentations, all poster discussion presentations have been modified for the 2020 Annual Research Conference. Each poster discussion presentation will include digital posters. Poster Discussion presentations will begin with introductions for the first 30 minutes and the remaining 60 minutes will include a moderated thematic discussion of the science.

NETWORKING

Networking is an essential part of the MNRS Annual Research Conference. Please be sure to schedule collaborative meetings and discussions throughout the conference by inviting attendees to join you in a personal Zoom meeting room.

Zoom Personal Meeting Room:

- ❖ Go to www.zoom.us
- ❖ Click on the blue box in the top right side of the screen “Sign-Up. It’s Free”
- ❖ Enter your email address
- ❖ Wait for the confirmation email and activate your account
- ❖ Login and view your profile to see your personal meeting room link.

CONTINUING EDUCATION

MNRS will offer continuing education credits to all conference attendees who purchased the option during registration. If you did not purchase during registration, you will be given the option during the meeting evaluation. After the conference, all attendees will be asked to evaluate the conference and attest to the sessions they attended.

RIG MEETINGS

MNRS values the Research Interest Groups (RIG) and the RIG Meetings at the Annual Research Conference. Please be sure to watch for more information from your RIG Chair regarding the date and time for your 2020 RIG meeting.

FOUNDATION FUNDRAISING

Unfortunately, the MNRS Foundation raffle and reception were not transferable to the virtual conference experience. The MNRS Foundation Board of Trustees and Fundraising Committee invites you to purchase virtual raffle tickets during the conference in lieu of raffle tickets. The MNRS Foundation needs your partnership to ensure budding nursing researchers have the funding to launch their science.



CLICK HERE
to purchase Raffleless Raffle Tickets.



CLICK HERE to make a monthly or one-time donation.

MNRS Career Center



Matching fantastic
job opportunities
with amazing
talent!



Please visit website: <https://mnrs-jobs.careerwebsite.com/>



CONFERENCE

Check your daily emails or the itinerary planner for the conference zoom links.

Midcareer Nurse Scholars Keeping the Momentum: Challenges, Opportunities, and Lessons Learned

Thursday, April 2, 2020: 10:00 AM – 11:30 AM

This session will comprise two parts. In the first part, two prominent nurse scientists will present about their career trajectory and share lessons-learned about their journey as research scientists. In the second interactive part, participants will have the opportunity to ask questions, receive feedback, and share experiences related to their careers. The session will shed light on challenges facing midcareer nurse scientists and opportunities/resources they could utilize to advance their research careers.

Speakers: Kamal Eldeirawi and Patricia Hershberger

Advancing the Science and Shaping Practice: Using Design Thinking to Address Opportunities and Challenges for Doctoral Education

Thursday, April 2, 2020: 1:30 PM – 3:00 PM

In this discussion, we discuss the differences between the PhD and the DNP and how those differences create teams to advance science and shape practice. We will emphasize successful partnerships between PhD and DNP-prepared nurses and other members of the healthcare team. This session will use design thinking to propose future strategies for optimizing PhD and DNP preparation to improve health and health care.

Speakers: Randolph Rasch, Connie Delaney, Bernadette Melnyk, Linda Scott, Katherine Bravo, Julie Zerwic, Juliann Sebastian

Editors' Special Session: True Tales from Publishing Research

Thursday, April 2, 2020: 5:00 PM – 6:30 PM

This session focuses on difficulties authors experience in publishing research. Successful researchers will recount their best and worst publication experiences. Stories will include author and journal generated problems. Authors will describe affective coping strategies for managing publication problems. Nurse editors will identify themes across the author stories. The themes will address author and journal actions that facilitate or hinder publication.

Speakers:

Vicki Conn, Rita Pickler, Christine Kovach, Elaine Miller, Shirley Moore, Janet Larson, Ann Marie McCarthy, Robert Topp, Susan Breitenstein, April Vallerand, and Ann Berger

Ph.D. in Three: The Lived Experience

Friday, April 3, 2020: 8:30 AM – 10:00 AM

While the number of nurses with a practice doctorate has skyrocketed in recent years, the number of nurses with a research doctorate remains stagnant and enrollments are falling. In total, less than 1% of nurses have a Ph.D. to develop nurse scientists and address the critical shortage of nursing faculty, in 2013 the Robert Wood Johnson Foundation (RWJF) launched the Future of Nursing Scholars (FNS) Program, focused on a three-year Ph.D. progression.

Speakers:

Jamie Rausch, Kara Koschmann, Kim Hartley, Elizabeth Umberfield, Stephanie Bennett, Meghan Hultman, Amanda Missel, and Katherine Breen



Sinclair School of Nursing

University of Missouri



JOIN OUR legacy of excellence

Award-Winning Research and Faculty

**teaching & research
faculty positions
NOW OPEN**

Tenure-track and teaching-track positions available:

- Family Nurse Practitioner
- Psychiatric Mental Health Nurse Practitioner
- Tenure-track/Tenured Faculty Research Positions
- Mental Health Nursing
- Medical-Surgical Nursing

nursing.missouri.edu/employment

5 NEW MASTERS options **earn your MS on the way to DNP!**

Family Nurse Practitioner (FNP) • Pediatric Nurse Practitioner (PNP) • Pediatric Clinical Nurse Specialist (PCNS) • Adult-Gerontology Clinical Nurse Specialist (AGCNS) • Psychiatric and Mental Health Nurse Practitioner (PMHNP) • Nurse Educator (EDU)

nursing.missouri.edu/academic-programs/msn

For tenure-track faculty inquiries:

Bonnie Wakefield, PhD, RN, FAAN
Associate Professor
(573) 882-5689
wakefieldb@missouri.edu

For teaching-track and adjunct inquiries:

Tina Otterness
MU Sinclair School of Nursing
(573) 882-0237
klof4q@missouri.edu

Follow Us!

  **MizzouNursing**

National Institute of Nursing Research Special Session

Friday, April 3, 2020: 8:30 AM – 10:00 AM

The session lead off speaker is Dr. Tara Schwetz, Acting Director, National Institute of Nursing Research, will provide an update on NINR and share recent initiatives taking place at NINR and NIH. Program Directors Dr. Lynn Adams, Dr. Kris Bough and Dr. Martha Matocha will follow with descriptions of activities within the NINR Division of Extramural Science Programs and provide information about applying for NIH funding. There will be an opportunity for questions and answers.

Speakers: Tara Schwetz, Dr. Lynn Adams, Dr. Kris Bough and Dr. Martha Matocha

Being Successful in the Current Funding Climate

Friday, April 3, 2020: 5:30 PM – 7:00 PM

This session is designed specifically for junior faculty and doctoral students who may find the information useful as they transition from degree seeking researchers/educators to faculty positions where writing research grant proposal in the current funding climate is vital. Mid- and senior-career faculty/scientists may use the session information to mentor junior faculty to go through successful strategies of the research proposal writing and application process.

Speakers:

Yvonne Lu, Gordon Gillespie, Jodi Ford, AkkeNeel Talsma, and Joan Haase

Innovative Strategies to Promote and Sustain Interest in PhD in Nursing

Saturday, April 4, 2020: 8:45 AM – 10:15 AM

One of the goals of the IOM recommendations is to double the number of nurses with terminal degrees by 2020. Although the number of nurses with DNPs has dramatically increased, as of now, nurses with a Ph.D. still comprise less than 1% of the nursing workforce. This session will present strategies that had been effective in promoting and sustaining interest in Ph.D. in Nursing among baccalaureate nursing students as well as the outcomes of intentional exposure to evidence-based practice and real-life research opportunities on graduate school decision.

Speakers:

Adejoke Ayoola, Kendra Kamp, Yenupini Adams, Josephine Granner, and Haeun Lee

Many thanks to the
44th Annual Research Conference
Host and Co-Host Schools:

**THE
UNIVERSITY OF
ILLINOIS
AT
CHICAGO
NURSING**



MARCELLA
NIEHOFF
SCHOOL of NURSING



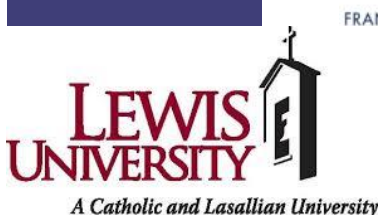
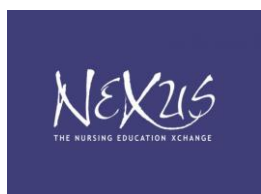
RUSH UNIVERSITY

COLLEGE OF NURSING

MANY THANKS TO OUR SPONSORS:



MANY THANKS TO OUR ADVERTISERS:



MANY THANKS TO OUR EXHIBITORS:



The Exhibit Zoom Sessions will be located in each of the exhibitor's private zoom rooms or can be contacted by e-mail. Please visit the exhibits during the following exhibit hours:

Thursday, April 2

Exhibit Hall Open 11:45AM – 1:15PM CDT

Friday, April 3

Exhibit Hall Open 11:45AM – 3:00PM CDT

VIRTUAL EXHIBITORS

Institution/Company	Contact Name	Contact E-mail Address	Zoom Meeting Room Link
DePaul University	Joseph Tariman	jtarian@depaul.edu	April 2 https://depaul.zoom.us/j/227837207
			April 3 https://depaul.zoom.us/j/465602678
Goldfarb School of Nursing at Barnes-Jewish College	Rebecca Boettcher	rebecca.boettcher@barnesjewishcollege.edu	https://zoom.us/j/2365132123
Illinois State University Mennonite College of Nursing	Emily McMahon	eemcma1@ilstu.edu	https://illinoisstate.zoom.us/j/623566501
Loyola University Chicago	Glenda Runnels	grunnels@luc.edu	https://luc.zoom.us/j/3527235493
Mayo Clinic	Jennifer Schilbe	schilbe.jennifer@mayo.edu	https://zoom.us/j/5546187336
Rush University	Jennifer Thorndyke	Jennifer_Thorndyke@rush.edu	https://Rush.zoom.us/j/5316826462
Saint Louis University, Trudy Busch Valentine School of Nursing	Helen Lach	helen.lach@slu.edu	
The Ohio State University College of Nursing	RJ Byrnes	nursing@osu.edu	https://osu.zoom.us/j/126976747
University of Illinois at Chicago - College of Nursing	Kimberly White	kimwhite@uic.edu	https://zoom.us/j/9885429588
University of Iowa College of Nursing	Linda Liu Hand	linda-hand@uiowa.edu	https://uiowa.zoom.us/j/6054304302
University of Missouri St. Louis - Graduate Programs	Stacy Pearson	pearsonsr@umsl.edu	https://umsl.zoom.us/j/2636825570

VIRTUAL EXHIBITORS

University of Nebraska Medical Center	Lisa Muschall	lmuschal@unmc.edu	April 2 https://unmc.zoom.us/j/251506075 April 3 https://unmc.zoom.us/j/471837269
University of Southern Indiana College of Nursing and Health Professions	Mikel W Hand	mwhand@usi.edu	https://usi.zoom.us/j/8124927807
University of Wisconsin- Madison School of Nursing	Kate Beggs	admissions@nursing.wisc.edu	https://zoom.us/j/9563733438

Institution/Company	Website
Chamberlain University	https://www.chamberlain.edu/
Council for the Advancement of Nursing Science	https://www.nursingscience.org/
Eastern Michigan University	https://www.emich.edu/chhs/nursing/index.php
Epigenomics	https://www.epigenomics.com/products/
Grand Valley State University	https://www.gvsu.edu/kcon/
Lewis University	https://www.lewisu.edu/academics/nursing/index.htm
University of Kansas	http://nursing.kumc.edu/
University of Wisconsin – Milwaukee	https://uwm.edu/nursing/



College of Nursing

*Transform lives and discover
exciting possibilities!*



JOIN a dynamic team of faculty

Current openings:

- » Assistant Dean – Omaha Campus
- » Associate Dean for Research
- » Nurse Practitioner Faculty (PhD or DNP)
- » Research Scientists

unmc.peopleadmin.com

EXPLORE graduate student opportunities

[unmc.edu/nursing/educational-programs/
graduate](http://unmc.edu/nursing/educational-programs/graduate)

ADVANCE DISCOVERIES

unmc.edu/nursing/research/niedfelt-center

Immerse yourself in the science of chronic illness self-management and interdisciplinary team science with a postdoctoral fellowship in the Center for Patient, Family, and Community Engagement in Chronic Care Management (CENTRIC) through discovery, dissemination, and diffusion.

unmc.edu/centric

MAKE A DIFFERENCE through faculty practice

[unmc.edu/nursing/partnerships/
morehead-center](http://unmc.edu/nursing/partnerships/morehead-center)



Learn more at unmc.edu/nursing

 facebook.com/UNMCCON

 twitter.com/UNMCCON



ABSTRACT REVIEWERS

Alham Abuatiq
 Said Abusalem
 Windy Alonso
 Angela Andrews
 Mary Anthony
 Kathy Auberry
 Wendy Bauer
 Rozina Bhimani
 Lisa Blair
 Marge Bott
 Melvina Brandau
 Susan Breitenstein
 Lisa Brodersen
 Gloria Brummer
 Susan Buchholz
 Sherleena Buchman
 Lisa Burkhart
 Wilma Calvert
 Barbara Carlson
 Pei-Shiun Chang
 Jo-Ana Chase
 Seung Hee Choi
 Becky Christian
 Rebecca Davis
 Kimberly Dillon-Bleich
 Jennifer Doering
 Anne Ersig
 Kathleen Fitzgerald
 Kay Foland
 Diane Forsyth
 Christine Fortney
 Mary Franklin
 Amy Garcia
 Phyllis Gaspar
 Timothy Gaspar
 Kimberlee Gretebeck
 Thao Griffith
 Lynne Hall
 Kawther Hamash
 Mikel Hand
 Linda Liu Hand
 Mary Beth Happ
 Ellen Harper
 Candace Harrington
 Mary Heitschmidt

Kayla Herbell
 Linda Herrick
 Barbara Holtzclaw
 Christine Horvat Davey
 Luz Huntington Moskos
 Deborah Jezuit
 Yun Jiang
 Teresa Johnson
 Sharon Jones
 Zorica Kauric-Klein
 Colleen Klein
 Kevin Kupzyk
 Kari Lane
 Sohye Lee
 Yi-Hui Lee
 Stacey Lerret
 Jamie Leslie
 Jiying Ling
 Keisha Lovence
 Susan Mazanec
 Barbara McMorris
 Scott Moore
 Darcy Nelson
 Geri Neuberger
 Sarah Newton
 Jennifer ORourke
 Julie Otte
 Rhoda Owens
 Julia Paul
 Kristen Pecanac
 Jill Peltzer
 Amy Petriner
 Celeste Phillips
 Linda Piacentine
 Ronald Piscotty
 Kathleen Poindexter
 Barbara Polivka
 Jaquetta Reeves
 Lorraine Robbins
 Sheria Robinson-Lane
 Marie-Anne Rosemberg
 Sheri Rowland
 Karen Saban
 Ali Salman
 Joanne Schneider
 Debra Schutte
 Patricia Sharpnack

Qiuhua Shen
 LeeAnne Sherwin
 Sandra Siedlecki
 Stephen Stapleton
 Thomas Stenvig
 Aluem Tark
 Marivic Torregosa
 Tanya Trotter
 Roxanne Vandermause
 Joachim Voss
 Ya-Fen Wang
 Andrea Warner Stidham
 Mary Whipple
 Deidre Wipke-Tevis
 Teresa Wood
 David Woodruff
 Dongjuan (Donna) Xu
 Yingzi Zhang

Olimpia Paun
 Patricia Sharpnack
 Tamra Shea
 Sandra Siedlecki
 Laureen Smith
 Traci Snedden
 Rika Tanda
 Jane von Gaudecker
 Celia Wills
 David Woodruff

MODERATORS

Susie Breitenstein
 Susan Buchholz
 Lisa Burkhart
 Eileen Collins
 Jorgia Connor
 Regina Conway-Phillips
 Ardith Doorenbos
 Susan Dunn
 Marilyn Frenn
 Carol Geary
 Shannon Halloway
 Mikel Hand
 Mary Heitschmidt
 Teresa Johnson
 Mary Kapella
 Jill Kilanowski
 Olimpia Paun
 Karyn Roberts
 Karen Saban
 Annie Thomas
 Joachim Voss
 JoEllen Wilbur

GRANT REVIEWERS

Debbie Bomgaars
 Margaret Campbell
 Jessica Castner
 Esther Chipps
 Beverly Dabney
 Christine Eisenhauer
 Kamal Eldeirawi
 Amany Farag
 Christine Fortney
 Mary Franklin
 Lindsey Garfield
 Barbara Giambra
 Carmen Giurgescu
 Karen Gorton
 Jill Guttormson
 Shannon Halloway
 Denise Hershey
 Cheryl Lefaiver
 Jiying Ling
 Wendy Looman
 Masako Mayahara
 Lynn Mohr
 Karen Monsen

BECOME A LOYOLA NURSE SCIENTIST OR PRACTICE SCHOLAR

BECOME A LOYOLA NURSE

CAPABILITIES

In our state-of-the-art research facilities, nursing faculty and students collaborate in a supportive environment to explore:

- Social context, stress, and epigenetic determinants of health
- Health disparities and vulnerable populations
- Prevention and self-management of chronic disease
- Optimizing outcomes in education and practice

DEGREE PROGRAMS

PhD in Nursing Science

- Improve human health through the development and expansion of nursing knowledge through our innovative PhD weekend program.

BSN to DNP and Post-Master's DNP tracks:

- Family Nurse Practitioner with Emergency Care specialization
- Psychiatric Mental Health Nurse Practitioner with Addictions and Substance Use specialization
- Adult-Gerontology Primary Care Nurse Practitioner Program with Oncology specialization
- Adult-Gerontology Clinical Nurse Specialist with Oncology specialization
- Post-Master's DNP focused on Systems and Leadership

VISIT • [LUC.edu/nursing](https://luc.edu/nursing)



**M A R C E L L A
NIEHOFF**
SCHOOL of NURSING

SCHEDULE AT A GLANCE

WEDNESDAY, APRIL 1, 2020

- 8:30 AM - 12 PM** **Morning Workshop:** *Advancing and Sustaining EBP and Clinician Well-being in Healthcare Systems to Achieve Healthcare's Quadruple Aim*
- 8:30 AM - 4:30 PM** **Full Day Workshop:** *Clinical Data Science for Beginners*
- 1 PM - 4:30 PM** **Afternoon Workshop:** *Patient and Community Engagement Efforts to Support an Equitable Precision Health Future*
- 5 PM - 6 PM** [RIG Chairs Meeting](#)
- 6:30 PM - 8 PM** [New Member Orientation](#)

- 10 AM - 11:30 AM** **Special Session:** [Midcareer Nurse Scholars Keeping the Momentum: Challenges, Opportunities, and Lessons Learned](#)
- 11:45 AM - 1:15 PM** **ESN Panel Presentation:** [Global Opportunities for Nursing Research & Evidence-Based Practice](#)
- 11:45 AM - 1:15 PM** **Exhibit Hours**
- 1:30 PM - 3 PM** **Concurrent Scientific Sessions**
PD B: [Gerontological Nursing Science, Health of Diverse Populations, Symptom Science, Research Through Academic-Clinical Partnerships](#)
20x20 B: [Adolescent Health, Women's Health & Childbearing, & Health of Diverse Populations](#)
PS B: [Women's Health & Childbearing, Family Health, & Pediatric](#)
SY 3: [Self-Care Research With Diverse Populations](#)
SY 4: [Health Technology to Support Care of Older Adults](#)

THURSDAY, APRIL 2, 2020

- 7:15 AM - 8:15 AM** [ESN Executive Committee](#)
- 7:15 AM - 8:15 AM** **RIG Meetings**
[Decision Making](#)
[Acute & Critical -Care Across the Lifespan](#)
[Self-Care](#)
[Gerontological Nursing Science](#)
[Adolescent Health](#)
[Research thru Academic-Clinical Partnerships](#)
[ESN Executive Committee](#)
- 8:30 AM - 9:45 AM** **Welcome & Opening Keynote**
[Neighborhood Research to Advance Health Equity: Up, Out, and Onward by Shannon Zenk, PhD](#)
- 10 AM - 11:30 AM** **Concurrent Scientific Sessions**
PD A: [Health System Policy & Informatics, Nursing Education, and Palliative & End-of-Life Care](#)
20x20 A: [Translational Science, Health of Diverse Populations, Health Promoting Behaviors Across the Lifespan](#)
PS A: [Symptom Science](#)
SY 1: [Clinical Research in Acute and Critical Care: Strategies for Success](#)

- 1:30 PM - 3 PM** **Special Session:** [Advancing the Science and Shaping Practice: Using Design Thinking to Address Opportunities and Challenges for Doctoral Education](#)
- 3:15 PM - 4:45 PM** **Poster Session 1 & Student Competition Featuring BSN & MN/MSN**
- 5 PM - 6:30 PM** **Concurrent Scientific Sessions**
PD C: [Population Health, Self-Care, Symptom Science](#)
PS D: [Acute & Critical Care, Health System Policy & Informatics, Palliative & End-of-Life Care](#)
PS C: [Gerontological Nursing Science](#)
SY 5: [Patient Reported Outcomes Among Diverse Populations](#)
SY 6: [Building the Science of Nursing Education](#)
- 5:00 PM - 6:30 PM** **Editors' Special Session:** [True Tales From Publishing Research](#)

SCHEDULE AT A GLANCE

FRIDAY, APRIL 3, 2020

7:15 AM - 8:15 AM

RIG Meetings

[Health of Diverse Population](#)
[Qualitative Methods](#)
[Population Health](#)
[Health Systems, Policy & Informatics](#)
[Nursing Education](#)
[Family Health](#)
[Physiology, Behavior, Genomics & Society](#)

8:30 AM - 10 AM

Concurrent Scientific Sessions

PD D: [Adolescent Health, Health Promoting Behaviors Across the Lifespan, Pediatric, Population Health, Qualitative Methods, Women's Health & Childbearing*](#)

PS E: [Diverse Populations, Family Health, Health Promoting Behaviors Across the Lifespan, Symptom Science](#)
SY 7: [Complementary/Integrative Modalities and Strategies for Palliative and End-of-Life Care for Patients and Families*](#)

SY 8: [Caregiving: There is Nothing Informal about Family Caregiving](#)

8:30 AM – 10 AM

Special Session: [Ph.D. in Three: The Lived Experience](#)

10:15 AM - 11:45 AM

PD E: [Gerontological Nursing, Palliative & End-of-Life, Health Promoting Behaviors Across the Lifespan, Acute & Critical Care](#)

20x20 C: [Population Health, Palliative & End-of-Life, Acute & Critical Care, Symptom Science](#)

PS F: [Nursing Education, Research Through Academic-Clinical Partnerships](#)

SY 9: [The Future of Women's Health and Childbearing Research: Challenges and Opportunities](#)

SY 10: [An Informatics Update for Nursing Researchers](#)

10:15 AM - 11:45 AM

Special Session: [NINR - Dr. Tara Schwetz, Acting Director, National Institute of Nursing Research](#)

11:45 AM - 3:00 PM

Exhibit Hours

12:00 PM - 1:00 PM

[ESN Liaison Meeting](#)

12 PM - 2 PM

Foundation Board Meeting (Invitation Only)

1:15 PM - 2:45 PM

Poster Session 2 & Student Competition Featuring PhD & DNP

3:15 PM - 3:35 PM

Distinguished Contribution Presentation: [Gwen Wyatt, PhD, RN, FAAN](#)

3:40 PM - 5:20 PM

[MNRS Annual Business Meeting & Awards Ceremony](#)

5:30 PM - 7:00 PM

Concurrent Scientific Sessions
20x20 D: [Gerontological Nursing Science, Health Promoting Behaviors Across the Lifespan, Palliative & End-of-Life Care](#)
PS G: [Health of Diverse Populations*](#)
SY 11: [Innovative Methodologies in Symptom Science](#)
SY 12: [Reaching Vulnerable Populations: Innovations in Adolescent/Emerging Young Adults Research](#)

5:30 PM - 7:00 PM

Special Session: [Being Successful in the Current Funding Climate](#)

SATURDAY, APRIL 4, 2020

7:15 AM - 8:15 AM

RIG Meetings

[Symptom Science](#)
[Palliative & End-of-Life Care](#)
[Health Promoting Behaviors Across the Lifespan](#)
[Women's Health and Childbearing](#)
[Pediatric](#)

SCHEDULE AT A GLANCE

SATURDAY, APRIL 4, 2020 (Cont.)

8:30 AM - 10:00 AM

Concurrent Scientific Sessions

20x20 E: [Populations Health, Health System Policy & Informatics, Nursing Education](#)

PS I: [Health System Policy & Informatics, Qualitative Methods, Physiology Behavior Genomics & Society](#)

PS H: [Adolescent Health, Family Health, Health of Diverse Populations*](#)

SY 13: [Use of Technology to Deliver Health Promotion Interventions to Diverse Populations](#)

SY 14: [Aging Well in the Community: Resources, Recommendations, and Readiness for Older Adults](#)

8:45 AM - 10:15 AM

Special Session: [Innovative Strategies to Promote and Sustain Interest in PhD in Nursing](#)

10:30 AM - 11:45 AM

Closing Keynote Presentation
[Nursing Science as a Foundational Driver of Population Health: Get Noticed, Disrupt, and Stay Connected by Kathleen Delaney, PhD, PMHNP](#)

11:45 AM - 12:00 PM

[Adjournment](#)

**CLICK HERE TO VIEW
THE FULL
CONFERENCE
SCHEDULE,
SESSIONS &
ABSTRACTS**

KEY

20x20 = 20x20 Presentation
PD = Poster Discussion
PS = Paper Session
SY = Symposium
*** = Eligible for Nurse
Pharmacotherapeutic
Credit Hours**

**CLICK HERE TO VIEW
THE FULL POSTER
INDEX**



Learn. Discover. Lead.

With one of the nation's top nursing schools.

#10
NIH
FUNDING

Congratulations to our 2020 MNRS Award Winners

Shanina C. Knighton, PhD, RN, Instructor, KL2 Scholar

- New Investigator Award, Health Promoting Behaviors Across the Lifespan Research Interest Group

McKenzie Wallace, BSN, BA, RN, PhD Candidate

- Graduate Research Award, Women's Health & Childbearing Research Interest Group

Carolyn Still, PhD, CNP, MSM, AGPCNP-BC, CCRP, Assistant Professor

- Mid-Career Investigator Award, Health of Diverse Populations Research Interest Group

Eric Barbato, PhD RN, T32 Post-Doctoral Fellow

- Dissertation Award, Symptom Science Research Interest Group

Chao-Pin Hsiao, PhD, RN, Assistant Professor

- Research Publication Award, Symptom Science Research Interest Group
- Mid-Career Investigator Award, Symptom Science Research Interest Group

Joachim G. Voss, Ph.D., RN, ACRN, FAAN, Professor

- Distinguished Researcher Award, Symptom Science Research Interest Group

Richard J Martin PhD, DNP, MBA, RN, CFP®, T32 Post-Doctoral Fellow

- Dissertation Award, Decision-Making Research Interest Group

Grant Pignatiello, PhD, RN, Instructor, KL2 Scholar

- New Investigator Award, Decision-Making Research Interest Group

Explore more at
nursing.case.edu.



FRANCES PAYNE BOLTON
SCHOOL OF NURSING

CASE WESTERN RESERVE
UNIVERSITY

CONGRATULATIONS TO THE 2020 AWARD RECIPIENTS



DISTINGUISHED CONTRIBUTION AWARD

Gwen K. Wyatt, PhD, RN, FAAN, FAPOS

Dr. Gwen Karilyn Wyatt is a professor in the College of Nursing at Michigan State University (MSU). She is known as a leading scholar in the area of supportive care for cancer patients who are going through treatment and into survivorship. Her numerous grants from the National Cancer Institute (NCI) have focused on the evaluation of Complementary and Integrative Health therapies to determine their effectiveness on patient's quality of life, comfort, and symptom outcomes.

Findings from her work on supportive cancer care have been consistently disseminated through top-tiered journals and presentations.

Dr. Wyatt has served as Principal Investigator on nine completed studies over the past 20+ years. She has also been affiliated with the NCI national cooperative where she contributed to numerous studies as the quality of life Co-Investigator. She is currently leading an ongoing NCI study assisting in reducing symptoms and improving quality of life (QOL) for cancer patients with solid tumors undergoing chemotherapy.

One of her recently completed NCI studies focused on symptom management for late-stage breast cancer patients, also using a complementary therapy approach. Her research has enrolled participants nationally with sites ranging from the Midwest including Michigan and the greater Chicago area of Illinois through Northwestern University to western states such as through her affiliation with the University of Arizona. Her research is recognized nationally and internationally for its contribution to supportive care for cancer patients.



DISTINGUISHED SERVICE AWARD

Patricia E. Hershberger, PhD, RN, FNP, FAAN

Dr. Hershberger is an Associate Professor of Nursing and an Affiliate Professor of Medicine at the University of Illinois at Chicago. She leads a stellar multi-disciplinary research team that has received funding from private and federal sources, for example, the National Institute of Nursing Research, the National Institute of Child Health and Human Development, the Association of Women's Health, Obstetric and Neonatal Nurses, Women's Health, Obstetric and Neonatal Nurses, and the International Society of Nurses in Genetics. Findings from her research are shaping clinical practice, driving nurse-led interventions, and informing national and international health policies in the field of assisted reproduction.

Dr. Hershberger's distinguished service to MNRS includes numerous leadership roles such as Decision-Making RIG Chair, RIG Advisory Chair, Board of Directors (BOD) Member-At-Large, BOD liaison to the Emerging Scholars Network (ESN) in their formative years, Midcareer Scholars' Task Force, Chair of the Distinguished Abstract Award Guidelines Committee, and Chair of the Historical Task Force.

Dr. Hershberger's distinguished service to MNRS includes numerous leadership roles such as Decision-Making RIG Chair, RIG Advisory Chair, Board of Directors (BOD) Member-At-Large, BOD liaison to the Emerging Scholars Network (ESN) in their formative years, Midcareer Scholars' Task Force, Chair of the Distinguished Abstract Award Guidelines Committee, and Chair of the Historical Task Force.

Dr. Hershberger would like to thank all MNRS members and especially those who served alongside of her for which she sincerely places all accolades and gratitude for the 2020 MNRS Distinguished Service Award.



LIFETIME ACHIEVEMENT AWARD

Rita Pickler, PhD, RN, FAAN

Dr. Rita Pickler is The FloAnn Sours Easton Professor of Child and Adolescent Health and Director of the PhD & MS in Nursing Science Programs at The Ohio State University College of Nursing. She received her BS and MS in Nursing from the University of North Carolina at Greensboro and her PhD from the University of Virginia. She also holds a post-master's certificate as a pediatric nurse practitioner from Virginia Commonwealth University, where she is a professor emerita.

Dr. Pickler has been studying the care of preterm infants since 1980 and preterm infant feeding care since 1990. Since 2001 her work has included measurement of neurodevelopmental outcomes associated with feeding care and particularly with oral feeding. She has been continuously funded by the National Institutes of Health (NIH) for her research for 20 years. She has served on numerous NIH and organizational research review panels and has just completed a four-year term on the National Advisory Council for Nursing Research at the NIH. She has been teaching and mentoring nurses and nursing students since 1981 and is committed to preparing the next generation of scientists who are interested in improving health outcomes for those most in need.

She is passionate about good science and its implementation into clinical practice. She has been honored for her research accomplishments in many ways, including induction into the American Academy of Nursing and the Sigma Theta Tau International Researcher Hall of Fame. After serving as an editor for the *Journal of Advanced Nursing* for 5 years and Research Department Editor for the *Journal of Pediatric Health Care* for 12 years, she became the editor of *Nursing Research* in January 2018.



HARRIET H. WERLEY NEW INVESTIGATOR AWARD

Lenette M. Jones, PhD, RN, ACNS-BC

Dr. Jones is a behavioral nurse scientist interested in eliminating the health disparities affecting African-American women with hypertension. Her program of research is focused on uncovering the mechanisms – biological, psychological, social, and physical – of self-management interventions for chronic illness. She uses neuroimaging (fMRI) to explore the neuroprocesses associated with self-management behaviors, such as diet, exercise, and medication-taking. She also examines how health information behavior (seeking, sharing, and use) can be enhanced to support blood pressure self-management. Dr. Jones is currently designing and pilot-testing interventions to improve self-management of blood pressure among African American women.

Dr. Jones is an active member of several organizations including: Midwest Nursing Research Society, Society of Behavioral Medicine, and Sigma Theta Tau International. She is also a member of Lambda Chi Chapter, Chi Eta Phi Sorority, Inc. Dr. Jones also participates in community service, examples have included: organizing and providing blood pressure screenings, speaking as a representative of the nursing profession for multiple career day presentations, coaching a basketball team, and volunteering as a helper for computer teachers at a local elementary school.



Join our team and take your research to the next level

Make a difference in nursing and the world by joining our team of talented researchers at the MSU College of Nursing.

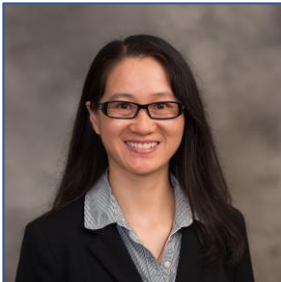
Contact us at CON.nurse@msu.edu for more details on open positions.



College of Nursing
MICHIGAN STATE UNIVERSITY

nursing.msu.edu

CONGRATULATIONS TO THE 2020 GRANT RECIPIENTS



MNRS SEED GRANT

Yun Jiang, PhD, RN, MS

University of Michigan

Tolerance of Toxicities of Oral Anticancer Agents among Older Adults with Advanced Cancers

MNRS FOUNDER'S CIRCLE DISSERTATION GRANT

Laura Beth Kalvas, BSN, MS, PCCN, RN

The Ohio State University

Sleep Disruption and Delirium in Critically Ill Children

MNRS/CANS DISSERTATION GRANT

Jennifer Kowalkowski, RN, MPH, MS

University of Wisconsin – Madison

Examining the Role of Social Support Networks in Farmer HealthMNRS JOSEPH & JEAN BUCKWALTER
DISSERTATION GRANT**Ashjan Babegi, MSN**

Wayne State University

Exploration of Help-Seeking Among Arab-American Women Who Have Experienced Intimate Partner Violence

CONGRATULATIONS TO THE 2020 GRANT RECIPIENTS



MNRS/AURORA HEALTH DISSERTATION GRANT

Alexandra Nowak, JD, BSN

The Ohio State University

Neighborhood Disorder and Epigenetic Regulation of Stress Pathways in Preterm Birth

MNRS/SIGMA RESEARCH GRANT

Katie Donahue, MSN

Saint Louis University

The Experience of First-Time Breastfeeding in Rural Mothers

MNRS/ANF RESEARCH GRANT

Grant Pignatiello, PhD, RN

Case Western Reserve University

A Biobehavioral Exploration of Family Intensive Care Unit Syndrome

University of Illinois at Chicago

PROUD HOST OF MNRS 2020

COLLEGE
OF NURSING



#1

The top nursing school in Illinois for NIH funding

5

Five faculty named to Intl. Nurse Researcher Hall of Fame

29 & 102

29 faculty and 102 alumni are AAN fellows

Learn more about joining UIC as a student or faculty member: go.uic.edu/UICNursing

Chicago | Peoria | Quad Cities | Rockford | Springfield | Urbana

CONGRATULATIONS TO THE 2020 RIG AWARD RECIPIENTS

Acute & Critical-Care Across the Lifespan

New Investigator Award

Heidi Lindroth, PhD, RN

Adolescent Health

New Investigator Award

Alyson Hanish, PhD, MSN, RN

Research Legacy Award

Dianne Morrison-Beedy, PhD, RN, WHNP, FNAP, FAANP, FAAN

Decision Making

New Investigator Award

Grant A. Pignatiello, PhD, RN

Mid-Career Investigator Award

Karen Dunn Lopez, PhD, MPH, RN

Dissertation Award

Richard J. Martin PhD, DNP, MBA, RN, CFP

Family Health

Early Career Investigator Award

Kayla Herbell, PhD, RN

Gerontological Nursing Science

New Investigator Award

Chooza Moon, PhD, RN

PhD Dissertation Award

Mary O. Whipple, PhD, RN

Health of Diverse Populations

Dissertation Award

Nicole L. Pierce, MSN, RN

Mid-Career Investigator Award

Carolyn Harmon Still, PhD, CNP, MSN, AGPCNP-BC

New Investigator Award

Timiya S. Nolan, PhD, APRN-CNP, ANP-BC

Undergraduate Researcher Award

Radia Daud, BSN

Health Promoting Behaviors Across the Lifespan

New Investigator Award

Shanina C. Knighton, PhD, RN

Outstanding Dissertation Award

Mary Hannan, PhD, APRN

Health Systems Policy & Informatics

Dissertation Award

Robin Austin, PhD, DNP, RN-BC

Senior Investigator Award

Amy Vogelsmeier, PhD, RN, FAAN

Nursing Education

Advancement of Science Award

Kristine L'Ecuyer PhD, RN, CNL

Outstanding Dissertation Award

Kelley McGuire PhD, RN

CONGRATULATIONS TO THE 2020 RIG AWARD RECIPIENTS

Palliative End-of-Life Care

Dissertation Award

Maryellen Potts, PhD

Distinguished Researcher Award

Gwen Wyatt, PhD, RN, FAAN, FAPOS

Outstanding Publication Award

Nai-Ching Chi, PhD

New Investigator Award

Megan Miller, BSN, RN, PhD Candidate

Pediatrics

Mid-Career Investigator Award

Kamal Eldeirawi, PhD, RN

Population Health

Distinguished Investigator Award

Cheryl Robertson, PhD, MPH, RN, FAAN

Early Career Award

Dongjuan (Donna) Xu, PhD, RN

Qualitative Methods

Graduate Research Award

Anne W. Shagavah, BSN, MSN, CRNP

Jennifer Kowalkowski, RN, MS, MPH

Research Thru Academic-Clinical Partnerships

Partnership Award

Rush System for Health:

*Center for Clinical Research and Scholarship
(CCRS), College of Nursing, Rush University:*

Mary Heitschmidt PhD, APRN, CCRN-K

Self Care

Dissertation Award

Jennifer O'Connor PhD, RN, CFCN, CNE

Mid-Career Investigator Award

LeeAnne Sherwin, PhD, MS, FNP-BC

New Investigator Award

Timiya S. Nolan, PhD, APRN-CNP, ANP-BC

Symptom Science

Dissertation Award

Eric Barbato, PhD, RN

Distinguished Researcher Award

Joachim Voss, PhD, RN, ACRN

Mid-Career Investigator Award

Chao-Pin Hsiao, PhD

New Investigator Award

Kristin Dickinson, PhD, RN, OCN

Research Publication Award

Chao-Pin Hsiao, PhD

Women's Health and Childbearing

Graduate Research Award

McKenzie Wallace, BSN, BA, RN

New Investigator Award

Yenupini Joyce Adams, PhD, RNC-MNN

Senior Investigator Award

Carmen Giurgescu, PhD, RN, WHNP, FAAN

Undergraduate Research Award

Alyssa Hannon, SRN



Leaders in Nursing Research.

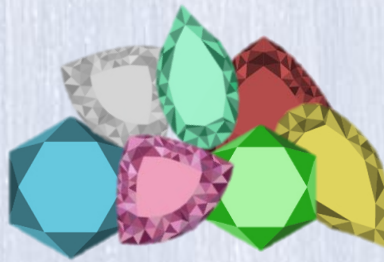
Dr. Andrea Gilmore-Bykovskyi, PhD, RN, studies clinical care delivery and health disparities among people living with, and at risk for Alzheimer's disease and related dementias and their caregivers. Her interdisciplinary program of research is pioneering advances in disease detection, care delivery, and caregiver support that are helping to transform the field of dementia care.

The University of Wisconsin–Madison is a premier nursing research institution and we develop leaders for the profession and society. We offer undergraduate, graduate, and certificate programs. Our areas of excellence include aging, symptom science, pediatrics, and population health.

Learn more about our programs at nursing.wisc.edu



School of Nursing
UNIVERSITY OF WISCONSIN–MADISON



Building a BRILLIANT Community... With Annual Giving Gemstone Society



Diamond Donors
(Annual Gifts of \$5,000+)

Joyce Fitzpatrick



Ruby Donors
(Annual Gifts of \$2,500 - \$4,999)

Kitty Buckwalter



Sapphire Donors
(Annual Gifts of \$1,000 - \$2,499)

Cindy Anderson
Cynthia Arslanian-Engoren
Danielle Dohrmann
Janet Larson
Sally Lusk
Susan Rawl
Juliann Sebastian
Terri Weaver
JoEllen Wilbur



Topaz Donors
(Annual Gifts of \$500 - \$999)

Lauren Aaronson
Diana Biordi
Barb Polivka



Emerald Donors
(Annual Gifts of \$250 - \$499)

Lisa Brodersen
Eileen Collins
Marilyn Frenn
Janean Holden
Barbara Holtzclaw
Jackeline Iseler
Helen Lach
Jiying Ling
Laurel Northouse
Jill Peltzer
Lorraine Robbins
Sharon Tucker
Jean Wyman



Pearl Donors
(Gifts of \$100 - \$249)

Kim Astroth
Kelly Braniff
Colleen Corte
Heather Hardin
Christine Kovach
Karen Monsen
Elizabeth Swanson
Kelly Wierenga

Annual Gifts
up to \$99

Olubunmi Daramola
Kristine L'Ecuyer
Bernadette Melnyk
Pamela McCabe
Christina Sima
Deidre Wipke Tevis

Save the Date

Des Moines



March 24 – 27, 2021

Des Moines Marriott

Many thanks to the
2021 Host School:



College of
Nursing

Groundbreaking research and evidence-based practice to transform healthcare and improve lives

nearly **\$11 million** in sponsored research funding in FY2019

**Martha S. Pitzer
Center for Women,
Children and Youth**



**Center for
Healthy Aging,
Self-Management
and Complex Care**

**Helene Fuld Health
Trust National Institute
for Evidence-based
Practice in Nursing
and Healthcare**



THE OHIO STATE UNIVERSITY

COLLEGE OF NURSING

Transforming health, transforming lives

nursing.osu.edu

Marquette University College of Nursing

**ENERGIZED BY
TEACHING**

**FOCUSED ON
RESEARCH**

**DRIVEN TO SERVICE
WITH DIVERSE,
VULNERABLE
POPULATIONS**

**Now hiring tenure-track nursing faculty
for the following positions:**

- Ascension Wisconsin Sister Rosalie Klein
Professorship — Endowed Chair
- Assistant Professor

employment.marquette.edu



MARQUETTE
UNIVERSITY

**BE THE
DIFFERENCE.**



Researcher Melissa Horning, PhD, RN, PHN, is investigating the impact of a mobile market on health outcomes in communities with poor food access.

Driven to improve lives through research

At the University of Minnesota School of Nursing, our innovative research and evidence-based practice projects are addressing health issues across the life span in local, state, national and global contexts.

Research Areas of Excellence

- » Health promotion among vulnerable populations
- » Prevention and management of chronic health conditions
- » Symptom management
- » Health/nursing informatics and systems innovation



SCHOOL OF NURSING
UNIVERSITY OF MINNESOTA

nursing.umn.edu/research