

*45<sup>th</sup> Annual Research Conference*  
March 24 – 27, 2021



**VIRTUAL CONFERENCE**



# IOWA IS YOUR CAREER DESTINATION

**28**

Tenure-track [faculty](#)

**\$10,295,756**

External funding in [FY2021](#)

**31<sup>st</sup>**

in NIH funding in [2020](#)

## AREAS OF EXCELLENCE

- [Pain, Multimorbidity and Symptom Science](#)
- [Gerontology](#)
- [Health Systems, Technology and Informatics](#)

## TOP-RANKED PROGRAMS

- World-renowned [PhD](#) program  
Contact: Dr. [Stephanie Gilbertson-White](#)
- Cutting-edge [DNP](#) and [MSN](#) programs  
Contact: Dr. [Mary Dirks](#)
- Innovative healthcare [simulation](#) experiences
- [Post-graduate Certificate Programs](#)

## FACULTY OPPORTUNITIES

- [Tenure and Clinical Track openings](#)  
Contact: Dr. [Keela Herr](#)

## OUTSTANDING RESOURCES

- NIH [Clinical and Translational Science Award](#)
- NINR P20 Exploratory [Center for Advancing Multimorbidity Science](#)
- [Csomay Center](#) for Gerontological Excellence
- [Center for Nursing Classification and Clinical Effectiveness](#)
- [Nursing Clinical Education Center](#)

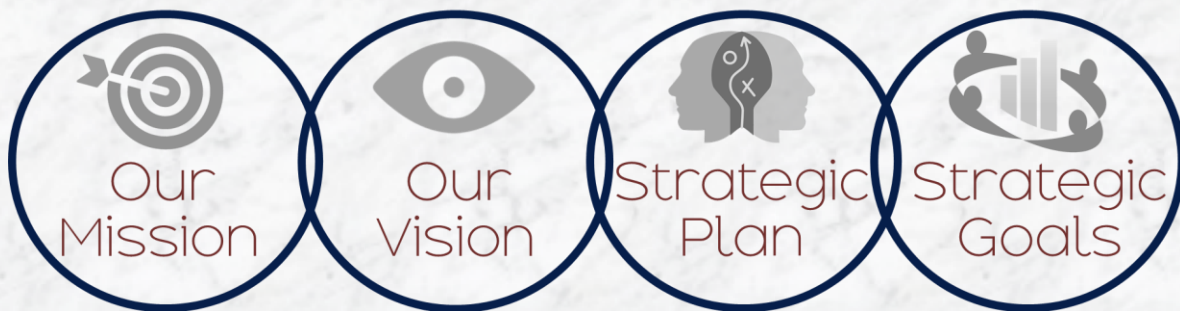
## BUILD A CAREER, BUILD A LIFE

Learn about the [vibrant and inclusive environment](#) that [Iowa City](#) has to offer!

**IOWA**  
**NURSING**

[nursing.uiowa.edu](https://nursing.uiowa.edu)  
[nursing-research@uiowa.edu](mailto:nursing-research@uiowa.edu)





The **MISSION** of the Midwest Nursing Research Society is to advance science, transform practice and enhance careers through a network of scholars.

The **VISION** of the Midwest Nursing Research Society is to be the premiere society that develops scholars, drives science, and leads innovation to improve the health of all people.

The **STRATEGIC GOALS** of the Midwest Nursing Research Society:

**MEMBERSHIP:** *Foster a Diverse Membership of Scholars*

**ENGAGEMENT:** *Develop and engage members across the career trajectory*

**MARKETING/COMMUNICATION/ADVOCACY:** *Increase visibility of the impact of nursing science*

**FINANCIAL:** *Enhance fiscal responsibility, impact of funds, and stewardship of member investment.*



## Annual Research Conference

The Midwest Nursing Research Society's 45<sup>th</sup> Annual Research Conference convenes VIRTUALLY on March 24 – 27, 2021.

The theme for the 2021 conference is “**Team Science: Advancing Culturally Responsive Research to Improve Health Outcomes**”. The learner outcomes for the conference are:

- Identify interdisciplinary and interprofessional team approaches to designing and implementing best practices and culturally appropriate interventions to eliminate health disparities from research to practice
- Discuss solutions for social determinates of health in closing the gap in health inequities and achieving cultural competence through the translation of best science to practice for individuals and communities



# PRESIDENT'S MESSAGE



Dear Colleagues,

On behalf of the Midwest Nursing Research Society Board of Directors, I want to thank the more than 1,300 dedicated members for ensuring that MNRS continues to be the premiere regional nursing research society. Last year, MNRS pivoted to a virtual conference in three weeks in response to the COVID-19 pandemic. While we know a virtual conference will NEVER replace all of the character of an in-person conference, the MNRS Board has made the difficult decision to go virtual again in 2021. MNRS is made up of frontline healthcare workers, faculty, students, nursing scientists and clinical scholars devoted to nursing research and implementation. Knowing what we know about this pandemic, MNRS could not in good faith bring more than 1,000 conference attendees together safely. However, we are committed to ensuring that our members continue to have a place to share science, network with peers, and collaborate.

Each year I am astounded by the research and scholarship that our members are sharing and this year is proving to be no different. As the need for dissemination has never been greater, we cordially invite you to join us virtually for the MNRS 45<sup>th</sup> Annual Research Conference in 2021. The conference will take place March 24-27. We would like to thank our host school, the University of Iowa, and all the schools and organizations who participate as sponsors, advertisers, and exhibitors. The conference would not have been possible without their generous support.

I would like to extend my appreciation to the Program Planning Committee and volunteers who contributed countless hours to ensuring the success of the conference. Under the leadership of Dr. Julie Anderson, the Program Planning Committee has organized a stimulating conference that will provide opportunities for attendees to hear about cutting-edge research and evidence-based practice, engage in thoughtful discussions, network with fellow nursing scholars, and learn about emerging research methods on a platform that will enhance each attendee's virtual experience.

Highlights of the conference include paper presentations, poster discussions, and poster presentations that cover all nineteen (19) of the MNRS Research Interest Groups. Additionally, we have Dr. Wrenetha Julion from Rush University, College of Nursing, and Dr. Phyllis Sharps from John Hopkins University providing the opening and closing keynote presentations focused on the 2021 Conference theme: *Advancing Nursing Research with Diverse Populations*. MNRS will continue to provide outstanding career development guidance and learning opportunities for nurse scientists and scholars at all career levels – from students and junior investigators to mid-career and senior scientists.

We encourage you to join us for the 2021 Annual Research Conference and take full advantage of opportunities to hear the latest in nursing research and network with old and new colleagues and friends. Enjoy a conference in pajama pants and slippers from the comfort of your own home or office as well as all the benefits of attending the MNRS 45<sup>th</sup> Annual Research Conference!

A handwritten signature in cursive script that reads "Cindy M. Anderson". The ink is dark and the signature is fluid.

**Cindy Anderson, PhD, RN, WHNP-BC, ANEF, FAHA, FNAP, FAAN**  
**President, Midwest Nursing Research Society**



# 2021 – 2021

## BOARD LEADERSHIP

### S O C I E T Y

#### **PRESIDENT**

Cindy Anderson, PhD, RN, WHNP-BC, ANEF, FAHA, FNAP, FAAN  
*The Ohio State University*

#### **PRESIDENT-ELECT**

Kathleen “Kitty” Buckwalter, PhD, RN, FAAN  
*University of Iowa/University of Oklahoma*

#### **VICE PRESIDENT**

Marilyn Frenn, PhD, RN, ANEF, FTOS, FAAN  
*Marquette University*

#### **TREASURER**

Sharon Tucker, PhD, RN, PMHCNS-BS, FAAN  
*The Ohio State University*

#### **MNRS FOUNDATION PRESIDENT**

JoEllen Wilbur, PhD, RN, FAAN  
*Rush University*

#### **SECRETARY**

Amy Jude Hoffman, PhD, RN, MSN  
*The University of Nebraska Medical Center*

#### **BOARD DIRECTOR-AT-LARGE**

Kamal Eldeirawi, PhD  
*University of Illinois at Chicago*

#### **BOARD DIRECTOR-AT-LARGE**

Heather K. Hardin, PhD, RN  
*Case Western Reserve University*

#### **BOARD DIRECTOR-AT-LARGE**

Sheria Robinson-Lane PhD, RN, MHA, MSN  
*University of Michigan*

#### **STUDENT REPRESENTATIVE**

Tanya Trotter, APRN, CNS-BC  
*University of North Dakota*

#### **PRESIDENT**

JoEllen Wilbur, PhD, RN, FAAN  
*Rush University*

#### **PRESIDENT-ELECT**

Mary Anthony, PhD, RN  
*Kent State University*

#### **SECRETARY/TREASURER**

Robert Topp, PhD, RN  
*The University of Toledo, College of Nursing*

#### **MNRS TREASURER LIAISON**

Sharon Tucker, PhD, RN, PMHCNS-BS, FAAN  
*The Ohio State University*

#### **BOARD TRUSTEE**

Cynthia Arslanian-Engoren, ACNS-BC, FAAN, FAHA, PhD  
*University of Michigan*

#### **BOARD TRUSTEE**

Patricia Hershberger, ANP, FNP-BC, FAAN  
*University of Illinois at Chicago*

#### **BOARD TRUSTEE**

Ann Marie McCarthy, PhD, RN, FNASN, FAAN  
*University of Iowa*

#### **BOARD TRUSTEE**

Jean F. Wyman, PhD, CNP, RN, FAAN  
*University of Minnesota - School of Nursing*

#### **BOARD TRUSTEE**

Joachim Voss, PhD, ACRN, RN  
*Case Western Reserve University*

#### **STUDENT REPRESENTATIVE**

Grant Pignatiello, PhD, RN  
*Case Western Reserve University*

### F O U N D A T I O N

# 2021 PROGRAM PLANNING COMMITTEE

## **CHAIR**

**Julie Anderson, CCRC, PhD, RN**  
Winona State University

## **CHAIR- ELECT**

**Joachim G Voss, ACRN, PhD, RN, RN**  
Case Western Reserve University

## **IMMEDIATE PAST CHAIR**

**Susan Breitenstein, PhD, RN, FAAN**  
The Ohio State University

## **BOARD LIASON**

**Marilyn Frenn, CNE ANEF, FTOS, PhD, RN, FAAN**  
Marquette University

## **MEMBERS-AT-LARGE**

**Nancy Albert, PhD, CCNS, NE-BC, CCRN, FAHA, FAAN**  
Cleveland Clinic Foundation

**Meriam Caboral-Stevens, PhD, RN, NP-C**  
Eastern Michigan University

**Kimberly Dillon-Bleich, PhD**  
Ursuline College

**Christine Eisenhauer, PhD, CNE, ARNP-CNS**  
University of Nebraska Medical Center

**Samantha Fischbach, MSNEd**  
South Dakota State University

**Barbara Fowler, BSN, MSN, PHCNS-BC, PhD**  
Wright State University

**Carol Geary, PhD**  
University of Nebraska Medical Center

**Mikel Hand, EdD, RN, OCN, NE-BC, NEA-BC**  
University of Southern Indiana

**Teresa S Johnson, PhD, RN**  
University of Wisconsin - Milwaukee

**Cheng-Ching Liu, PhD**  
Michigan State University

**Angela Opsahl, DNP, RN, CPHQ**  
Indiana University School of Nursing

**Laura Remy, MPH, BSN, RN**  
University of Missouri

**Lorraine Robbins, PhD, RN, FNP-BC, FAAN**  
Michigan State University

**Stacey Sears, CPNP-AC**  
Michigan Medicine

**Elizabeth Swanson, PhD, RN**  
University of Iowa

**Roxanne Vandermause, PhD**  
University of Missouri - St. Louis

**Linda Hand, PhD**  
University of Iowa (2021 Host School)

**Barbara St. Marie, PhD, AGPCNP, FAANP**  
University of Iowa (2021 Host School)

**Eileen Collins, PhD, RN, ATSF, FAAN**  
University of Illinois at Chicago (2022 Host School)

**Karen Saban, PhD, RN, APRN, CNRN, FAHA, FAAN**  
Loyola University Chicago (2022 Host School)

**JoEllen Wilbur, PhD, APN, CNP, RN, FAAN**  
Rush University Medical Center (2022 Host School)



Many thanks to the  
2021 Conference Host Schools:

The Big Ten Academic Alliance, Schools of Nursing



**School of Nursing**  
UNIVERSITY OF WISCONSIN-MADISON



UNIVERSITY OF NEBRASKA MEDICAL CENTER™  
**COLLEGE OF NURSING**



**THE OHIO STATE UNIVERSITY**  
COLLEGE OF NURSING



**RUTGERS**  
School of Nursing

# KEYNOTE SPEAKERS



## **Opening Keynote Speaker: March 25, 2021**

**Wrenetha Julion, PhD, MPH, RN, CNL, FAAN**

**Professor, Rush University**

***Team Science: Advancing Health Equity through the Lens of Cultural Sensibility***

**Wrenetha Julion, PhD, MPH, RN, CNL, FAAN** is a researcher/educator at Rush University College of Nursing and the Chairperson of the Department of Women, Children & Family Nursing. Her research has focused on supporting the health and wellbeing of families, with an intentional emphasis on promoting and sustaining the involvement of fathers in the lives of their children. With the guidance of a fathers' advisory council, Dr. Julion and her team developed and tested a culturally congruent fatherhood Intervention for African American fathers who do not live in the household with the young child. This intervention, Building Bridges to Fatherhood was tested in a NIH-funded randomized clinical trial. Dr. Julion's research has also focused on supporting parents who are raising young children in low-income communities. She is a co-author of the Chicago Parent Program, a parenting program designed to meet the needs of a culturally and economically diverse audience. The Chicago Parent Program was developed in collaboration with parents of young children to address parents' issues of greatest concern.

Dr. Julion is a past recipient of the Robert Wood Johnson Foundation's New Connections Initiative, a member of the 2<sup>nd</sup> cohort of Macy Faculty Scholars and a Fellow in the American Academy of Nursing. She is a standing member of the NIH Clinical Management of Patients in Community-based Settings (CMPC) Study Section. Her recent honors include: 2021 – Recipient of Rush University College of Nursing Deans Award for Excellence; 2018 – Recipient of Rush University Mentor of the Year Award; 2017 – Recipient of Health & Policy Research Group Dr. Steve Whitman Research Award; 2017 – Recipient of Rush University College of Nursing MVP Award for Research and Scholarship; 2015 – Induction into the Southern Illinois University-Edwardsville School of Nursing Alumni Hall of Fame. She is on the Board of Directors of PCC Community Wellness Center, a network of 12 health centers in Chicago's West Side and nearby suburbs. Dr. Julion earned a BSN from Southern Illinois University-Edwardsville, joint MSN-MPH from the University of Illinois at Chicago, and PhD from Rush University College of Nursing.





## **Closing Keynote Speaker: March 27, 2021**

**Phyllis Sharps, PhD, RN, FAAN**

**Professor, The John Hopkins University**

***Building Community and Academic Partnerships: Team Science a Pathway for Enhancing Diversity and Inclusion***

**Phyllis Sharps, PhD, RN, FAAN**, is the Elsie M. Lawler Endowed Chair, Associate Dean for Community Programs and Initiatives and Professor at the Johns Hopkins University School of Nursing. Dr. Sharps is the director for the

Center for Community Innovations and Scholarships, which two community nurse lead managed centers for the School of Nursing (East Baltimore Community Nurse Centers), and the Health and Wellness Program at the Henderson Hopkins Partnership School. She has published numerous articles on improving the reproductive health, reducing violence among African American women. Her practice and research examines the consequences of intimate partner violence (IPV) against pregnant and parenting women, specifically, the effects of IPV on the physical and mental health of pregnant women, infants and very young children. She has been the principal investigator for \$3.5 M 5-year research grant funded by NINR, Domestic Violence Enhanced Home Visitation – DOVE, which tested a public health nurse home visit intervention to reduce effects of IPV among pregnant women and their newborns. Currently she is the principal investigator for a second 5-year NIH/NCID \$4.2 M grant “Perinatal Nurse Home Visitation Enhanced with mHealth”, which tests the use of computer tablets for screening and intervening for IPV in the home. Dr. Sharps received a 2 year, \$1.2M grant from the Health Services Resources Administration (HRSA), “Advanced Nurse Education Workforce (ANEW)”, which provides scholarships to primary care nurse practitioner students preparing to work in underserved areas with underserved populations. Dr. Sharps has published more than 100 articles, 1 book and 10 book chapters. She has presented peer reviewed papers at national and international conferences. In 2009, Dr. Sharps gave testimony before the U.S. Congress, including then Speaker of the House Nancy Pelosi, on the need to reform health care to provide better access to evidence-based nursing practice for pregnant women and new mothers. Other important policy initiatives informed by contributions from her multidisciplinary research teams have resulted in appointments to the Institute of Medicine (now National Academy of Medicine) Board on Military and Veterans Health and the IOM Committees on the Qualifications of Professionals Providing Mental Health Counseling Services under TRICARE. Appointment to the veterans’ health committee was in recognition of her work as a nurse in the military, her women’s health expertise, and her study of abuse during pregnancy in military women.

Dr. Sharps is a Fellow of the American Academy of Nursing, a 2013 inductee into the International Nurse Researcher Hall of Fame, Sigma Theta Tau International Nursing Honor Society and 2015 recipient of the Visionary Pioneer Award from the University Of Maryland School Of Nursing. She received her BSN from University of Maryland School of Nursing, MS (Maternal and Child Health) from University of Delaware School of Nursing and her doctorate from the University Of Maryland School Of Nursing. She also completed a fellowship in adolescent health at the University Of Maryland School Of Medicine.

# MNRS Career Center



**Matching fantastic job opportunities  
with amazing talent!**

Please visit website: <https://mnrs-jobs.careerwebsite.com/>





# RUTGERS

## School of Nursing

### Associate Dean Division of Nursing Science

The School of Nursing at Rutgers, The State University of New Jersey, invites candidates and referrals for a highly accomplished, visionary leader to serve as Associate Dean, Division of Nursing Science (Associate Professor or above). The position is based in Newark.

#### **Top-Ranked Nursing School at a Leading Research University**

Rutgers is a member of the Big Ten Academic Alliance, a consortium of 14 world-class American research universities. Experiencing an upward trajectory in NIH funding, and ranked in the nation's top 20 for our DNP and MSN programs, Rutgers School of Nursing educates a highly diverse population of 1,800 students.

#### **Vision and Leadership for Nursing Science**

As Associate Dean for our school's Division of Nursing Science, you will oversee our PhD program, established more than 30 years ago as the first nursing doctorate program in New Jersey. You'll provide vision and leadership for our schoolwide research enterprise, including oversight of our Centers of Excellence and faculty mentorship initiatives, as well as joint oversight of our Office of Contracts and Grants. Our research-focused environment offers a full-range of resources to advance nursing science.

#### **For Information and To Apply**

Rutgers offers competitive salaries and excellent benefits. As an Equal Opportunity/Affirmative Action employer, compliant with the ADA, we embrace and value diversity.

For more information about this position or to make a referral, please contact

**Christine Duggan, Associate Director of Faculty and Staff Resources:**

[christine.duggan@rutgers.edu](mailto:christine.duggan@rutgers.edu)

Full details and online application are available on our website.

[nursing.rutgers.edu/careers](https://nursing.rutgers.edu/careers)

# CONFERENCE GENERAL INFORMATION



## VIRTUAL CONFERENCE

The 45<sup>th</sup> Annual Research Conference will again be held virtually. While we know the virtual conference will NEVER replace an in-person conference experience, we want to ensure the health and safety of the MNRS members and conference attendees during this unprecedented global pandemic.

MNRS learned much from the 2021 Annual Research Conference and is proud to launch a new conference platform that will streamline the attendee experience, enhance networking opportunities, and provide a new virtual poster experience for presenters.



## PRE-CONFERENCE WORKSHOPS

A pre-conference workshop will be offered on **Wednesday, March 24, 2021**. This workshop is ticketed and there is an additional registration fee to attend. The workshop will be held live-time but virtually. Block your calendar, plan to join, and choose your preferred location for viewing.



## NEW MEMBERS/FIRST-TIME ATTENDEES

New members and first-time attendees are invited to an MNRS Orientation on Wednesday, March 24, 2021. The time will be announced with the schedule.



## JOIN THE CONVERSATION

MNRS has gone social and we invite you to join the online conversation. Please be sure to follow/like the following MNRS social media accounts: **@MidwestNursing @MidwestNursingResearchSociety @TheMNRS**



And do not forget to use the hashtag **#MNRS2021** if you post pictures or comments about the 2021 Annual Research Conference.



# CLEVELAND STATE UNIVERSITY

## APPLY NOW FOR OUR DOCTOR OF NURSING PRACTICE!

- Family Nurse Practitioner – post BSN
- Psychiatric/Mental Health Nurse Practitioner – post BSN
- Health Systems Leadership – post MSN

*Accepting applications now for Fall 2021*

## CSU OFFERS A FULLY ONLINE MASTER OF SCIENCE IN NURSING DEGREE WITH FOUR TRACKS TO CHOOSE FROM:

- Education
- Clinical Nurse Leader
- Forensics
- Specialized Population

*Accepting applications now for Fall 2021*

## LOOKING TO BRIDGE FROM YOUR ADN TO A BSN? CSU OFFERS A FULLY ONLINE RN TO BSN PROGRAM

*Enrollment is year round*

## PRE-LICENSURE PROGRAMS TO EARN YOUR BSN

- 18 month Accelerated BSN
- Traditional Daytime BSN
- Evening/Weekend BSN



School  
of Nursing

TO APPLY VISIT OUR WEBSITE: [www.csuohio.edu/nursing](http://www.csuohio.edu/nursing)

FOR MORE INFORMATION ON ANY OF OUR NURSING PROGRAMS EMAIL US AT: [sonadvising@csuohio.edu](mailto:sonadvising@csuohio.edu)

# Telehealth for Health Care Professionals

**Three course start times:**


March 15th, May 10th and  
July 12th

Make  
Your World  
More

Ursuline College   
[ursuline.edu/breen](http://ursuline.edu/breen)







**Dr. Lisa Bratzke, PhD, RN, ANP-BC, FAHA**, studies accelerated cognitive aging. She is interested in identifying risks for accelerated cognitive aging in older adults with heart disease and multiple chronic conditions. Dr. Bratzke is examining the effects of accelerated cognitive decline on functional status and self-management, two important factors related to an older adult's ability to live independently.

# Leaders in Nursing Research.

**The University of Wisconsin–Madison** is a premier nursing research institution and we develop leaders for the profession and society. We offer undergraduate, graduate, and certificate programs. Our areas of excellence include aging, symptom science, pediatrics, and population health.

Learn more about our programs at [nursing.wisc.edu](https://nursing.wisc.edu)



**School of Nursing**  
UNIVERSITY OF WISCONSIN-MADISON



# 45th ANNUAL RESEARCH CONFERENCE

## VIRTUAL CONFERENCE

The 45th Annual Research Conference has transitioned to a VIRTUAL experience. All the science sessions will be hosted within the conference hall and will run March 24 - 27, 2021, as originally scheduled. All session links will be shared with presenters and attendees before the conference launches. Please note that sessions will be recorded and remain live in a conference library for **60 days** in case you are not able to attend the conference on the dates scheduled.

## POSTER PRESENTATIONS

All poster presentations will be available in the e-poster gallery for conference attendees to view at their convenience. [Click here to access the gallery](#). Poster presenters can be contacted during their assigned session using the “Join Online Meeting” link. This link will bring you to the presenter’s personal Zoom meeting room or email address depending on which they selected as their preferred communication method. Authors are asked to be in attendance during the poster session to answer questions about your poster.

### [POSTER SESSION HOURS](#)

**Thursday, March 25, 2021: 3 PM – 4:30 PM CDT**

**Friday, March 26, 2021: 12:30 PM – 2 PM CDT**

## STUDENT POSTER COMPETITION

The Student Poster Competition will transition to the virtual format. Student work will be judged online using the e-poster gallery and winners will be announced via a conference wide email during the schedule session times, as well as, during the Business Meeting and Awards Ceremony.

To foster discussion and feedback regarding posters, students are asked to be in attendance to their personal Zoom room during the assigned poster session to answer questions about their science.

**BSN & MN/MSN: Thursday, March 25, 2021: 3 PM – 4:30 PM CDT**

**PhD & DNP: Friday, March 26: 12:30 PM – 2 PM CDT**

## NETWORKING

Networking is an essential part of the MNRS Annual Research Conference. Please be sure to schedule collaborative meetings and discussions throughout the conference by inviting attendees to join you in a personal Zoom meeting room.

### **Zoom Personal Meeting Room:**

- ❖ Go to [www.zoom.us](https://www.zoom.us)
- ❖ Click on the blue box in the top right side of the screen “Sign-Up. It’s Free”
- ❖ Enter your email address
- ❖ Wait for the confirmation email and activate your account
- ❖ Login and view your profile to see your personal meeting room link.





Join our team.

# Loyola University Chicago School of Nursing

The Loyola University Chicago Marcella Niehoff School of Nursing (MNSON) seeks dynamic, visionary faculty to serve in two new leadership positions.

## **Associate Dean for Inclusive Excellence**

This new position brings exciting opportunities to create a collaborative vision for inclusive excellence that transcends all aspects of the school and beyond.

## **Associate Dean for Innovative Partnerships and Faculty Practice**

This new position brings exceptional opportunities for providing strategic vision and leadership for faculty practice and community and academic practice partnerships at the local, regional, state, national, and global levels.

We also have a position for a **Psychiatric and Mental Health Nursing Faculty**, for appointment at the Clinical Assistant Professor rank or higher based on the applicant's program of scholarship and teaching experience.

**APPLY TODAY AT** [LUC.edu /nursing/facultyandstaff/joinourteam/](https://luc.edu/nursing/facultyandstaff/joinourteam/)



M A R C E L L A  
**NIEHOFF**  
SCHOOL of NURSING

### Moving a Project to Publication

**Thursday, March 25, 2021: 9:45 AM - 11:15 AM**

Authors experience varied publication challenges. This MNRS editors' special session will focus on four manuscript development difficulties: converting dissertations to publishable manuscripts, developing papers from conference podium and poster presentations, creating manuscripts from large research projects, and crafting manuscripts that address methodological challenges.

**Speakers:**

Vicki Conn, Rita Pickler, Elaine Miller, and Maithe Enriquez

### Transformation Related to COVID 19: Impact on Mental Health and Social Isolation – Experience of Big 10 Nursing Programs

**Thursday, March 25, 2021: 1:30 PM – 3:00 PM**

The purpose of this session is to share the experience of the Big 10 nursing programs related to the impact of COVID-19 on student and faculty mental health and the outcomes of social isolation. Research will be presented on the prevalence of mental health issues and experience of social isolation. The nature of emotional distress and loneliness associated with the pandemic among nursing worldwide and interventions will be presented. The long-term impact and need to address an impending mental health crisis will be considered.

**Speakers:** Linda Scott, Connie Delaney, Robin Newhouse, Bernadette Melnyk, Randolph Rasch, Juliann Sebastian, Terri Weaver

### Finding, Accessing, and Exploring Databases Useful for Secondary Analysis in Nursing Research

**Friday, March 26, 2021: 8:00 AM - 9:30 AM**

In this session, we will discuss how to find, access, and being to explore datasets to conduct secondary analysis. We will provide a list of about 50 datasets especially relevant to nursing research, discuss through hands on examples how to access, do the minimal necessary programming needed to save, and again, through hands on examples, learn about reviewing codebooks to determine what variables are present, evaluate the sample and methods, and begin to conduct analyses to answer one's research questions.

**Speaker:**

Rick Zimmerman

### National Institute of Nursing Research Special Session

**Friday, March 26, 2021: 10:00 AM - 11:30 AM**

This session will provide an overview of current activities at the National Institute of Nursing Research. The Institute Director, Dr. Shannon Zenk, will provide welcoming remarks and Institute updates. Program Directors Drs. Kris Bough, Rebecca Henry and Martha Matocha will then outline current research program priorities and point attendees to resources and information that can be used to apply for NIH funding. There will be an opportunity for questions and answers.

**Speakers:**

Kristopher Bough, Shannon Zenk, Martha Matocha, Rebecca Henry



# 45th ANNUAL RESEARCH CONFERENCE

*Links to join sessions are found in the MNRS Virtual  
Conference Hall*

## Midcareer Nurse Scholars: Maintaining the Right Balance in the Era of the COVID-19 Crisis

**Friday, March 26, 2021: 4:45 PM - 6:15 PM**

In this session, we will have a panel of prominent nurse scientists who will present about their career trajectory and share lessons-learned about their journey as research scientists and how to navigate the different priorities even during challenging times. Participants will have the opportunity to ask questions, receive feedback, and share experiences related to their careers and how to manage during these uncertain and challenging times of Covid-19.

### **Speakers:**

Kamal Eldeirawi, Julie Zerwic, Gwen Wyatt,  
Patricia Hershberger, Rita Pickler

## Junior Faculty Career Development: Being Successful in Scholarly Writing and Publishing for Advancing Academic Career

**Saturday, March 27, 2021: 8:00 AM - 9:30 AM**

This session is designed to assist junior faculty to develop strategies for developing scholarly writing and publishing; articulating time and resource management tips for scholarly writing and publication; and strategies for addressing manuscript authorship, resubmission, and rejection.

### **Speakers:**

Yvonne Lu, Joseph Perazzo, Sheri Robb, Kristin Stegenga, Gordon Gillespie

## A Fulbrighter's Journey

**Saturday, March 27, 2021: 10:00 AM - 11:30 AM**

Dr. Alexander is a Fulbright Alumni Ambassador for the Fulbright Scholars program. Fulbright Ambassadors are Fulbright Alumni who share Fulbright experiences and acquaint anyone interested in a Fulbright with the process. Alexander will share experiences from his 2016-2017 Fulbright to Sydney Australia at Macquarie University and New Zealand. Experiences include: Mixed methods research involving 45 aged care administrator interviews in 4 states, a regional aged care informatics survey, and national presentations to ministry of health.

### **Speaker:**

Gregory Alexander



# THANK YOU TO OUR 2021 SPONSORS & EXHIBITORS!



COUNCIL FOR THE  
ADVANCEMENT OF  
NURSING SCIENCE



Sinclair School of Nursing  
*University of Missouri Health*



SCHOOL OF NURSING  
OAKLAND UNIVERSITY



CHAMBERLAIN  
UNIVERSITY

UMSL | Nursing  
University of Missouri–St. Louis



IOWA  
NURSING



kurin®

BARNES JEWISH  
College  
Goldfarb School of Nursing  
BJC HealthCare



RUTGERS  
School of Nursing

UNIVERSITY OF  
LOUISVILLE  
SCHOOL OF NURSING



THE OHIO STATE UNIVERSITY  
COLLEGE OF NURSING



School of Nursing  
UNIVERSITY OF WISCONSIN-MADISON

EASTERN  
MICHIGAN UNIVERSITY  
SCHOOL of NURSING

Ursuline  
The Breen School of Nursing

Cleveland State  
University  
School of Nursing

## The PhD in Nursing program at Case Western Reserve University's Frances Payne Bolton School of Nursing boasts a rich tradition of producing the nation's top nurse scientists.

From our research affiliations with some of the best hospitals in the United States to our world-renowned faculty who will serve as your mentors, we offer the resources you need to graduate ready to shape the future of healthcare research and scholarship.

Choose from five research focus areas:

- Symptom Science
- Family/Community Care
- Aging Across the Lifespan
- Self-Management of Health and Illness
- Neuroscience

Interested in earning your PhD in Nursing? Learn about funding opportunities and our Legacy Fellows and Moritz Scholarship at [case.edu/nursing/phd](http://case.edu/nursing/phd)



FRANCES PAYNE BOLTON  
SCHOOL OF NURSING  
CASE WESTERN RESERVE  
UNIVERSITY

UMC 6705-01-2021

## CLEVELAND STATE UNIVERSITY

**Apply Now for Open Faculty Opportunities - Full Time (9-month) tenure-track appointments beginning on August 16, 2021 for the following positions:**

**Assistant/ Associate Professor (PhD) or Clinical Assistant/Associate Professor (DNP) in Pediatrics-Adolescence:** Minimum Qualifications: A Doctorate in Nursing (DNP or PhD) with at least two years clinical nursing experience in caring for children and adolescents. PhD must be earned by July 1, 2021. Candidates who are "all but dissertation" (ABD) are eligible for hire as an instructor until PhD degree is awarded. DNP degrees must be awarded within one year of hire date.

**Assistant/Associate Professor (PhD) or Clinical Assistant/Associate Professor (DNP) in Maternal-Infant:** Minimum Qualifications: A Doctorate in Nursing (DNP or PhD) with at least two years clinical nursing experience caring for maternal and infant dyads. PhD must be earned by July 1, 2021. Candidates who are "all but dissertation" (ABD) are eligible for hire as an instructor until PhD degree is awarded. DNP degrees must be awarded within one year of hire date.

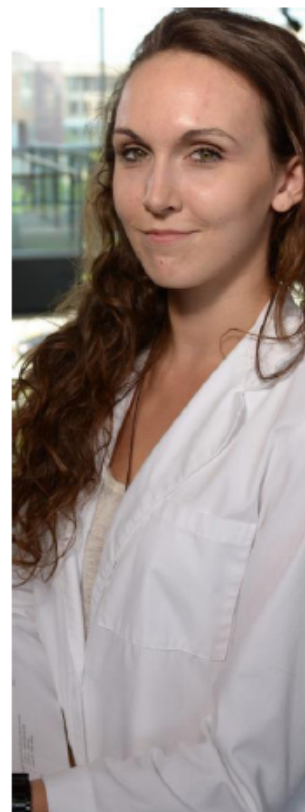
**Assistant Professor (PhD) or Clinical Assistant Professor (DNP) in Adult Health:** Minimum Qualifications: A Doctorate in Nursing (DNP or PhD) with at least two years clinical nursing experience in caring for adult clients. PhD must be earned by July 1, 2021. Candidates who are "all but dissertation" (ABD) are eligible for hire as an instructor until PhD degree is awarded. DNP degrees must be awarded within one year of hire date.

**Eligibility for Ohio Nursing License** as a registered nurse is a requirement with a record of clinical practice excellence.



School  
of Nursing

TO APPLY VISIT OUR WEBSITE: <http://hrjobs.csuohio.edu/postings>





# ACKNOWLEDGEMENTS

## ABSTRACT REVIEWERS

Kristen Abbott-Anderson  
Nadin Abdel Razeq  
Alham Abuatiq  
Katharine Adelstein  
Windy Alonso  
Angela Andrews  
Mary Anthony  
Wendy Bauer  
Amy Berkley  
Rozina Bhimani  
Lisa Blair  
Marge Bott  
Melvina Brandau  
Lisa Brannack  
Susan Breitenstein  
Lisa Brodersen  
Gloria Brummer  
Susan Buchholz  
Sherleena Buchman  
Wilma Calvert  
Mei-Wei Chang  
Seung Hee Choi  
Andrea Cohee  
Regina Conway-Phillips  
Rebecca Davis  
Kimberly Dillon-Bleich  
Jennifer Doering  
Stephanie Edmonds  
Cynthia Elverson  
Anne Ersig  
Naomi Ervin  
Diane Forsyth  
Phyllis Gaspar  
Timothy Gaspar  
Joely Goodman  
Thao Griffith  
Kawther Hamash  
Mikel Hand  
Linda Liu Hand  
Mary Beth Happ

Ellen Harper  
Candace Harrington  
Jennifer Heck  
Kayla Herbell  
Barbara Holtzclaw  
Christine Horvat Davey  
Luz Huntington Moskos  
Yun Jiang  
Krista Jones  
Bincy Joshwa  
Alice Kindschuh  
Colleen Klein  
Rebecca Koszalinski  
Kevin Kupzyk  
Stacey Lerret  
Daniel Liezeit  
Jiyong Ling  
Wen Liu  
Marian Liu  
Keisha Lovence  
Barbara McMorris  
Darcy Nelson  
Geri Neuberger  
Sarah Newton  
Marliese Nist  
Nancy Novotny  
Jeanette Olsen  
Angela Opsahl  
Jennifer O'Rourke  
Rhoda Owens  
Jill Peltzer  
Amy Petrinec  
Linda Piacentine  
Kathleen Poindexter  
Barbara Polivka  
Sheri Rowland  
Joanne Schneider  
Debra Schutte  
Yulia Semeniuk  
Patricia Sharpnack  
Qiuhua Shen  
LeeAnne Sherwin

Sandra Siedlecki  
Robert Topp  
Susan Vonderheid  
McKenzie Wallace  
Ya-Fen Wang  
Mary Whipple  
Rachel Wion  
Teresa Wood  
David Woodruff  
Dongjuan (Donna) Xu  
Pi-Ming Yeh  
Jaclene Zauszniewski

Jennifer O'Rourke  
Patricia Pence  
Celeste Phillips  
Karen Rose  
Lynn Roser  
Joanne Schneider  
Tamra Shea  
Sandra Siedlecki  
Briana Snyder  
Stephanie Stewart  
Leeza Struwe  
Annie Thomas  
M Cecilia Wendler  
Celia Wills  
Deidre Wipke-Tervis

## GRANT REVIEWERS

Alham Abuatiq  
Windy Alonso  
Barbara Bowers  
Kathleen Buckwalter  
Margaret Campbell  
Christine Fortney  
Helen Fu  
Mary Gergis  
Barbara Giambra  
Carmen Giurgescu  
Lynne Hall  
Frances Hardin-Fanning  
Kayla Herbell  
Luz Huntington-Moskos  
Debra Jansen  
Teresa Jerofke-Owen  
Yun Jiang  
Julie Kennedy  
Rebecca Koszalinski  
Kevin Kupzyk  
Nasreen Lalani  
Wen Liu  
Diane Mahoney  
Masako Mayahara  
Barbara McMorris

## MODERATORS

Cindy Anderson  
Julie Anderson  
Susie Breitenstein  
Mikel Hand  
Teresa Johnson  
Colleen Kordish  
Laura Remy  
Sharia Robinson-Lane  
Karen Saban  
Annie Thomas  
Sharon Tucker



# Congratulations

to our 2021 MNRS award winners, grant recipients  
and presenters who are making an impact on nursing  
science and advancing the health of our communities.



**Wrenetha Julion, PhD, MPH, RN, CNL, FAAN**

Professor and Chair, Department of Women, Children and Family Nursing

Keynote Speaker

*Team Science: Advancing Health Equity through the Lens of Cultural Sensibility*



**Shannon Halloway, PhD, RN**

Assistant Professor

MNRS Harriet H. Werley New Investigator Award

Health Promoting Behaviors Across the Lifespan: New Investigator Award



**Masako Mayahara, PhD, RN, CHPN, FPCN**

Associate Professor

Palliative & End-of-Life Care: Mid-Career Investigator Award

Symptom Science: Mid-Career Investigator Award



**Meghan Garland, CNM, APRN-C**

PhD Student

MNRS/Aurora Health Dissertation Grant Recipient

Learn more about nursing  
research and programs at

[Rushu.rush.edu/nursing](https://Rushu.rush.edu/nursing)



@RushUNursing



**RUSH UNIVERSITY**  
COLLEGE OF NURSING

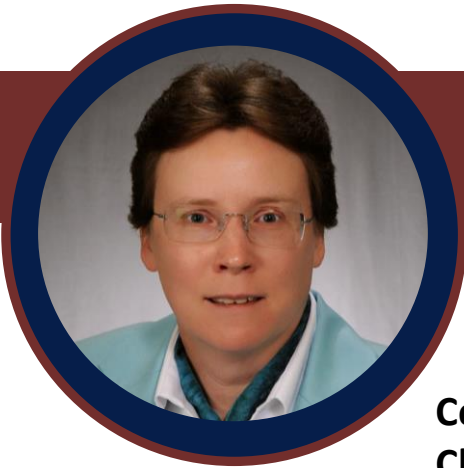
# CONGRATULATIONS 2021 AWARD RECIPIENTS



## DISTINGUISHED CONTRIBUTION AWARD

**Susan Rawl, PhD, RN, FAAHB, FAAN**

Susan Rawl, PhD, RN, FAAHB, FAAN, is the Doris J. Froebe Endowed Professor of Nursing at Indiana University, Co-Director of the *Advanced Training in Self-Management Interventions for Serious Chronic Conditions (T32)* program, and Co-leader of the Cancer Prevention and Control program at Indiana University Simon Comprehensive Cancer Center. Her research, funded by the National Cancer Institute, the National Institute for Nursing Research, the Patient Centered Outcomes Research Institute, and the American Cancer Society has focused on cancer screening, prevention, early detection as well as quality of life in cancer patients and people living with an ostomy. Rawl and her team develop and test the impact of computer-tailored, patient-centered interventions to increase cancer screening among people at increased risk, including minority populations, those with limited resources, and low literacy levels. She also collaborated on several studies testing nurse-led interventions to improve symptom management and quality of life for cancer patients undergoing treatment and their caregivers. Rawl is Chair-Elect for the Council for the Advancement of Nursing Science, a member of the Board of Directors for the Indiana Cancer Consortium, and Past President of the Midwest Nursing Research Society. She is a Fellow in the American Academy of Health Behaviors and the American Academy of Nursing.



## **DISTINGUISHED SERVICE AWARD**

### **Celia Wills, PhD, RN, FAAHB, FAAN**

**Celia E. Wills, PhD, RN, Associate Professor, Graduate Studies Chairperson, and College Secretary, The Ohio State University College of Nursing, Center on Healthy Aging, Self-Management**

**and Complex Care, has a multi-decade history of distinguished service to MNRS Celia E. Wills, PhD, RN, Associate Professor, Graduate Studies Chairperson, and College Secretary, The Ohio State University College of Nursing, Center on Healthy Aging, Self-Management and Complex Care, has a multi-decade history of distinguished service to MNRS starting in 1992. In addition to regular service as an abstract reviewer for MNRS annual conferences and multiple service roles such as on the MNRS Grants and local conference program planning committees, Dr. Wills has served in multiple MNRS leadership roles. Several key leadership service roles have included co-chairing/chairing the MNRS Decision Making Research section, moderating annual conference paper and poster sessions, co-chairing/chairing the overall annual conference program planning committee (2015 – 2017), and current service co-chairing/chairing the Grants Review committee (2018 – present). Dr. Wills's research and significant service leadership have been previously recognized via the MNRS Decision-Making Research Section Award for the Advancement of Nursing Science (2011) for senior level research contributions, MNRS Honor a Researcher Award (2015) in recognition of excellence in her program of research on decision-making, MNRS/WJNR Best Faculty Paper award (2015), and MNRS Service Award (2016) for Program Planning Committee Chair, in appreciation of leadership, dedication, and service. In addition to formal leadership contributions to MNRS, Dr. Wills has made a substantial impact on the professional career development of multiple generations of students at Michigan State University, Ohio State University, and elsewhere. She has mentored numerous students to present their work at MNRS and to engage in MNRS service/leadership opportunities for research and career development.**



## LIFETIME ACHIEVEMENT AWARD

**Mary Beth Happ, PhD, RN, FAAN, FGSA**



Dr. Mary Beth Happ is the Nursing Distinguished Professor of Critical Care Research and Associate Dean for Research and Innovation at The Ohio State University College of Nursing. Dr. Happ is a leading scholar in patient - provider communication and the use of augmentative and alternative communication in critical care settings. Dr. Happ has 24 years of federal (NIH) and private foundation funding to support research focused on improving care and communication for communication-impaired patients during hospitalization and at end-of-life. Her work addresses prolonged mechanical ventilation, symptom management, patient-family communication, and treatment decision-making. She led an interprofessional team in developing and testing the SPEACS and SPEACS-2 (online) communication training program and toolkit. The program aims to reduce or eliminate misinterpretation of patients' messages and to facilitate ICU liberation for mechanically ventilated patients. Her team most recently demonstrated acceptability and usability of the VidaTalk™ (Vidatak, LLC) patient communication application for critically ill adults. She is passionate about exemplary training for the next generation of nurse scientists. She currently co-leads a NIH/NINR-funded pre-doctoral research training program. An expert in qualitative and mixed-methods approaches, she collaborates with numerous research teams and serves on research review panels, including the NINR Initial Review Group. Scholarly recognitions include induction as a fellow in the American Academy of Nursing, the Gerontological Society of America, and in the Sigma Theta Tau International Researcher Hall of Fame. Dr. Happ serves on the editorial boards of *Geriatric Nursing*, *Heart and Lung* and the *Journal of Gerontological Nursing*. Her work is widely published with authorship of more than 195 journal articles, editorials, published abstracts and book chapters.

.

# **HARRIET H. WERLEY NEW INVESTIGATOR AWARD**



## **Shannon Halloway, PhD, RN**

**Dr. Halloway joined the College of Nursing in the Department of Community, Systems, and Mental Health Nursing as an assistant professor in 2018. She received her BSN from Pacific Lutheran University in 2010 and PhD from Rush University in 2016. Between 2016 and 2018, she completed the first Kellogg Postdoctoral Research Fellowship at Rush University College of Nursing.**

**Dr. Halloway is a nurse researcher with a commitment to improving cognition and health of older adults. Her research is informed by her diverse clinical experiences focused on the care of older adults across the healthcare spectrum. Dr. Halloway has a publication record focused on lifestyle physical activity interventions, and the impact of physical activity on cognition and brain health. Her work has resulted in several national awards, including the American Heart Association Cardiovascular Stroke Nursing Best Abstract and the Alzheimer's Association International Conference Best Postdoc Poster. In 2018, she was received a 40 Under 40 Award by the Illinois Nursing Foundation. Her work has been featured in wide-reaching news outlets, including *AARP Magazine*, *The Hill*, and *Scientific American*.**

**Dr. Halloway's research has been supported by 9 research grants as the principle investigator, including two grants funded by the National Institute of Nursing Research. Her current R01 trial tests multimodal biobehavioral interventions to delay memory loss in older women with cardiovascular disease.**





# LEADING THE CHANGE IN HEALTHCARE

## **Master of Science in Nursing (MSN)**

Family Nurse Practitioner

Forensic Nursing

Adult Gerontological Primary Care  
Nurse Practitioner

Adult Gerontological Acute Care  
Nurse Practitioner

Clinical Nurse Leader

## **Doctoral Programs**

Post-Master's Doctor of Nursing  
Practice (DNP)

Nurse Anesthesia Doctor of  
Nursing Practice (DNP-NA)

Ph.D. in Nursing



# START

## Groupsite

NETWORKING has  
never been this easy!

Be sure to accept your invite and set up your profile today:

<https://mnrs.groupsite.com/>



Building a **BRILLIANT** Community...  
With the **Gemstone Society**

All gifts to the Foundation support nursing research and MNRS.

Click Here  
to  
**DONATE  
NOW!**

Monthly giving options are now available.







# Cheers

for 45 years of Annual Research Conferences

Please join the MNRS Foundation in making an Anniversary Circle gift of \$45 or more to ensure 45 more years of nursing research conference.



**DONATE**  
**TODAY**

**At least MNRS  
makes  
professional  
development  
EASY...**



Check out the MNRS website for additional details.

[www.mnrs.org](http://www.mnrs.org)

**NEXT WEBINAR:**

**May 11, 2021**  
**11:30 AM Eastern**  
*MNRS Webinar: Being In Person When You Can't Be In Person*



# CONGRATULATIONS 2021 GRANT RECIPIENTS



## **MNRS SEED GRANT**

**Monica Wagner, PhD**

The University of Pittsburgh

*Pain Omics in the Context of Diminishing Levels of Estrogen*



## **MNRS FOUNDER'S CIRCLE DISSERTATION GRANT**

**Eakachai Kantawong, MNS, RN-BSN**

Michigan State University

*The Role of Alcohol-Embedded Social Media on Alcohol Drinking Norms, Intentions, and Onset Among Secondary School Students in Rural Thailand*



## **MNRS/CANS DISSERTATION GRANT**

**Youmin Cho, MSN, RN, AGPCNP-BC**

University of Michigan

*Technology for advanced cancer symptom science: exploring facilitators and barriers of using electronic patient-reported outcome (ePRO) data collection methods in oncology clinical trials*



# CONGRATULATIONS 2021 GRANT RECIPIENTS



## **MNRS JOSEPH & JEAN BUCKWALTER DISSERTATION GRANT**

**Jamie Morton, MSN**

University of Missouri, Columbia

*Exploring Perinatal Prescription Opioid Use and Misuse in Rural Settings*



## **MNRS/AURORA HEALTH DISSERTATION GRANT**

**Meghan Garland, CNM, APRN-C**

Rush University

*Determinants of Physical Activity and Lifestyle Physical Activity Behavior Among Pregnant Black Women*



## **MNRS/SIGMA RESEARCH GRANT**

**Wan-Chin Kuo, PhD**

University of Wisconsin - Madison

*Gender Differences in Behavioral and Cardiometabolic Responses under Financial Stress: A Longitudinal Analysis Using the Health and Retirement Study*

# College of Nursing

*Transform lives and discover  
exciting possibilities!*

## JOIN a dynamic team of faculty

Current openings:

- » Assistant Dean – Lincoln Campus
- » Associate Dean for Research
- » Nurse Practitioner Faculty (PhD or DNP)
- » Research Scientists

[unmc.peopleadmin.com](http://unmc.peopleadmin.com)

Contact: Lisa Muschall, [lmuschall@unmc.edu](mailto:lmuschall@unmc.edu)

## EXPLORE graduate student opportunities

[unmc.edu/nursing/educational-programs/  
graduate](http://unmc.edu/nursing/educational-programs/graduate)

Contact: Rolee Kelly, [rolee.kelly@unmc.edu](mailto:rolee.kelly@unmc.edu)

## ADVANCE DISCOVERIES

[unmc.edu/nursing/research/niedfelt-center](http://unmc.edu/nursing/research/niedfelt-center)

Contact: Robin Lally, [robin.lally@unmc.edu](mailto:robin.lally@unmc.edu)

Immerse yourself in the science of chronic illness self-management and interdisciplinary team science with a postdoctoral fellowship in the Center for Patient, Family, and Community Engagement in Chronic Care Management (CENTRIC) through discovery, dissemination and diffusion.

[unmc.edu/centric](http://unmc.edu/centric)

Contact: Robin Lally, [robin.lally@unmc.edu](mailto:robin.lally@unmc.edu)

## MAKE A DIFFERENCE through faculty practice

[unmc.edu/nursing/partnerships/  
morehead-center](http://unmc.edu/nursing/partnerships/morehead-center)

Contact: Amelia Stoltman, [amelia.stoltman@unmc.edu](mailto:amelia.stoltman@unmc.edu)

Learn more at [unmc.edu/nursing](http://unmc.edu/nursing)

f [facebook.com/UNMCCON](https://facebook.com/UNMCCON)

🐦 [twitter.com/UNMCCON](https://twitter.com/UNMCCON)



# CONGRATULATIONS TO THE 2021 RIG AWARD RECIPIENTS



## Acute & Critical-Care

### **DNP Project Award**

*Stacey M. Sears, MSN, RN, CPNP-AC*

### **New Investigator Award**

*Breanna Hetland, PhD, RN, CCRN-K*

*Anna Krupp PhD, MSHP, RN*

## Adolescent Health

### **Graduate Student Award**

*Emma C. Schlegel, MPA, BSN, RN*

### **Mid-Career Investigator Award**

*Luz G. Huntington-Moskos PhD, RN, CPN*

### **New Investigator Award**

*Janna D. Stephens PhD, RN*

## Decision Making

### **New Investigator Award**

*Kelly L. Wierenga PhD, RN, FAHA*

## Family Health

### **Early Career Investigator Award**

*Grant Pignatiello, PhD, RN*

### **Mid-Career Investigator Award**

*Andrea A. Cohee, PhD, RN*

## Gerontological Nursing Science

### **New Investigator Award**

*Karen O. Moss, PhD, RN, CNL*

### **PhD Dissertation Award**

*Jody S. Blankenship, PhD, RN*

## Health of Diverse Populations

### **Capstone Award**

*Katie E. Fee, DNP, APRN, FNP-C*

### **Dissertation Award**

*Julia Ann O'Brien, BSN, RN*

### **New Investigator Award**

*Jane R. von Gaudecker, PhD, RN, AGCNS, FAES*

### **Senior Investigator Award**

*Faye A. Gary, EdD, MS, RN, FAAN*

## Health Promoting Behaviors

### Across the Lifespan

### **New Investigator Award**

*Shannon Halloway, PhD, RN*

### **Senior Investigator Award**

*Mei-Wei Chang, PhD, RN, FAAN*

## Health Systems Policy & Informatics

### **Dissertation Award**

*Elizabeth Umberfield, PhD, RN*

### **Early Investigator Award**

*Clayton J. Shuman, PhD, MSN, RN*

### **Mid-Career Investigator Award**

*Andrew P. Reimer, PhD, RN, CFRN*

### **Senior Investigator Award**

*Gregory L Alexander PhD, RN, FAAN, FACMI,  
FIAHSI*

# CONGRATULATIONS TO THE 2021 RIG AWARD RECIPIENTS



## Nursing Education

### **Advancement of Science Award**

*Jennifer O'Rourke, PhD, APRN*

### **Early Investigator Award**

*Sherleena A. Buchman PhD, MSN, RN*

### **Outstanding Dissertation Award**

*Roxie L. Barnes, PhD, MSN, RN, CCRN-K,  
CHSE*

## Palliative End-of-Life Care

### **Dissertation Award**

*Siobhan Aaron PhD, MBA, MSN, RN*

### **Early Career Award**

*Susan E. Thrane, PhD, RN, CHPN, FPCN*

### **Graduate Student Award**

*Alaa Albashayreh, MSN, RN*

### **Mid-Career Investigator Award**

*Masako Mayahara, PhD, RN, CHPN, FPCN*

### **Outstanding Publication Award**

*Nai-Ching (Allison), Chi, PhD, RN*

## Pediatrics

### **Dissertation Award**

*Kim Hartley, PhD, MSN, RN*

### **Early Career Investigator Award**

*Susan E. Thrane, PhD, RN, CHPN, FPCN*

## Physiology Behavior Genomics & Society

### **Dissertation Award**

*Dilorom Sass, RN, Ph.D*

### **Early Career Investigator Award**

*Chen X. Chen, PhD, RN*

## Population Health

### **Distinguished Student Award**

*Karen Towne, MSN, RN, APHN-BC*

### **New/Early Investigator Award**

*Jane R. von Gaudecker, PhD, RN, AGCNS,  
FAES*

## Qualitative Methods

### **Graduate Research Award**

*Neethu Philips, PhD, MS, RN-BC, NPP  
Florine Ndakuya-Fitzgerald, PhD, RN*

## Research Thru Academic-Clinical Partnerships

### **Partnership Award**

*Case Western Reserve University  
CVS Minute Clinic*

# CONGRATULATIONS TO THE 2021 RIG AWARD RECIPIENTS



## Self Care

### **Mid-Career Investigator Award**

*Carolyn H. Still, PhD, RN, MSM,  
AGPCNP-BC, CCRP*

### **New Investigator Award**

*Stephanie Griggs, PhD, RN Symptom  
Science*

### **Dissertation Award**

*Adele Crouch PhD, RN  
Megan Miller, PhD, RN*

### **Distinguished Researcher Award**

*Diane Von Ah, PhD, RN, FAAN*

### **Mid-Career Investigator Award**

*Masako Mayahara, PhD, RN, FPCN, CHPN*

### **New Investigator Award**

*Chen X. Chen, PhD, RN*

### **Research Publication Award**

*Susan E. Thrane, PhD, RN, CHPN, FPCN*

## Women's Health and Childbearing

### **Distinguished Investigator Award**

*Teresa S. Johnson, PhD, RN*

### **Graduate Research Award**

*Alexandra L. Nowak, BSN, JD, RN*

### **New Investigator Award**

*Chen X. Chen, PhD, RN*

### **Undergraduate Research Award**

*Kaitlin Kretz*

## Emerging Scholars Network

### **Outstanding Liaison Award**

*Kay Bennett, MSN, RN*

## Engagement Committee

### **Membership Workgroup Outstanding Service Award**

*Brandy Pravecsek, DNP, RN, CNP, FNP*

### **Marketing Workgroup Outstanding Service Award**

*Frank Schaller, DNP*

### **RIG Workgroup Outstanding Service Award**

*Renee Kumpula, EdD, MAN, BA*





# Learn. Discover. Thrive.

At Rush University College of Nursing, our nurse researchers lead a range of multidisciplinary studies targeting the prevention and treatment of health problems at the bedside and in the community.

**\$4.2M in Research Funding in FY2020**

## Nationally Recognized Faculty

- 19 American Academy of Nursing Fellows
- 3 members of the International Nurse Researcher Hall of Fame

## Research Areas of Excellence

Parenting, Caregiving, Aging, Behavior Change, End of Life and Disabilities

**Top Ranked Programs** by *U.S. News and World Report*



## Join us.

Learn more about nursing research and programs at [Rushu.rush.edu/nursing](https://Rushu.rush.edu/nursing)



@RushUNursing

 **RUSH UNIVERSITY**  
COLLEGE OF NURSING



Earn your PhD  
the way you want

## NEW DELIVERY MODEL OFFERS GREATER FLEXIBILITY

Find the answers to the questions facing nursing and improve the health of patients and the community with a PhD in Nursing from the **University of Minnesota**. Our new **HyFlex** instruction format allows you the option to attend class in-person or remotely through video connection. Whether on campus or not, you'll be mentored by nationally-renowned faculty and provided research opportunities only a tier-one institution ranked in the top 10 can provide. Full-time students receive full funding for their first two years.

Learn more at [www.nursing.umn.edu/PhD](http://www.nursing.umn.edu/PhD)

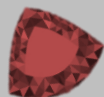


SCHOOL OF NURSING





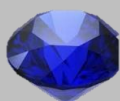
## Building a **BRILLIANT** Community... With **Annual Giving Gemstone Society**



### **Ruby Donors**

(Annual Gifts of \$2,500 - \$4,999)

Kitty Buckwalter



### **Sapphire Donors**

(Annual Gifts of \$1,000 - \$2,499)

Cindy Anderson  
Danielle Dohrmann  
Janet Larson  
Sally Lusk  
Barbara Polivka  
Juliann Sebastian  
JoEllen Wilbur



### **Topaz Donors**

(Annual Gifts of \$500 - \$999)

Lauren Aaronson  
Vicki Conn  
Joan Thoman  
Jean Wyman



### **Emerald Donors**

(Annual Gifts of \$250 - \$499)

Marge Bott  
Kelly Braniff  
Heather Hardin  
Marcelline Harris  
Janean Holden  
Bernadette Melnyk  
Sharon Tucker  
Kelly Wierenga



### **Pearl Donors**

(Gifts of \$100 - \$249)

Anonymous  
Mary Anthony  
Gordon Gillespie  
Madison Goodyle  
Carol Loveland-Cherry  
Ann Marie McCarthy  
Sonja Meiers  
Karen Monsen  
Audrey Nelson  
Marilyn Sommers  
Marietta Sperry  
Huey-Ming Tzeng  
Inga Zadvinskis

Annual Gifts up to \$99

Anonymous  
Nancy Artinian  
Donna Bliss  
Wilma Calvert  
Denise Cote-Arsenault  
Barbara Daly  
Ann Falkenberg Olson  
Marilyn Frenn  
Shannon Gillespie  
Claire Gregson  
Amy Hoffman  
Mary Hook  
Michelle Johnson  
Bincy Joshwa  
Dorothy Kent  
Helen Lach  
Rebecca Lehto  
Olimipia Paun  
Gabriela Perez  
Susan Rawl  
Anita Reger  
Carol Rogers  
Diane Schadewald  
Debra Schutte  
Yulia Semeniuk  
Susan Solmos  
Vorachai  
Sribanditmongkol  
Kathryn Swartwout  
April Vallerand  
Joachim Voss  
Karen Wambach  
Deidre Wipke-Tevis  
Jennifer Zherebnenko





# Building a **BRILLIANT** Community... With **Annual Giving Gemstone Society**



Building a  
BRILLIANT Community...  
Through the Past Presidents

Lauren Aaronson  
Diana Biordi  
Kitty Buckwalter  
Janean Holden  
Janet Larson  
Sally Lusk  
Susan Rawl  
Marilyn Sommers  
Jean Wyman

Anonymous  
Nancy Artinian  
Marge Bott  
Vicki Conn  
Carol Loveland-Cherry  
Kelly Wierenga



Building a BRILLIANT  
Community...Through the  
Past Trustees & Directors



Building a  
BRILLIANT Community...  
Through Past Grant Recipients

Anonymous  
Shannon Gillespie  
Karen Monsen  
Debra Schutte  
Huey-Ming Tzeng



## Anniversary Circle

Kathleen Buckwalter	Michelle Johnson	Diane Schadewald
Vicki Conn	Bincy Joshway	Debra Schutte
Ann Falkenberg Olson	Helen Lach	Kathryn Swartwout
Marilyn Frenn	Janet Larson	April Vallerand
Shannon Gillespie	Rebecca Lehto	Joachim Voss
Claire Gregson	Ann Marie McCarthy	JoEllen Wilbur
Amy Hoffman	Olimpia Paun	Deidre Wipke-Tevis
May Hook	Susan Rawl	Jean Wyman
	Carol Rogers	Inga Zadvinski



## Champagne Reception

Cindy Anderson	Marilyn Frenn	Robin Newhouse
Julie Anderson	Mary Beth Happ	Laurel Northouse
Mary Anthony	Patricia Hershberger	Juliann Sebastian
Lisa Brodersen	Amy Hoffman	Elizabeth Swanson
Kathleen Buckwalter	Barbara Holtzclaw	Sharon Tucker
Eileen Collins	Christine Kennedy	Diane Von Ah
	Janet Larson	Joachim Voss
	Masako Mayahara	JoEllen Wilbur
	Ann Marie McCarthy	Jean Wyman

# Save the Date

March 30 – April 2

# 2022

## 46<sup>th</sup> ANNUAL RESEARCH CONFERENCE

Renaissance Schaumburg Convention  
Center Hotel  
Schaumburg, IL



Many  
thanks to  
the Host  
Schools:



UNIVERSITY OF  
**ILLINOIS CHICAGO**

College of Nursing



RUSH UNIVERSITY  
COLLEGE OF NURSING



MARCELLA  
**NIEHOFF**  
SCHOOL of NURSING



# College of Allied Health and Nursing, School of Nursing

*An intellectual community of scholars  
focused on education, practice, and research  
to improve family and societal health.*

**World-class educators and programs** including traditional pre-licensure baccalaureate, online baccalaureate completion program, doctor of nursing practice, and primary care family nurse practitioner.

- <https://ahn.mnsu.edu/academic-programs/nursing/>
- Fellowship funding Opportunities  
<https://ahn.mnsu.edu/departments/school-of-nursing/glen-taylor-nursing-institute/education/becky-taylor-fellowship/>

## State of the Art Nursing Simulation Center

- 16,000 square-foot Nursing Simulation Center
- 7 simulation rooms including OB, Pediatrics, Family Suite, Surgical Suite
- <https://ahn.mnsu.edu/departments/school-of-nursing/maverick-family-nursing-simulation-center/see-our-space/>

## Home of Glen Taylor Nursing Institute for Family and Society

<https://ahn.mnsu.edu/departments/school-of-nursing/glen-taylor-nursing-institute/>

**Currently hiring director/professor**

<https://minnesotastate.peopleadmin.com>



## Nurse-led School-based Health Center for faculty practice and student experiential education

<https://ahn.mnsu.edu/departments/school-of-nursing/health-commons-at-pond/>

## New initiatives in

- Equity and Inclusion
- Interdisciplinary Projects in Education and Research
- Immersive International Student Experiences



**MINNESOTA STATE**

Minnesota State University, Mankato  
A member of Minnesota State

**Pushing  
boundaries to  
dream, discover  
and deliver a  
healthier world**



**Leaders in discovering ways to reduce health disparities**

18 grant-funded researchers with active work addressing social determinants of health and systemic racism

[go.osu.edu/transformationsfall2020](https://go.osu.edu/transformationsfall2020)

**Leaders in research across the lifespan**

\$13 million in external research funding (FY2020)

[go.osu.edu/2020conresearchfunding](https://go.osu.edu/2020conresearchfunding)

**Leaders in evidence-based practice and  
promoting clinician well-being**

Legislative call to action with Fuld National Institute for EBP and Health Policy Institute of Ohio

[go.osu.edu/hpiocalltoaction](https://go.osu.edu/hpiocalltoaction)

**Join the movement we are creating:**

[go.osu.edu/mnrs2021](https://go.osu.edu/mnrs2021)



**THE OHIO STATE  
UNIVERSITY**

COLLEGE OF NURSING



**Marquette University College of Nursing**

**ENERGIZED BY  
TEACHING**

**FOCUSED ON  
RESEARCH**

**DRIVEN TO SERVICE  
WITH DIVERSE,  
VULNERABLE  
POPULATIONS**

**Now hiring tenure-track nursing faculty  
for the following positions:**

**Assistant Professor | Associate Professor | Full Professor**

*Preference will be given to candidates who work with underrepresented groups/address health inequities.*

**[marquette.edu/prospective-faculty](https://marquette.edu/prospective-faculty)**



**MARQUETTE**  
UNIVERSITY

**BE THE  
DIFFERENCE.**