

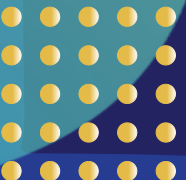
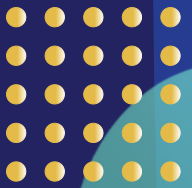


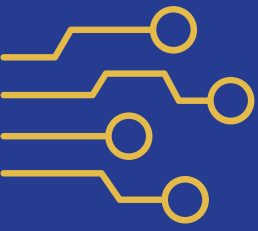
**CMSA™**  
Case Management  
Society of America

**2022**  
**ANNUAL**  
**CONFERENCE**  
**ORLANDO, FL**

**FORGING A PATH TO THE  
FUTURE OF CASE MANAGEMENT**

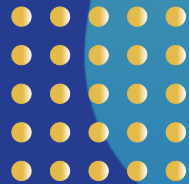
**DIGITAL  
COMPONENT  
BROCHURE**





# As a digital attendee you will have access to:

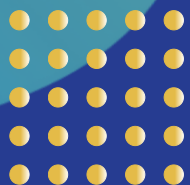
- Over 50 CEs
- 3 Recorded Keynote Sessions
- Recorded CMSA Annual Meeting
- 4 Recorded Symposia
- 9 Prerecorded Digital Sessions
- 34 Recordings of All In-person Education Sessions



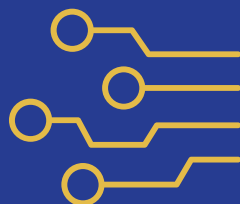
**Learn and Earn through August 31st!**

**CMSA 2022 ANNUAL CONFERENCE  
DIGITAL COMPONENT**

**\$625**



[CLICK TO REGISTER](#)



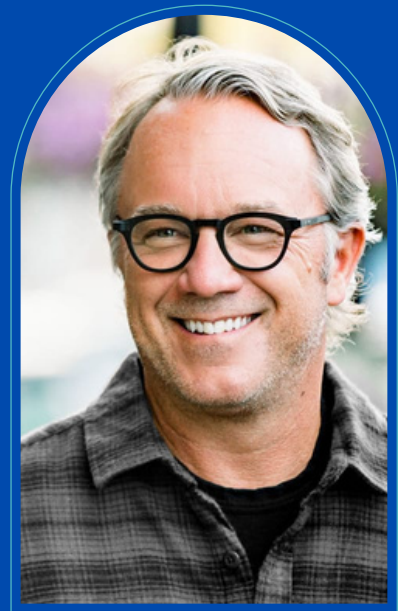
# 2022 KEYNOTE PRESENTERS



**LYNDA CHIN,  
MD**



**GERRI LAMB,  
PHD, RN, FAAN**



**LONNIE  
MAYNE**



## **KEYNOTE: LYNDA CHIN, MD**

### ***HOW THE PANDEMIC REINFORCES THE VALUE OF PATIENT-CENTRIC APPROACH***


An elected member of the National Academy of Medicine, Dr. Chin is a renowned cancer genomic scientist and a leader in the application of analytical technologies, AI/ML, and big data in medicine. Her groundbreaking work synthesizing terabyte-scale datasets in genomics and oncology research has opened new frontiers in digital medicine. Dr. Chin is the President and CEO of Apricity Health, a next-generation precision oncology company she co-founded, with a mission to leverage digital technologies to bring novel therapies and better care to more patients, and harness real-world patient data to drive better cancer drug discovery.

## **KEYNOTE: GERRI LAMB, PHD, RN, FAAN**

### ***NEVER MORE IMPORTANT: WHAT CASE MANAGERS MEAN TO PATIENTS AND HEALTH CARE***

Gerri Lamb is a professor in the College of Nursing and Health Innovation. Her research interests include nursing care delivery systems and patient outcomes with a focus on nurse care coordination within and across settings, and interprofessional practice to improve healthcare environments.

Professor Lamb came to ASU in 2008 from an endowed chair position at Emory University to guide the development of a robust program for interprofessional practice and education. Working with a cross-disciplinary team, she helped create the Center for Advancing Interprofessional Practice, Education and Research (CAIPER). The center resulted from six years of competitive grants from the Josiah Macy Jr. Foundations and innovative collaboration with the Herberger Institute at ASU. Center members work with faculty and students across multiple professions to assist them to build teamwork and collaboration knowledge and expertise to provide person-centered, high-quality healthcare. Widely recognized as a leading expert on care coordination practice and measurement, Professor Lamb has influenced the development of community-based care coordination and national frameworks for measuring the process and outcomes of care coordination.



## KEYNOTE: LONNIE MAYNE

### *THE ART OF THE POSSIBLE*

When I was just a kid, I remember hearing the cheers for my pro-wrestling dad rise from the stands. But every time he stepped out of the ring, he'd shake off his Moondog Mayne persona to connect with his fans on a human level. That has always stuck with me.

After he passed away, I spent my summers traveling with my uncle who was a CEO "turnaround guy" and my personal business mentor. I sat in meetings with him and watched him get the best out of others by treating them like people first and employees or customers second.

Over the last few decades, I've been a technology executive and before that an executive navigating mergers and acquisitions. During the most challenging times, I have often asked myself: "How can I turn this noise down and develop the full potential of our people and our organization?"

I knew there had to be a more respectful way to have tough conversations, handle company changes, and build team trust and resilience. A more inspired way to get others showing up every day, feeling excited to get to work. A more personalized way to serve our customers and stand out from our competitors...

And I also knew where these changes would have to start: Not with the company, but with the leaders building and inspiring our company culture.

To answer all these tough questions, I created a simple, life-changing, and value-driven performance model. It's called Red Shoes Living.

# CONCURRENT SESSIONS BY TRACK

## Acute Care

Intermediate

**Medical Necessity - A Team Effort - The Case Manager, the Physician, and the Physician Advisor**

*Speakers: Ronald Hirsch, Erica Remer*

Intermediate

**Nerve Decompression for Peripheral Neuropathy**

*Speaker: Michael Rose*

Intermediate

**Enhancing Hospital Capacity through System Care Coordination**

*Speaker: Lorelei Stellwag*

Novice

**Certification & Association Membership ~ What's in it for Me?**

*Speaker: Sue Brown*

Intermediate

**Liver Transplants: Increased Need for Transplants due to COVID-19**

*Speakers: Janet Coulter, MaryAnn Ott*

Intermediate

**Hospital Readmission Reduction Program (HRRP) Revisited: Outcomes, Risks & Benefits**

*Speaker: Colleen Morley*

## Long-Term Care

Intermediate

**What's Next? Transitions to Adulthood for Medically Complex Youth**

*Speakers: Celinda Carr, Evelyn Klaiss*

Intermediate

**Collaborative Care Teams & Telehealth Tools: The Future is Now!**

*Speakers: Amelia Wiffin, Barbara Robbins*

Intermediate

**COVID-19: When the Patient is a Nurse Case Manager**

*Speaker: Wanda Ali*

Novice

**Case Management, Then, Now & Future**

*Speaker: Colleen Morley*

Advanced

**The Good, the Bad and the Ugly: Managing Change in a Pandemic**

*Speakers: Sarah Cukale-Matos, Karissa Maddox*

Advanced

**The Effect of Medication on Elderly Clients: Optimizing Quality of Life while Avoiding Adverse Effects**

*Speaker: Michael Newell*



# Ambulatory Care

Novice

**The Dysfunctional Family: Providing Care in the midst of Drama**

*Speaker: Jennifer Axelson*

Advanced

**Medication Stewardship: A Prescription for Change**

*Speaker: Donna Walsh*

Advanced

**Trauma Informed Leadership: Organizational and Ethical Mandate**

*Speaker: Ellen Fink-Samnack*

Intermediate

**After the Pandemic: The Emerging Public Health Crisis of Opioid Overdoses**

*Speakers: Sheilah McGlone, Charles Boardman*

Intermediate

**Best Practices in Healthcare: Assessment of Social Determinants of Health (SDOH) Using the Department of Veterans Affairs (VA) Social Work Practice Model**

*Speakers: Angela Giles, Jennifer Silva*

Intermediate

**Diabetes Technology Update: Devices, Engagement & Collaboration**

*Speakers: Kristine Erdman, Mary Ellen Young*

# Payer

Advanced

**How We are Building Our Core, to Build Our Future**

*Speakers: Shannon Coldwell, Marshall Perry*

Intermediate

**Advancing Interprofessional Team Leadership Expertise: Professional Case Management's Ethical Imperative**

*Speaker: Ellen Fink-Samnack*

Advanced

**Innovations and Elevations in Care Management Learning and Development**

*Speakers: Nikki Wenck, Amy Friedman*

Advanced

**Breaking down System Silos: A Pathway for Integrated Care**

*Speakers: Dorothy Sanders, Jennifer Perez*

Advanced

**Case Management Program Evaluation: Informing Value and Practice**

*Speakers: Alison Glendenning, Sakshi Sharma*

Advanced

**The Transformation of Case Management Department: Improving Staff Satisfaction, Efficiency, and Communication**

*Speakers: Carmen Castillo*



# Workers' Compensation

<p><b>Intermediate</b></p> <p><b>COVID-19 and Case Management: The Evolution of Care</b>  <i>Speaker: Eunhee Kim</i></p>	<p><b>Novice</b></p> <p><b>This is Going to Cost Me an Arm and a Leg</b>  <i>Speaker: Jennifer McCarthy</i></p> <p><b>Intermediate</b></p> <p><b>Emerging Trend: Long-COVID as Disability and SSDI for Patients</b>  <i>Speakers: Terry Geist</i></p>	<p><b>Novice</b></p> <p><b>A Shift in Focus: From Home Modifications to Home Accessibility</b>  <i>Speaker: Linda Colsen</i></p> <p><b>Intermediate</b></p> <p><b>Understanding Transitional Pain Services</b>  <i>Speaker: Jason Petrishin</i></p>
--	---	---

## Session Levels

*Presenters have identified the level representing their course content.*

### Novice

New to case management practice, care coordination, and transition management culture, students or health care professionals not familiar with case management as a sub-specialty. The content is considered introductory and would advance the skills and knowledge of the novice.

### Intermediate

Content applies to those with some case management practice experience and familiar with the culture. The individual may not yet be certified, and content would advance the skills and knowledge of the intermediate-skilled case manager.

### Advanced

Content applies to those who are very familiar with case management practice and culture. The individual may be in a leadership position or is seeking leadership skills. The individual may hold certification, be active in, or is interested in research and process improvement.







# FORGING A PATH TO THE FUTURE OF CASE MANAGEMENT

*One Year at a Time*

Watch the CMSA Annual Meeting and celebrate CMSA's year of accomplishments and learn about what's ahead!



## 2022 CORPORATE PARTNERS

### DIAMOND



Microbiome Therapeutics Development



### PLATINUM



### GOLD



### SILVER



As of April 15, 2022

### BRONZE



*Thank you for your support!*