

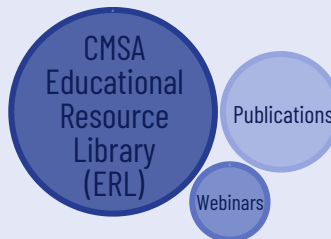


EXCLUSIVE RESOURCES

- + FREE Downloads Including the *2022 Standards of Practice for Case Management*
- + FREE Monthly Webinars
- + FREE Access to 3 Professional Publications
- + **150+ FREE CE Courses** Available 24/7 in the **CMSA Educational Resource Library** (Pre-approved RN, SW, CCM, CCM Ethics and more!)

EDUCATION

is the cornerstone of CMSA Membership



With all the **FREE** CEs available, the cost of CMSA membership translates to less than \$1 per CE

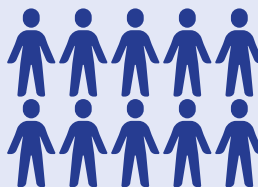


NETWORKING OPPORTUNITIES

- + FREE Access to our exclusive CMSA Member Directory
- + FREE Access to most Local Chapter Events
- + FREE Access to the CMSA Career Center (+ Premium Discounts)
- + Connect with Case Managers from Every Practice Setting

CREDIBILITY

CMSA is the oldest and largest CM association



Joining CMSA shows that you are committed to the practice of case management and are dedicated to continuous growth and learning.



CAREER ADVANCEMENT

- + Exclusive Access to Public Policy Advocacy through CMSA Hill Visits
- + Substantial Discounts on **CMSA Annual Conferences** and Advanced Trainings like ICM
- + Leadership Opportunities on Local and National Levels
- + Opportunities to Have Your Work Published in *CMSA Publications*

JOIN TODAY!



Join our diverse community of case managers from across the continuum of care in every practice setting, where you will find support from peers, industry leaders, and a dedicated staff on your path to career advancement.



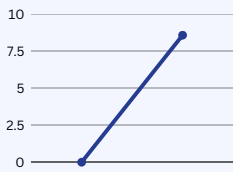
NETWORKING & COLLABORATION

- + Gain an instant support system of like-minded peers
- + Connect to the case management community on a local, national and even global level
- + Build bridges to healthcare team members
- + Integrate interprofessional expertise into patient care



of people agree that networking plays a vital role in their career progression

-LinkedIn



8.6%

U.S. workers gained an additional 8.6% in annual income, or an average of \$8,000, after participating in upskilling / professional development

-Gallup

EDUCATION & PROFESSIONAL DEVELOPMENT

- + Access certification and licensure support
- + Stay ahead of healthcare trends
- + Sharpen your practice skills
- + Improve patient outcomes
- + Advance your career



Stay motivated & inspired!

CREDIBILITY

89%

of professional association members say standard-setting is very or extremely important for the future of their field.

-ASAE

CMSA IS RECOGNIZED AS THE STANDARD-SETTER FOR CASE MANAGEMENT

CMSA National Individual Membership Rate is \$170 + Local Chapter Dues

Company, International, Student, Retired, and Military/VA/DoD Rates also available! Learn more at cmsa.org

JOIN TODAY!

